

## PANELS, HARNESES AND CIRCUIT BREAKER PART NUMBERS

PANELS: IM673LD3 - IM844LW3	
S-1 (12 Volt)	22-92110
S-1 (24 Volt)	22-92115
S-1B (12 Volt)	22-92120
S-1B (24 Volt)	22-92125
S-3C (12 Volt)	22-91211
S-3C (24 Volt)	22-91212
S-3B (12 Volt)	22-91201
S-3B (24 Volt)	22-91202

PANELS: IM86AW3 - IM9843	
S-1 (12 Volt)	22-92110
S-1 (24 Volt)	22-92115
S-1B (12 Volt)	22-92120
S-1B (24 Volt)	22-92125
S-3C (12 Volt)	22-98706
S-3C (24 Volt)	22-98707
S-3B (12 Volt)	22-98701
S-3B (24 Volt)	22-98702

HARNESES	
10 ft.	22-40928
20 ft.	22-40930
40 ft.	22-40931
70 ft.	22-40970
100 ft.	22-40400
"Y" Harness	22-40932

CIRCUIT BREAKERS	
30 amp single phase 120/240 VAC	22-70230
40 amp single phase 120/240 VAC	22-70240
50 amp single phase 120/240 VAC	22-70250
60 amp single phase 120/240 VAC	22-70260
70 amp single phase 120/240 VAC	22-70270
80 amp single phase 120/240 VAC	22-70280
100 amp single phase 120/240 VAC	22-70300
*150 amp single phase 120/240 VAC	22-70350
100 amp three phase 120/208 VAC	22-73300
*125 amp three phase 120/208 VAC	22-70325

## NORTHERN LIGHTS PANELS

Choose the amount of control you need, and the flexibility you want. Northern Lights offers several control panels for models up to 30kW, each available in 12 or 24 volt. These handsome panels allow you to monitor and control your generator from one or several locations on board. Custom panels available.



Length - 3.38" x Height - 2.88"



Length - 5.5" x Height - 2.88"

### S-1 Panel

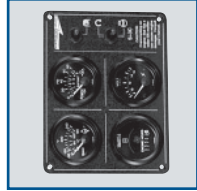
Panel Includes: Run light, start/stop and shutdown bypass/preheat switch.

### S-1B Panel

Panel Includes: Run light, engine hourmeter, start/stop, and shutdown bypass/preheat switch.



Length - 10" x Height - 8" x Depth - 4"



Length - 7" x Height - 5.25"

### S-3B Panel

Panel Includes: DC voltmeter, water temperature gauge, oil pressure gauge, engine hourmeter, start/stop, and shutdown bypass/preheat switch. Includes a NEMA enclosure.

### S-3C Panel

Panel Includes: DC voltmeter, water temperature gauge, oil pressure gauge, engine hourmeter, start/stop, and shutdown bypass/preheat switch. Available with enclosure.



Length - 14" x Height - 17" x Depth - 6.25"

### S-4 Panel

Panel includes: Engine temperature gauge, oil pressure gauge, DC and AC voltmeters, AC frequency meter, AC ammeter and switch with harness, start/stop switch, shutdown bypass/preheat switch. Available as flush mount or with enclosure.



### Extension Harness

From 10 to 100 feet, these harnesses are sturdy yet flexible and give today's boaters the convenience they need. Mount your panels throughout the vessel.



### Circuit Breakers

Protects wiring, electronics, and other equipment onboard. These circuit breakers give you the peace of mind of added safety.



### "Y" Harness

Allows you to install multiple control panels from one plug-in.

## ACCESSORIES For Marine Generators



### MAKING THE BEST EVEN BETTER

Northern Lights offers the most complete line of accessories in the industry. From high output battery charging alternators to exhaust gas / water separators, Northern Lights' comprehensive list of options and decades of experience with custom configurations is unmatched.

Add a sound attenuating enclosure for the ultimate in quiet power or a PTO to run your bow thruster. 12 or 24-volt, single or three phase, wet or dry exhaust, heat exchanged or keel cooled. Northern Lights offers it! A panel in the galley, stateroom and wheelhouse? No problem!

Let Northern Lights build a generator to your specifications at the factory. You'll save time and money by avoiding expensive modifications in the field. Northern Lights builds generators with options to comply with a variety of classification societies such as Lloyd's, ABS, DNV, and RINA.

This accessory brochure lists many of our more popular options. To learn more about these options and others not listed, simply contact your Northern Lights' dealer or call the factory. With Northern Lights, you get the features you want.

## NORTHERN LIGHTS ACCESSORIES



### Sound Enclosures

The highest performing enclosures in the industry, Northern Lights sound shields are designed and tested to attenuate up to 20 dBA. Trigger latch panels open to single-side serviceability and their white, powder-coated finish is as durable as it is elegant.



### Primary Fuel Filters

Extend your generator's life by removing contaminants in the fuel. These fuel filters are designed to protect the engine from damaging particles and water, thereby enhancing performance, and increasing reliability.



### PTO'S

Available on models 12kW and up, the front power take-off gives you up to 48 Hp, dependent on model size and RPM. Run accessories like hydraulic thrusters, windlass or sail equipment at the flip of the switch with this powerful option.



### Electric Fuel Pump

Adds design flexibility by allowing the fuel tank and generator to be installed further apart. Also allows easier fuel system bleeding.



### Water Lift Muffler

Cools hot exhaust gasses and silences exhaust noise. The standard model is listed, and a variety of other styles and configurations are also available. Contact your Northern Lights dealer for the solution that is right for your vessel.



### Safety Switches

Protect your generator set with an array of safety switches. Choose options like overspeed, low coolant level or low oil level to monitor and diagnose your generator set's vital functions.



### Gas / Water Separator

Reduce the exhaust noise associated with splashing, with a Gas/Water Separator. Exhaust gas is separated from the water and diverted off the transom, while the water is allowed to exit under the hull.



### High Output Alternator

Increase your battery charging capabilities with a high output alternator. An adjustable voltage regulator for use with either lead acid or gell cell batteries is optional. Available on M753W3 and larger models.



### Dry Exhaust Flex

Connects the exhaust system to the engine and reduces vibration transmission through the dry exhaust. Also allows for remote mounting of the muffler and compensates for the thermal expansion of the exhaust system.



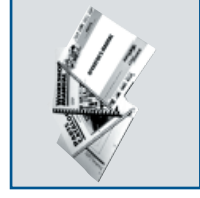
### Spare Parts Kits

Belts, gaskets, o-rings, pumps, and much more – be prepared and organized for routine maintenance and troubleshooting in tough marine environments. Standard Kit contains and organizes basic repair parts, and the World Class Kit outfits you for longer voyages.



### Siphon Break

Prevents raw water from siphoning back into the engine. Standard on 5 & 6 kW, optional on 8-33 kW models. Intended for use with wet exhaust systems only.



### Manuals

Make simple repairs and perform routine maintenance quickly and with confidence. Operator's manuals include photographs and easy-to-read directions. Parts manuals offer exploded-view pictures of components and parts numbers. Paper manuals come standard; CDs available on request.

## PART NUMBERS

	M673LD3	M673L3	M773W3	M843NW3	M844W3	M864W3	M894W3
<b>KW RATINGS</b>							
60 Hz/50 Hz	5 / 4.5	6 / 5	9 / 7	12 / 10	16 / 12	25 / 20	30 / 26
<b>SOUND ENCLOSURES</b>							
Northern Lights Sound Enclosures	05-78000	05-78000	05-78600	05-73100	05-70000	05-78705	05-71200
<b>POWER TAKE OFF (PTO)</b>							
PTO w/ electric clutch 12 Volt	n/a	n/a	n/a	34-63100	34-68100	34-68700	34-61200
PTO w/ electric clutch 24 Volt	n/a	n/a	n/a	34-63105	34-68105	34-65410	34-61205
<b>EXHAUST SYSTEMS</b>							
Water Lift Type Muffler	00-38300	00-38300	00-32000	00-32000	00-32000	00-35400	00-35400
Gas/Water Separator	00-32006	00-32006	00-32007	00-32007	00-32007	00-35406	00-35406
Dry Exh. - Critical Residential	27-31232	27-31232	27-31213	27-31213	27-31213	27-31214	27-31214
Dry Exhaust Flex	27-38302	27-38302	27-31904	27-31904	27-31904	27-30010	27-30010
Siphon Break	Standard	Standard	27-18301	27-18301	27-18301	27-18301	
<b>FUEL SYSTEMS</b>							
Standard Fuel Filter	24-52020	24-52020	24-52020	24-52020	24-52020	24-52020	24-52020
High Capacity Fuel Filter	24-51000	24-51000	24-51000	24-51000	24-51000	24-51000	24-51000
High Capacity Metal Bowl Filter	24-50004	24-50004	24-50004	24-50004	24-50004	24-50004	24-50004
Electric Fuel Pump 12 Volt	26-71003	26-71003	26-71003	26-71003	26-71003	26-71003	26-71003
<b>DC ELECTRICAL SYSTEMS</b>							
12 Volt Isolated Ground	22-78300	22-78300	22-78601	22-73100	22-78100	22-78701	22-71201
24 Volt Isolated Ground	n/a	n/a	22-78611	22-43150	22-78120	22-78711	22-71211
24 Volt Standard Ground	n/a	n/a	22-78606	22-43140	22-78110	22-78400	22-71206
<b>SAFETY SWITCHES</b>							
Overspeed Switch	n/a	n/a	22-72010	22-72010	22-72010	22-70061	22-70061
Low Water Level	n/a	n/a	n/a	37-12005	n/a	37-75420	37-75420
Low Oil Level	n/a	n/a	n/a	37-72000	37-72000	37-78700	37-75400
<b>12 VOLT ALTERNATORS</b>							
High Output w/ Adj. Regulator	n/a	n/a	22-78230	22-72015	22-72015	22-78715	22-71215
<b>SPARE PARTS KITS</b>							
Standard - Heat Exchanger	n/a	38-08011	38-08600	38-03120	38-08120	38-08700	38-01200
World Class - Heat Exchanger	n/a	38-08009	38-08602	38-03125	38-08125	38-08702	38-01201
Standard - Keel Cooling	n/a	38-08012	38-08601	38-03130	38-08130	38-08701	38-01202
World Class - Keel Cooling	n/a	38-08010	38-08603	38-03135	38-08135	38-08703	38-01203
<b>OIL FILTER</b>							
Northern Lights Oil Filter	24-08001	24-08001	24-02001	24-03100	24-03100	24-08701	24-01201
<b>MANUALS<sup>A</sup></b>							
Operator's Manual	OM673	OM673L2	OM773LW2	OM843NW2	OM844W2	OM864W	OM894W
Parts Manual	P673	P673-2	P773-2	P843-2	P844-2	P864-2	P944
Workshop Manual	W673	W673L	W773L	W843	W844	W864	W944

<sup>A</sup> All of the above manuals are also available on CD-Rom, upon request. nc: Non current production model. Parts still available.

## WARRANTY & SUPPORT

Northern Lights generators, including parts and accessories, are backed by an unmatched, transferable global warranty. Northern Lights' worldwide dealer network is more than 300 strong, and Northern Lights' helpful dealers offer parts, accessories, and service in more than 40 countries. Visit our web site at [www.northern-lights.com](http://www.northern-lights.com) to locate the dealer nearest you.

