

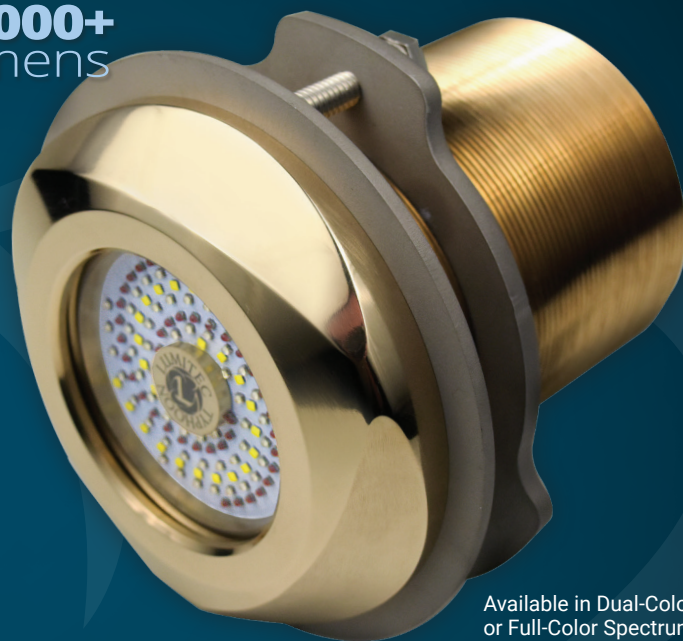
NEW FOR
2019

SEABLAZE TYPHOON

SeaBlaze Typhoon Through-Hull Underwater Light

10,000+
Lumens

Brighter, more advanced, more features. The evolution continues. New for 2019 Lumitec answers the call of our customers and introduces Typhoon Through-Hull Underwater Light. Typhoon sets a new standard for performance, reliability, and value in through-hull underwater lights. Typhoon delivers more than 10,000 measured lumens (white), and a modular quick-change design for easy in-water service and upgrades. Our innovative internal relay simplifies wiring and significantly reduces installation costs and complexity. Solid bronze housing requires a 3" mounting hole. Full-color control using any standard on/off switch, or use Lumitec's "Poco" Digital Lighting Control Module, sold separately, for even more advanced features.



Available in Dual-Color
or Full-Color Spectrum

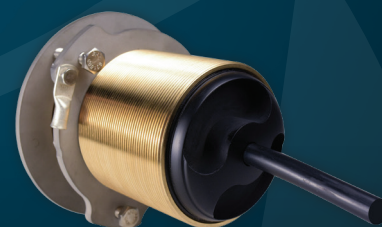
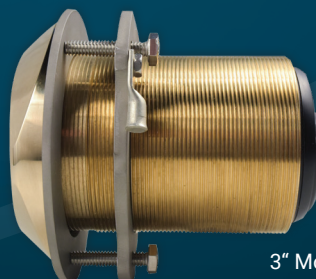
SeaBlaze Typhoon Through-Hull Underwater Light

Output:	Dual-Color (White/Blue) Full-Color Spectrum
Lumens:	10,000+
Voltage:	10-30vDC
12vDC Amps:	10A
24vDC Amps:	4.5A
CCT:	6500K
CRI:	70+



PLI Enabled,
Poco Compatible.

SPECTRUM
COLOR



3" Mounting hole,
accommodates up
to 3" hull thickness



Superior Design

Typhoon will accommodate any hull thickness up to 3" and only requires a 3" through-hull mounting hole. The jam nut locking ring system allows the light to be installed on angled hulls and a tool-free end-cap design makes accessing the light for in-water service and upgrades easy and convenient.