



Johnson Outdoors Marine Electronics, Inc  
121 Power Drive • Mankato, MN 56001  
cannondo@wtggers.com



**CANNON**  
TECHNICAL SUPPORT  
P.O. Box 8129  
Mankato, MN 56002  
121 Power Drive  
Mankato, MN 56001  
Phone (800) 227-6433  
Fax (800) 527-4464

**DEALER &  
DISTRIBUTOR SERVICE**  
555 Main Street, Suite 241  
Racine, WI 53403  
Phone (800) 493-6686  
Fax (800) 451-0387  
Fax (262) 631-6609

**JOHNSON OUTDOORS INC.  
CANADA**  
4180 Harvester Road  
Burlington, Ontario L7L 6B6  
Phone (905) 634-0023  
Fax (905) 634-0261



Cannon Cover, Digi-Troll, Easy-Troll, Flash Weights, Lake-Troll, Magnum 10, Mini-Mag, Mini-Troll, One-Beat Network, Optimum, Quick Release, Quick Stealer, Retro-Ease, Sport-Troll, Terminator Kit and Uni-Troll are trademarks of Johnson Outdoors Marine Electronics, Inc.

Cannon, Humminbird and Minn Kota are registered trademarks of Johnson Outdoors Marine Electronics, Inc. Fish Hawk is a trademark of Fish Hawk Electronics. Vclero is a registered trademark of Vclero Industries B.V. Specifications are subject to change without notice.

©2020 Johnson Outdoors Marine Electronics, Inc. All Rights Reserved. Printed in the U.S.A.







## SEE ALL. KNOW ALL. CATCH ALL.

View critical up-to-the-second trolling data, control your weights and more, from anywhere on your boat. With Optimum's full-color LCD display, your Humminbird® fish finder, or even your mobile device, you're always in the know and always in control.



LEARN MORE ABOUT THE SMART, CONNECTED OPTIMUM DOWNRIGGER ON PAGES 10-13.

## CONTENTS

Trolling 101.....	4-5
Cannon Technology.....	6-7
Buying Guide.....	8-9
Optimum <b>NEW</b> .....	10-13
Magnum.....	14-15
Uni-Troll.....	16-17
Manual Downriggers.....	18-19
Rigging Guide.....	20-29
Power and Boat Setup.....	20-21
Rod Holders and Track Systems.....	22-23
Downrigger Setup.....	24-25
Mounts, Bases and Line Releases.....	26-27
Accessories.....	28-29
Product Chart.....	30-31



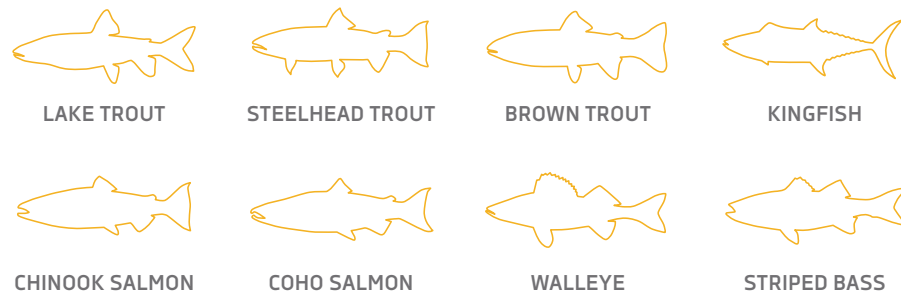
# TROLLING 101

## AN IN-DEPTH LOOK AT CONTROLLED DEPTH FISHING

So why do so many successful anglers use downriggers? There are times when success requires putting your bait at a specific depth and keeping it there, to match fish movements and feeding patterns. Cannon® makes doing that incredibly easy, so you spend more time fishing, and putting more fish on the deck.

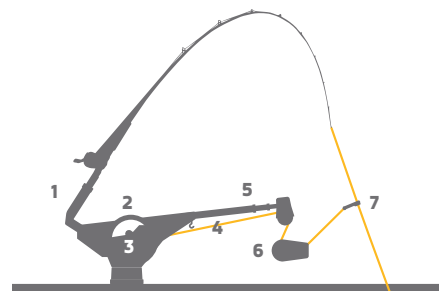
### LET'S TALK FISH

Downriggers are designed for trolling, and they can be used to catch a huge variety of freshwater and saltwater fish. Some of the most popular species to catch include these listed here.



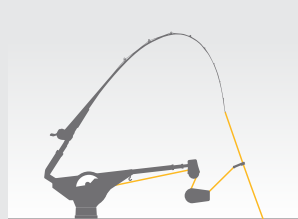
### DOWNRIGGER ANATOMY

Downriggers can be amazingly simple, like our Lake-Troll™, or extremely sophisticated pieces of fishing equipment, like the Optimum™. Yet all of them have a few key elements in common.

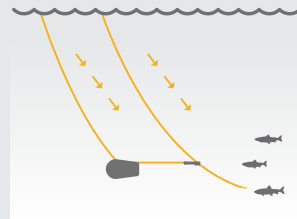


- 1. Rod Holder
- 2. Spool
- 3. Crank or Motor
- 4. Cable
- 5. Boom
- 6. Trolling (or Flash) Weight
- 7. Line Release

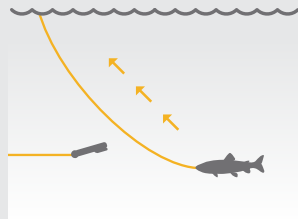
### THE LOWDOWN ON DOWNRIGGER FISHING



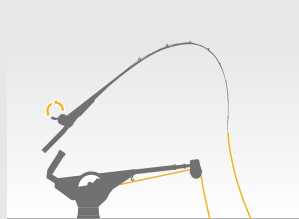
**1. ATTACH AND LOWER**  
To rig, attach the trolling weight (or flash weight) to your line with a "line release." Place the rod in the rod holder and lower the weight to your desired depth.



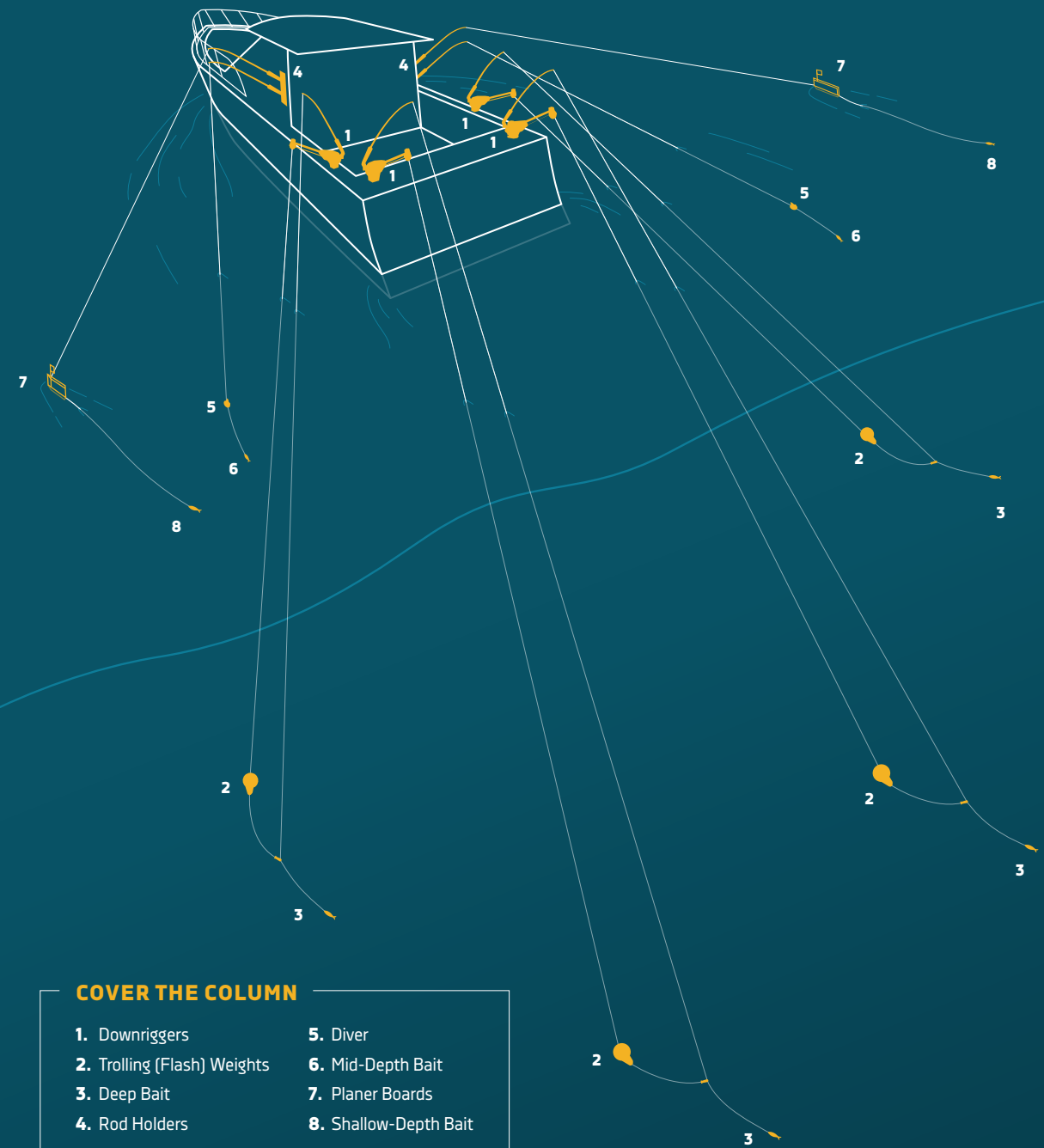
**2. DOWN WITH THE WEIGHT**  
While trolling, the flash weight keeps your lure at your desired depth, allowing the lure to "swim" behind the weight.



**3. LINE RELEASE**  
Once a fish takes the lure, the line release lets go of the line and the fish is on.



**4. REMOVE AND REEL**  
When you see a fish is on, grab the rod from the holder and let the fight begin.



**COVER THE COLUMN**

1. Downriggers	5. Diver
2. Trolling (Flash) Weights	6. Mid-Depth Bait
3. Deep Bait	7. Planer Boards
4. Rod Holders	8. Shallow-Depth Bait

### SETTING UP FOR FISHING SUCCESS

Some anglers run up to four downriggers off the stern and sides of their boat. Yet they aren't limited to deep water fishing. Cannon downriggers give you complete control, so you can easily adjust to fish various depths. When running multiple downriggers, make sure you have enough spread between lines to avoid fouling and tangles. Cannon's Aluminum Mounting Track Systems, Low-Profile Swivel Base and other accessories (pages 22-29) make achieving proper positioning for your lines easy.

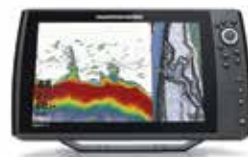
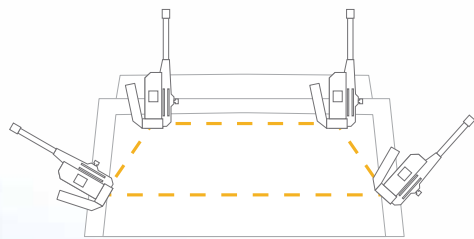


# TECHNOLOGY THAT DOMINATES ON THE WATER

There just isn't another electric downrigger on the market that's built as tough – and as smart – as a Cannon. Check out the features that make it the most advanced downrigger on the water, then choose the one that's right for you.

## THE CONNECTED DOWNRIGGER

Cannon downriggers have always included smart design. But we've come a long way since our first manual models. The Optimum is the first smart, connected downrigger, giving you complete control on the water, from anywhere on your boat.



### WIRELESS INTEGRATION

Your Optimum downriggers can be wirelessly networked, so managing multiple lines is easier than ever. With a push of a button raise all your weights or just one, so you can focus on the catch.

### ONE-BOAT NETWORK™

With the One-Boat Network™, you can control your Optimum downriggers and view trolling data from them on your Humminbird fish finder and the Cannon app on your mobile device.

### MOBILE APP CONTROL

With the Cannon app on your mobile device, you can connect and control up to four Optimum downriggers, access data from your Fish Hawk™ X4D System (sold separately), and download software updates for your downriggers.

## PRECISE BAIT POSITIONING

Our most advanced features keep your tackle right where it needs to be.

### DEPTH CYCLING

Program your downrigger to automatically cycle your tackle to cover more water. Just select your cycle depth, the range and the speed. Your Cannon does the rest.

### PRESET DEPTHS

Store up to five depths in your downrigger, so you can quickly put bait back in the strike zone.

### BOTTOM TRACKING

Set your offset distance from the bottom, and your Cannon downrigger will keep your bait at that precise distance automatically, even as your depth changes (requires transducer accessory, pg. 29).

## EASY OPERATION

No hassle, no holdups. Just simple, smart fishing.

### ADJUSTABLE SPEEDS

Take advantage of five adjustable retrieve and deploy speeds to fit any fishing situation.

### FULL-COLOR LCD

View the Optimum's multiple screens in any light, on the backlit LCD integrated into the downrigger.

### 250 FEET-PER-MINUTE RETRIEVAL SPEED

Get weights out of the water and out of your way fast, so you're clear to fight that fish.

### SOFT STOP

Eliminates sudden stops by gradually slowing the ascent and descent of the weight as it reaches its end point.

### AUTO UP

Automatic weight retrieval that stops your weight safely at the waterline, making it easy to get your lines back out quickly.

### POSITIVE ION CONTROL

Your boat's electronics create a fish-repelling negative energy field in the water. Positive Ion Control neutralizes the negative energy field so fish will stick closer to your line.

### SHORT-STOP

When retrieving a weight, your downrigger will automatically stop it at the water line. This eliminates cable strain caused by bouncing, stops the weight from hitting the boom end, and prevents weights from hitting the hull.

### WATERLINE ZERO

Protect your boat from swinging weights. Your downrigger will automatically keep your weight at a set distance below the waterline.



# CHOOSE YOUR WEAPON

## HOW TO CHOOSE THE RIGHT DOWNRIGGER

Choosing the right downrigger for you will go a long way towards fishing success, and getting more out of the time you spend on the water. By choosing the right downrigger up front, you can spend more time fishing with family and friends, and less time dealing with equipment.

It's not always as simple as big boat vs small boat when it comes to which downrigger you mount. It's more about where you fish and what you're fishing for. One key advantage of an electric is obvious: there's no cranking the flash weight up and down. If you're fishing deep lakes or saltwater, an electric downrigger like the Optimum or Magnum is a smart investment. For smaller lakes or trolling shallower waters, a manual downrigger such as the Uni-Troll™ or Lake-Troll is not only more compact, it's more affordable too. Likewise with an electric downrigger, you'll enjoy more advanced features than with a manual model. Here are a few things to consider.

## ELECTRIC ADVANTAGES

- 1. Convenience
- 2. Speed of Retrieval
- 3. Advanced Features
- 4. Automated Features
- 5. Longer Booms for Bigger Spreads



**OPTIMUM**  
Pages 10-13

250 Feet-Per-Minute Retrieval Speed

Stainless Steel Telescopic Boom  
(24" to 53")

Low-Profile Swivel Base

400' / 150 lb  
Stainless Steel Cable



**MAGNUM 10**  
Pages 14-15

250 Feet-Per-Minute Retrieval Speed

Stainless Steel Telescopic Boom  
(24" to 53")

Low-Profile Swivel Base

250' / 150 lb  
Stainless Steel Cable



**MAGNUM 5**  
Pages 14-15

250 Feet-Per-Minute Retrieval Speed

Stainless Steel Boom  
(24")

Universal Base

250' / 150 lb  
Stainless Steel Cable



**UNI-TROLL 10**  
Pages 16-17

2:1 Retrieval Speed

Stainless Steel Telescopic Boom  
(24" to 53")

Low-Profile Swivel Base

200' / 150 lb  
Stainless Steel Cable



**UNI-TROLL 5**  
Pages 16-17

2:1 Retrieval Speed

Stainless Steel Boom  
(24")

Universal Base

200' / 150 lb  
Stainless Steel Cable



**EASI-TROLL**  
Pages 18-19

1.5:1 Retrieval Speed

Stainless Steel Boom  
(24")

Universal Base

150' / 150 lb  
Stainless Steel Cable



**LAKE-TROLL**  
Pages 18-19

1:1 Retrieval Speed

Composite Boom  
(18")

Tab Lock Base

100' / 135 lb  
Stainless Steel Cable



**MINI-TROLL**  
Pages 18-19

1:1 Retrieval Speed

Composite Boom  
(12")

Clamp Mount Base

100' / 135 lb  
Stainless Steel Cable

## MANUAL ADVANTAGES

- 1. Easy to Operate
- 2. Affordability
- 3. Lightweight
- 4. Multiple Sizes and Options Available
- 5. Works with Kayaks and Other Small Craft



NEW

# OPTIMUM

## CONNECTED DOWNRIGGER

The smart, connected Optimum downrigger gives you more information and more control than you've ever thought possible. Using Optimum's full-color LCD display, your Humminbird fish finder or even your mobile device, you'll not only have access to critical trolling data anywhere on your boat, you also have full control of your weights.



Take full control of your Optimum through the Cannon mobile app.



**OPTIMUM**  
Part No. 1902335

See it all, clear as day on Optimum's full-color, 3.5" LCD screen.



## HOW OPTIMUM™ MAKES A DIFFERENCE ON THE WATER

No matter where you are, you're in charge. Cycle, raise or lower weights from anywhere on the boat. Plus with Optimum you'll always be in the know, with critical trolling information at your fingertips. Finally, you can pair your Optimum with the Fish Hawk X4D\* System, so you can even know the exact depth, temperature and speed at the trolling weight. For precision placement of bait, Optimum has no equal.

\*Fish Hawk X4D Sold Separately



**WIRELESS INTEGRATION**

You can wirelessly network up to four Optimum downriggers, making it easier than ever to cover more water and manage multiple lines in the water. And when you've got a fish on, one button can bring all your weights up quickly and simultaneously.



**BOTTOM TRACKING**

Set your offset distance from the bottom, and your Cannon downrigger will keep your bait at that precise distance automatically, even as your depth changes (requires Cannon Transducer accessory, pg. 29).



**AUTO UP**

With one push of a button, instantly retrieve all your weights at once or one at a time, and bring them to the waterline.



**MOBILE APP CONTROL**



**FULL-COLOR LCD SCREEN**



**DEPTH CYCLING**



**SHORT STOP**



**POSITIVE ION CONTROL**



**LIMITED LIFETIME WARRANTY**

## RECOMMENDED ACCESSORIES

**Retro-Ease™ Weight Retriever**  
Part No. 2250122

**Cannon Downrigger Transducer**  
Part No. 1491072

**Rod Holder Downrigger Mount**  
Part No. 1907024

## ADDITIONAL MODELS



**OPTIMUM TS**  
Part No. 1902340

With a stainless steel spool and 316 marine-grade stainless steel boom, the Optimum TS is optimized for saltwater use. See more on page 30.

## ADDITIONAL FEATURES

- 250 Feet-Per-Minute Retrieval Speed
- Five Adjustable Retrieve And Deploy Speeds
- Stainless Steel Telescopic Boom Extends From 24" to 53"
- Two Dual Axis Adjustable Rod Holders
- One Dual Axis Adjustable Rod Holder (*Optimum TS*)
- Easy Spool Access
- Intuitive Keypad Works With LCD Screen
- Low-Profile Swivel Base
- Composite Spool
- Stainless Steel Spool (*Optimum TS*)
- 400' of 150-lb Stainless Steel Cable
- Line Terminator With Two Uni-Line Releases
- Waterproof Connections
- Integrated Ball Storage Hook
- Enclosed Boom End
- 20-lb Weight Capacity
- Corrosion-Resistant Construction
- Manual Crank Handle

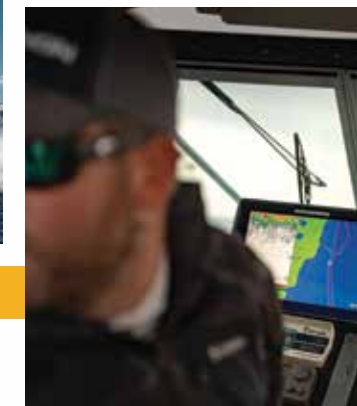


NEW

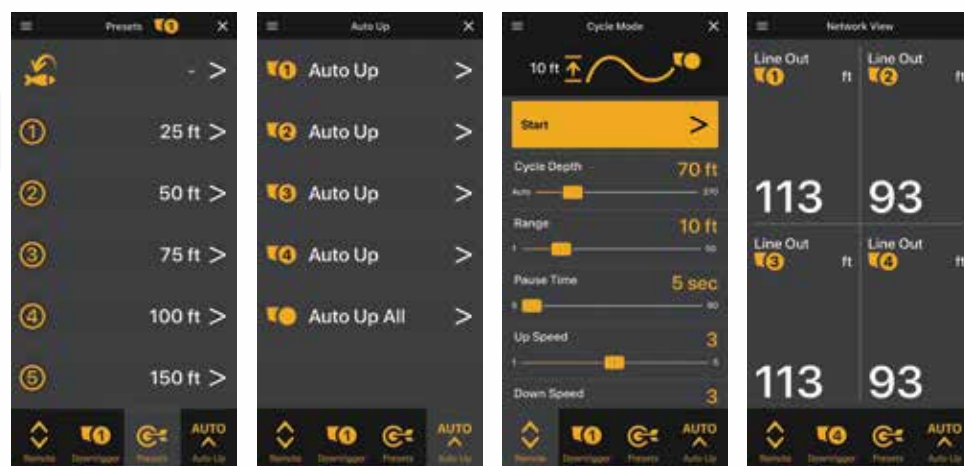
# OPTIMUM

## MORE INFO IN MORE PLACES

Successful trolling requires information and precise control. The new Optimum downrigger gives you more information than you ever thought possible, and total control no matter where you are on your boat.



Download the Cannon app to your mobile devices and up to four Optimum downriggers are at your fingertips.



Instantly select from preset depths, or the depth of your last catch.

Fish on? Push one button to bring one or all of your flash weights up to the waterline.

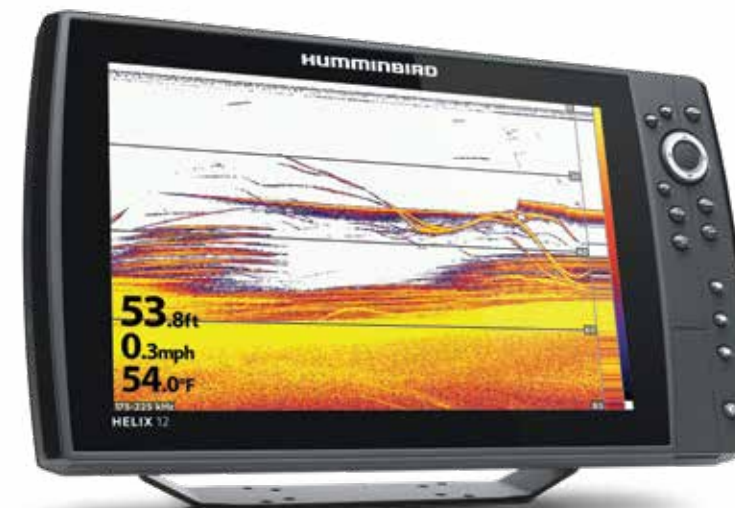
Quickly and easily set Depth Cycles, to cover more of the column.

Keep track of exactly what depth each downrigger is set to.

Made for iPhone | Made for Android



Optimum wirelessly connects with the Fish Hawk X4D System (sold separately). Add one to your setup, and you can view your weight's actual depth, trolling speed, water temperature at depth and more. Plus, you can view the information on your Optimum display, Humminbird fish finder and your mobile devices through the Cannon app.



LCD FULL-COLOR LCD SCREEN

Use the multiple screens available on your Optimum's full-color LCD display to monitor your weights, set depths, cycle weights and more. The 3.5" display is readable in any light, so you're always in the know.



With the One-Boat Network, you can control your Optimum downriggers and view information from them on your Humminbird fish finder and the Cannon app on your mobile devices. To help you get more out of every moment you spend on the water, we're continually working to integrate new capabilities into the One-Boat Network.





# MAGNUM

GIVE YOUR BOAT SERIOUS MUSCLE

Seriously tough. Seriously powerful. Magnum is the go-to downrigger for serious anglers for exactly these reasons. Its ruggedness and reliability have been proven on the water, year after year. But smart anglers know Magnum has a sophisticated side too.



Three-Digit Depth Counter

Up/Down Switch

**MAGNUM 10™**  
Part No. 1902305

## HOW MAGNUM MAKES A DIFFERENCE ON THE WATER

Magnum's unique design and advanced features like the Low-Profile Swivel Base and Three-Digit Depth Counter make achieving perfect bait positioning easy. When there's a strike, technology such as Auto Up lets anglers focus totally on landing that fish. Explore all the features that will turn you into a Magnum fan.



**POSITIVE ION CONTROL**

Creates a positive energy field in the water, to negate fish-repelling negative ions created by your boat's electrical system.



**FAST RETRIEVAL SPEED**

The 250 feet-per-minute retrieval speed gets lines in and out of the way – and ready to go back out – in no time flat.



**AUTO UP**

Flip the up/down switch and your Magnum automatically retrieves your weight, stopping at the water line.



**SHORT STOP**

When retrieving a weight, your downrigger will automatically stop it at the waterline. This eliminates cable strain caused by bouncing, stops the weight from hitting the boom end, and prevents weights from hitting the hull.

### RECOMMENDED ACCESSORIES

**Low-Profile Swivel Base**  
Part No. 2207003 (Standard)  
Part No. 1903002 (Stainless Steel)

**Quick Stacker™ Release**  
Part No. 2250120-1

**Cannon Cover™**  
Part No. 1903030 (Black)  
Part No. 1903031 (White)

### ADDITIONAL MODELS



**MAGNUM 10 TS**  
Part No. 1902310

With a stainless steel spool and 316 marine-grade stainless steel boom, it's optimized for saltwater fishing. Compare all Magnum models on page 30.



**MAGNUM 5**  
Part No. 1902300

Features a universal base and stainless steel, 24" fixed boom.

### ADDITIONAL FEATURES

Dual Axis Adjustable Rod Holder

Universal Base (Magnum 5)

Low-Profile Swivel Base (Magnum 10 / Magnum 10 TS)

Integrated Ball Storage Hook

Removable Side Plate

24" Stainless Steel Boom (Magnum 5)

Stainless Steel Telescopic Boom Extends From 24" to 53" (Magnum 10 / Magnum 10 TS)

Stainless Steel Spool (Magnum 10 TS)

Enclosed Boom End

20-lb Weight Capacity

250' of 150-lb Test Stainless Steel Cable

Line Release



**LIMITED LIFETIME WARRANTY**



# UNI-TROLL

GET YOUR GEARS TURNING

The Uni-Troll is more than a manual downrigger. It gives anglers new to controlled depth fishing a whole new world of experiences, and puts them in total control. Give yourself an advantage and make fishing even more enjoyable with a Uni-Troll on your boat.



 Three-Digit Depth Counter

**UNI-TROLL 10**  
Part No. 1901130

## RECOMMENDED ACCESSORIES

Terminator Kit  
Part No. 2250002

10 lb Flash Weight  
Part No. 2295184

Uni-Stacker Release  
Part No. 2250105

## ADDITIONAL MODELS



**UNI-TROLL 10 TS**  
Part No. 1901140

With a stainless steel spool and 316 marine-grade stainless steel telescopic boom, it's optimized for saltwater use.



**UNI-TROLL 5**  
Part No. 1901120

This model features a composite spool and 24" stainless steel boom.

## HOW UNI-TROLL™ MAKES A DIFFERENCE ON THE WATER

Precision. Control. Speed. These are the advantages anglers enjoy with a Uni-Troll downrigger on their boat. Controlled weight descent lets you put bait exactly where you want it. When it's "fish on!", the fast retrieval rate means there's less cranking to get a line in and out of the way.



**CONTROLLED WEIGHT DESCENT**

Precisely and easily position bait with the unique One-Hand Clutch Deploy mechanism.



**FAST RETRIEVAL SPEED**

The Uni-Troll's 2:1 retrieval rate makes getting lines out of the water fast and nearly effortless.



**DUAL AXIS ROD HOLDER**

Make quick, one-handed angle adjustments; enjoy easy vertical positioning; and full 360° rotation.

## ADDITIONAL FEATURES

Dual Axis Adjustable Rod Holder

Ergonomic Crank Handle

Three-Digit Depth Counter

Low-Profile Swivel Base (Uni-Troll 10 / Uni-Troll 10 TS)

Universal Base (Uni-Troll 5)

Composite Spool (Uni-Troll 5 / Uni-Troll 10)

Stainless Steel Spool (Uni-Troll 10 TS)

Integrated Ball Storage Hook

Stainless Steel Telescopic Boom Extends From 24" to 53" (Uni-Troll 10 / Uni-Troll 10 TS)

24" Stainless Steel Boom (Uni-Troll 5)

Enclosed Boom End

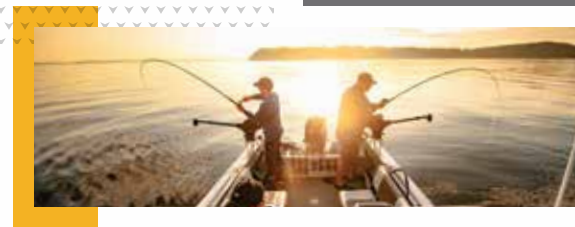
20-lb Weight Capacity

200' of 150-lb Test Stainless Steel Cable

Line Release



**LIMITED LIFETIME WARRANTY**





# MANUAL DOWNRIGGERS

BIG-TIME PERFORMANCE FOR A SMALLER BOAT

The smartest move an angler can make is to mount a Cannon manual downrigger. Cannon gives you more models, more options and more accessories to choose from, so you have more fish hitting your line.



Three-Digit  
Depth Counter

## EASI-TROLL™

Part No. 1901020

A vertical reel/brake, 150' of 150-lb test stainless steel cable and a three-digit depth counter come standard.

## HOW MANUAL DOWNRIGGERS MAKE A DIFFERENCE ON THE WATER

This isn't "trolling," this is controlled depth fishing, and nothing will change the way you fish faster than adding a Cannon manual downrigger to your boat. Each offers a level of precision and control that simply can't be achieved with rods alone.



## LAKE-TROLL™

Part No. 1901250

A vertical reel/brake, 100' of 135-lb test stainless steel cable and a swivel-head depth counter come standard.



## MINI-TROLL™

Part No. 1901200

Perfect for kayaks, canoes and other small craft. A horizontal reel/brake, 100' of 135-lb test stainless steel cable and a swivel-head depth counter come standard.



CONTROLLED WEIGHT  
DESCENT

Precisely and easily position bait with the unique One-Hand Clutch Deploy mechanism.



FAST RETRIEVAL  
SPEED

The Easi-Troll™ has 1.5:1 retrieval rate, so you can get lines out of the water and out of the way, fast.



LIMITED LIFETIME  
WARRANTY

## RECOMMENDED ACCESSORIES

Deck Plate  
Part No. 2200693

Mini-Troll Accessory Kit  
Part No. 2250005

Three-Position Adjustable Rod Holder  
Part No. 2450169-1

## ADDITIONAL FEATURES

One-Hand Clutch Deploy

Composite Spool

Line Release

Ergonomic Crank Handle (Easi-Troll)

Three-Digit Depth Counter (Easi-Troll)

Universal Base (Easi-Troll)

Single Axis Rod Holder (Easi-Troll)

24" Stainless Steel Boom (Easi-Troll)

Enclosed Boom End (Easi-Troll)

12-lb Weight Capacity (Easi-Troll)

Swivel-Head Depth Counter (Lake-Troll)

Tab Lock Base (Lake-Troll)

18" Composite Boom (Lake-Troll)

8-lb Weight Capacity (Lake-Troll)

Tube-Style Rod Holder (Lake-Troll/Mini-Troll)

Clamp Mount Base (Mini-Troll)



# RIGGING GUIDE

## HIT THE WATER RUNNING

When you're thinking about where to mount your downrigger – whether it's electric or manual – your first consideration should be where it will be easiest to access, observe and operate. Ask yourself if you'll be able to see your rod and react quickly to strikes. If you're mounting multiple downriggers, will you be able to get a good trolling spread? Will you need room for rod holders, mounts and other accessories? Plan your setup accordingly.

### POWER UP

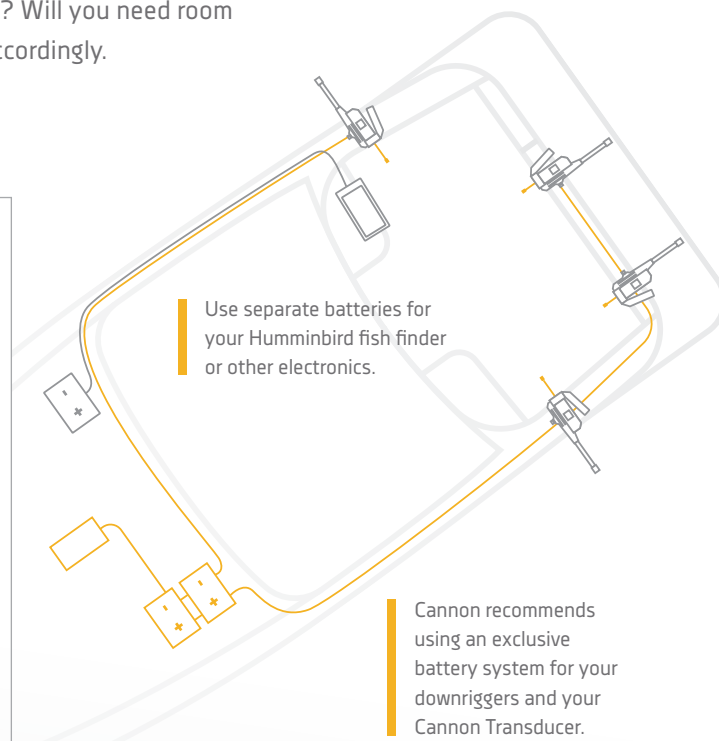
Here are some tips from the pros to consider when rigging your boat for power. For best results, have your electronics wired by a qualified marine electrician.

- Radios and sonar units should not be wired to downrigger battery systems. Cannon recommends using an exclusive battery system for your downriggers, to avoid damage. When operating multiple electric downriggers, run a maximum of two per dedicated deep cycle battery.
- The grounded electronics on your boat interact with water, creating a weak negative electrical field that can damage metal parts and drive away fish. Make sure your anode is in working order to protect the boat, and use Cannon's Positive Ion Control to eliminate that fish-repelling negative energy field in the water.
- For safety and compliance reasons, we recommend that you follow American Boat and Yacht Council (ABYC) standards when rigging your boat.

### POWER ACCESSORIES

Battery End Cable (Part No. 1903017)

Flush Mount Power Port (Part No. 1903012 (Black)/1903013 (White))



### NECESSARY INSTALLATION TOOLS

- Drill and 1/4" Drill Bit
- Pencil, Marker or Similar Marking Tool
- Drill
- 7/16" Box End Wrench
- Wire Cutters
- Pliers
- #3 Phillips Screw Driver
- Needle Nose Pliers
- Masking Tape
- Anti-Seize
- A Second Person to Help

### WIRE SPECIFICATIONS

The gauge of wiring needed is determined by how much rigging your boat requires. Use this as a guide.

- 0 to 15 ft (0 to 5 m) – 10 gauge
- 15 to 25 ft (5 to 8 m) – 8 gauge
- 25 to 30 ft (8 to 9 m) – 6 gauge

### GET ON TRACK

If you want the flexibility to add and remove accessories, or reconfigure quickly at a moment's notice, Cannon's Aluminum Mounting Track makes it fast and simple. Add tracks anywhere you'd place downriggers, rod holders or other fishing hardware. Then take advantage of all the interchangeable accessories in the system.

Cannon's Aluminum Track System and mounting hardware provides you incredible flexibility. One possible configuration is shown here.

#### Aluminum Track System

- Part No. 1904025 – 6"
- Part No. 1904026 – 12"
- Part No. 1904027 – 18"
- Part No. 1904028 – 24"
- Part No. 1904029 – 36"

#### Optimum Downrigger

Part No. 1902335

#### Rod Holder Downrigger Mount

Part No. 1907024

#### 6" Fixed Base Pedestal

Part No. 1904031 – 6"

#### Dual Axis Adjustable Rod Holders

Part No. 1907002

### DOWNRIGGER HACKS

Here are some tips from the pros to help you get the most from your Cannon downrigger.

#### USE CANNON DECK PLATES

When mounting directly to the gunwale of the boat, these add stability and prevent deflection.

Part No. 2200693

#### THE BALL HOOK IS YOUR GUIDE

You can use the ball hook as a cable guide to help wind cable when retrieving a weight.

#### DON'T GO OVERBOARD

The Retro-Ease Weight Retriever eliminates the need to lean out over the water to retrieve a weight.

Part No. 2250122





# ACCESSORIES

## ROD HOLDERS & TRACK SYSTEMS

AS EASY AS POINT AND FISH

You think we stopped at the world's most dependable and innovative downriggers? Check out Cannon's versatile rod holders and rock-solid bases. We have everything you need to easily customize your boat for your best fishing experience. Once you've got the right rod holders and other accessories, mount it all up on Cannon's proven track system, which features interchangeable components made of tough, durable aluminum.

### DUAL AXIS ADJUSTABLE ROD HOLDER

360° rotation. A quick-release pistol grip. One-handed ratcheting adjustments. And it locks into any of six positions or can hold your rod vertically. Maybe there's a situation that requires a stronger, more versatile rod holder – but we haven't found it yet. Add the ultimate weapon to our track system and lock down more fish.

Part No. 1907002

### SINGLE AXIS ADJUSTABLE ROD HOLDER

All the versatility of our Dual Axis model, but with only side-to-side rotation. This trusted rod holder is a workhorse on our innovative track system.

Part No. 1907001

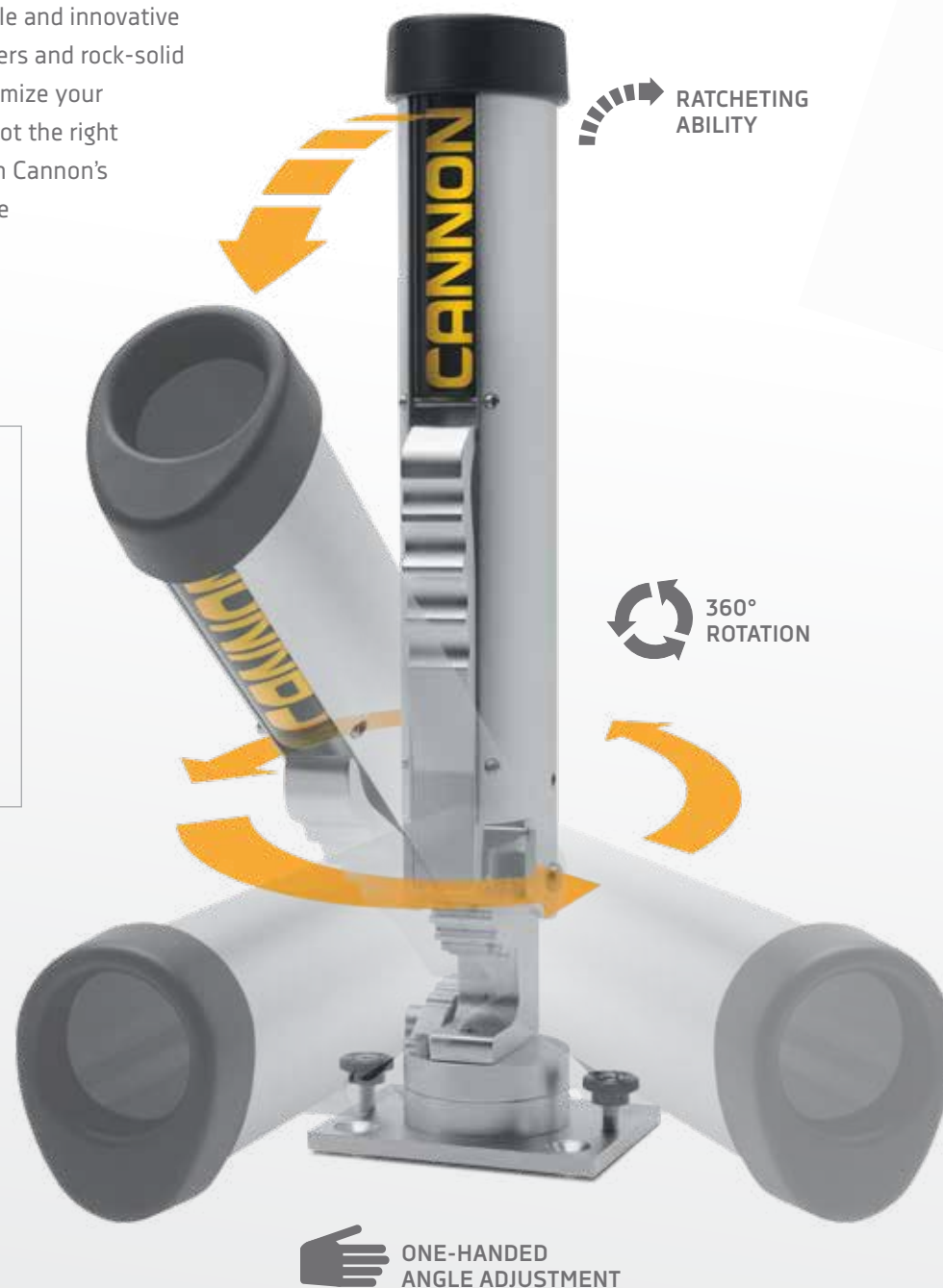
**RAIL MOUNT:** Fits round or square rails from 3/4" to 1-1/4".

Part No. 1904015

### FIXED ANGLED ROD HOLDER

Angled at 60°, with 90° of side-to-side rotation, this 10" rod holder gets you in the game and is compatible with our track system.

Part No. 1907000



### ALUMINUM MOUNTING TRACK SYSTEM

This track uses locking grooves to prevent accessories from twisting, and allows for components to be easily removed or replaced. Includes mounting hardware.

Part No. 1904025 - 6"  
Part No. 1904026 - 12"  
Part No. 1904027 - 18"  
Part No. 1904028 - 24"  
Part No. 1904029 - 36"

### ALUMINUM FIXED BASE DOWNRIGGER PEDESTAL

For surface or track mounting, this sturdy fixed base comes in 4" and 6" heights. The top plate is pre-drilled and tapped to allow mounting of a Cannon swivel base and downrigger (and other downrigger brands).

Part No. 1904030 - 4"  
Part No. 1904031 - 6"

### ALUMINUM SWIVEL BASE DOWNRIGGER PEDESTAL

For surface or track mounting, this smooth-action swivel base rotates 360°, with 16 locking points spaced every 22.5°. The top plate is pre-drilled and tapped for mounting Cannon downriggers (and other downrigger brands).

Part No. 1904032 - 4"  
Part No. 1904033 - 6"

### ROD HOLDER DOWNRIGGER MOUNT

Mounts two Dual Axis Adjustable Rod Holders between the mounting and swivel bases of your Cannon downrigger.

Part No. 1907024

### ROD HOLDER DECK MOUNT PLATE

This adaptable 4" x 3" plate works with Cannon Dual Axis Rod Holders, pedestal mount tracks and downrigger pedestal mounts. Plates can be mounted in a variety of locations, and a protective mounting boot lets you avoid sharp edges. Includes mounting hardware.

Part No. 1904000

### ROD HOLDER RAIL MOUNT

This convenient rail mount can attach our Single Axis Rod Holder to either round or square rails, from 3/4" to 1-1/4".

Part No. 1904015



# RIGGING GUIDE

## FISH SMARTER

You can count on your Cannon downrigger for years of dependable service, as well as a smarter design. Our goal is to eliminate every obstacle that gets between you and the fish. And if we can't eliminate it, we make it easier to overcome. Here are just a few ways Cannon works to make every moment you spend on the water more enjoyable.

### CANNON® EDGE DESIGN

Features fewer moving parts, one-piece composite construction, corrosion-resistant design and protected electronics to create an unstoppable fishing machine. All backed with a limited lifetime warranty.

### REAR MOUNT ROD HOLDER

This downrigger-mounted, single rod holder features dual-axis adjustability. Standard on every electric downrigger we make.

Part No. 1907070



### STAINLESS STEEL SPOOL\*

Built to handle monofilament or popular "super lines" without snapping or breaking, and included on all of our Tournament Series (TS) electric downriggers. Stainless steel spools are also available as an accessory, see pg. 29.

Part No. 1903051



### ENCLOSED BOOM END

By enclosing the boom ends, we prevent line jumps – so you can enjoy uninterrupted fishing and easier operation.



### RETRO-EASE WEIGHT RETRIEVER

Brings the weight right to you so you can avoid leaning out or swinging the boom in for rigging. The durable cord is 8' long.

(Part No. 2250122)



### LINE TERMINATORS

Cannon's downrigger cable terminator system is the strongest on the market, and incredibly easy to use. Once your line is in place, it's locked tight. Available as singles (Part No. 2250141) or as a kit with Cushion Cartridges, Cannon Terminators and Snap Swivels (Part No. 2250002).



### FLASH WEIGHTS

Vinyl coated to prevent scratching boats; reflective prism tape on the fin for extra fish attraction.

Part No. 2295002 – 4 lb  
Part No. 2295180 – 6 lb  
Part No. 2295182 – 8 lb  
Part No. 2295184 – 10 lb  
Part No. 2295190 – 12 lb  
Part No. 1908016 – 16 lb



### REMOVABLE SIDE PLATE

Easily access the spool to switch lines, fix snags and make adjustments on any electric downrigger.

### LOW-PROFILE SWIVEL BASE\*

Unrivaled versatility to keep your downrigger perfectly positioned and your lines easily in reach.

Part No. 2207003 (Standard)

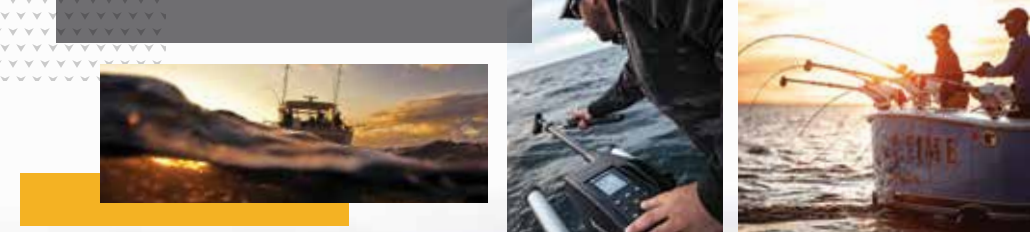


### LINE RELEASES

Count on Cannon line releases for peak performance, with no line-damaging twisting, winding or looping. You'll find releases for both freshwater and saltwater, which are perfect for your style of fishing. For all our line releases, see pages 26-27.



\*Available on select models





# ACCESSORIES

## MOUNTS, BASES AND LINE RELEASES

RIGGING THE SYSTEM IN YOUR FAVOR



### UNIVERSAL BASE

Our universal base features heavy-duty composite construction for strength and UV resistance. Upgrade to the 316-grade stainless steel model for unrivaled protection against rusting, pitting and corroding.

Part No. 1904040 (Composite)  
Part No. 1904045 (Stainless Steel)



### DECK PLATE

Reinforces Cannon bases and pedestal mounts installed on thin decks and gunwales. Machined aluminum construction, powder coated to resist corrosion.

Part No. 2200693



### GIMBAL MOUNTS

Mount your downrigger in 30° flush mount rod holders with our sturdy, corrosion-resistant aluminum gimbal mounts. For added corrosion protection, step up to the stainless steel model. Both models are available in 9" or 12" tube lengths with 1-1/2" outer diameter tube.

Part No. 2250927 (Aluminum - 9")  
Part No. 2250928 (Aluminum - 12")  
Part No. 1903005 (Stainless Steel - 9")  
Part No. 1903006 (Stainless Steel - 12")



### TAB LOCK BASE

Allows for easy removal and replacement of Lake-Troll, Sport-Troll™, Legacy Easi-Troll, and Mini-Mag™ downriggers. Corrosion- and UV-resistant composite construction.

Part No. 2207001



### LOW-PROFILE SWIVEL BASE

With 16 locking points, this base allows for 360° downrigger rotation with locking positions every 22.5°. Composite components and stainless steel construction make the standard model as strong as it is versatile. Also available in a 316-grade stainless steel model for added strength and corrosion resistance.

Part No. 2207003 (Standard)  
Part No. 1903002 (Stainless Steel)



### RAIL/SIDE MOUNT

Designed to secure your downrigger to the "T" joints on rails of boats with narrow gunwales. Machined aluminum construction, powder coated to resist corrosion.

Part No. 2250940



### CLAMP MOUNT

Secures downrigger to the gunwale or transom. Works with Lake-Troll, Sport-Troll, Legacy Easi-Troll and Mini-Mag downriggers. Built with machined aluminum and powder coated to resist corrosion. Maximum clamp opening: 2".

Part No. 2207327



### UNI-TROLL MOUNTING BASE

Features heavy-duty composite construction for superior strength and UV resistance.

Part No. 2207002



### UNI-LINE RELEASE

Two adjustment points allow tension settings from 2 to 22 pounds, for slow trolling with live baits or going after light-hitting walleyes. One-hand tension release for use on any test line in saltwater or freshwater.

Tension Setting: Adjustable - Heavy  
Part No. 2250009



### UNI-STACKER RELEASE

Just like the Uni-Line Release, with an extra stacker clip to allow fishing at multiple depths off a single weight.

Tension Setting: Adjustable - Heavy  
Part No. 2250105



### OFFSHORE LINE RELEASE

Quick and easy to set even on turbulent waters, it won't damage your line by twisting, winding, or looping. Spring-loaded "clothespin" design allows for all types of fishing.

Tension Setting: Medium  
Part No. 2250106



### OFFSHORE STACKER RELEASE

Adds the ability to fish at multiple depths off a single weight with the popular Offshore Line Release.

Tension Setting: Medium  
Part No. 2250107



### QUICK RELEASE™

Quick and easy to use with no twisting, winding, or looping to damage your line, even in a bouncing boat. Adjustable tension lets you match your line weight and fishing style.

Tension Setting: Adjustable - Medium  
Part No. 2250119



### QUICK STACKER™ RELEASE

Attaches directly to your downrigger cable for stacking applications. Quick and easy to use with no twisting, winding, or looping to damage your line. Adjustable tension lets you match your line weight and fishing style.

Tension Setting: Adjustable - Medium  
Part No. 2250120-1



### OFFSHORE SALTWATER LINE RELEASE

Corrosion-resistant, high-tension spring is designed for heavier saltwater lines. Troll at high speeds in deep water with its heavy-duty release. Anti-fouling pins prevent line from snagging behind the gripper pads.

Tension Setting: Heavy  
Part No. 2250109



### PINCH-R-RELEASE

Spring-action clip opens quickly and easily with finger pressure. The deeper the line is set back in the pads, the greater the tension. Tension settings range from 2 to 12 pounds.

Tension Setting: Adjustable - Light  
Part No. 2250111



# ACCESSORIES

EVERYTHING FROM FLASH WEIGHTS TO COVERS



## THREE-POSITION ADJUSTABLE ROD HOLDER

Three-position configuration delivers fast baitcast or spinning rod pickup. Spring-loaded tension knob for quick rod adjustment. The 360° base can be top or side mounted.

Part No. 2450169-1

**ROD HOLDER ACCESSORIES:** Adapt this rod holder to fit the way you fish.



6" Extension Post  
Part No. 1907040



Flush Mount Adapter with Cover  
Part No. 1907030



Rail Mount Adapter  
Part No. 1907050



Side/Deck Mount  
Part No. 1907060



## REAR MOUNT ROD HOLDER

Downrigger-mounted rod holder features dual axis adjustability. Fits all 2011 and newer Cannon downriggers.

Part No. 1907070



## FRONT MOUNT DUAL ROD HOLDER

Two independently adjustable rod holders, with gimbals and drain holes. Comes with two aluminum tube clamps and a dual mounting bracket. Fits all 1-9/16" Cannon booms (including the telescopic boom).

Part No. 2450163



## TERMINATOR

Rock-solid terminator safely attaches the weight to the downrigger cable.

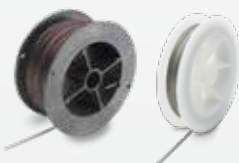
Part No. 2250141



## FLASH WEIGHTS™

Vinyl coated to prevent scratching boats; reflective prism tape on the fin for extra fish attraction.

Part No. 2295002 - 4 lb  
Part No. 2295180 - 6 lb  
Part No. 2295182 - 8 lb  
Part No. 2295184 - 10 lb  
Part No. 2295190 - 12 lb  
Part No. 1908016 - 16 lb



## BRAIDED DOWNRIGGER CABLES

Choose 150' of 7-strand, 302-grade stainless steel cable; or 200' and 400' lengths of 7-strand, 316-grade stainless steel cable. Each cable is 150-lb test.

Part No. 2215392 - 150'  
Part No. 2215396 - 200'  
Part No. 2215397 - 400'



## TERMINATOR KIT™

Includes six each of the superior Cushion Cartridges, Terminators and Snap Swivels.

Part No. 2250002



## RETRO-EASE™ WEIGHT RETRIEVER

Brings the weight right to you so you can avoid leaning out or swinging the boom for rigging. The durable cord is 8' long.

Part No. 2250122



## CANNON DOWNRIGGER TRANSDUCER

Provides bottom tracking ability on Optimum and Digi-Troll™ 10 downriggers. Network downriggers to troll at set distances from the bottom through this single transducer.

Part No. 1491072



**NEW**

## BATTERY END CABLE

This battery-side end cable is a replacement or supplement for all Cannon electric downriggers. Its convenient plug system makes removal and installation of electric downriggers fast and easy.

Part No. 1903017



## FLUSH MOUNT POWER PORT

For quick thru-hull connection to a Cannon downrigger power cable. Quickly connects to the yellow female battery end plug from your downrigger, with no cutting or splicing. The watertight cover and gasket shield your downrigger plug from corrosion when not in use.

Part No. 1903012 (Black)  
Part No. 1903013 (White)



## CANNON LOCK

Locks large-bodied downriggers securely to the boat with a pin-tumbler lock. Fits Optimum, Digi-Troll 10, Digi-Troll 5, Magnum 10™ and Magnum 5 models.

Part No. 1903020



## CANNON COVER™

Protect your downrigger with a professional-grade cover. It guards against the elements with a secure Velcro® fit and non-abrasive backing.

Part No. 1903030 (Black)  
Part No. 1903031 (White)



## MINI-TROLL ACCESSORY KIT

Kit includes a tube-style rod holder, 4-pound flash weight and Uni-Line Release for the Mini-Troll™ downrigger.

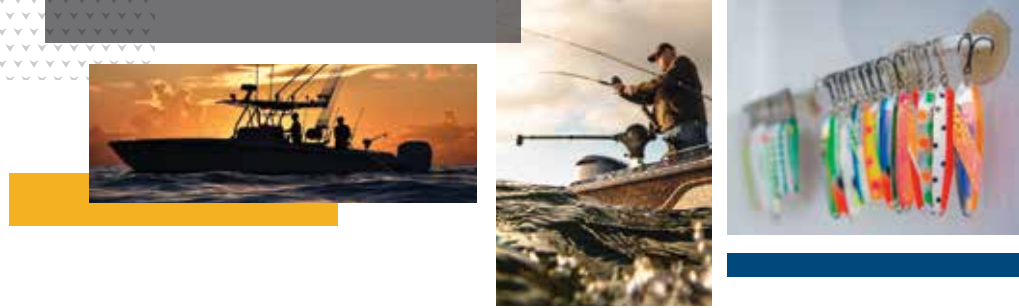
Part No. 2250005



## DOWNRIGGER SPOOL

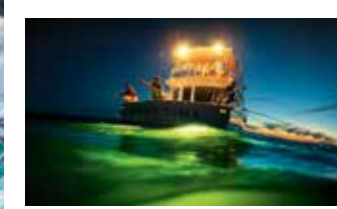
It never hurts to have a spare composite or 316-grade stainless steel spool on hand or when needing a replacement.

Part No. 1903050 (Composite)  
Part No. 1903051 (Stainless Steel)





# FEATURES AT-A-GLANCE



**CANNON APPAREL**  
Fly the colors with our official line of Cannon fishing clothing. Get yours at [cannon-apparel.com](http://cannon-apparel.com).

## ELECTRIC



	OPTIMUM TS	OPTIMUM	MAGNUM 10 TS	MAGNUM 10	MAGNUM 5
Wireless Integration	Yes	Yes	-	-	-
Mobile App Control	Yes	Yes	-	-	-
Fish Hawk Compatible	Yes	Yes	-	-	-
Depth Cycle	Yes	Yes	-	-	-
Preset Depth Storage	Yes	Yes	-	-	-
Bottom Tracking*	Yes	Yes	-	-	-
Adjustable Speeds	Yes	Yes	-	-	-
Waterline Zero	Yes	Yes	-	-	-
Soft Stop	Yes	Yes	-	-	-
Short-Stop	Yes	Yes	Yes	Yes	Yes
Positive Ion Control	Yes	Yes	Yes	Yes	Yes
Auto Up	Yes	Yes	Yes	Yes	Yes
Removable Side Plate	Yes	Yes	Yes	Yes	Yes
Line on Spool	400'/150 lb Stainless Steel Cable	400'/150 lb Stainless Steel Cable	250'/150 lb Stainless Steel Cable	250'/150 lb Stainless Steel Cable	250'/150 lb Stainless Steel Cable
Retrieval Speed	250' Per Minute	250' Per Minute	250' Per Minute	250' Per Minute	250' Per Minute
Rod Holders	Dual Axis Adjustable (1)	Dual Axis Adjustable (2)	Dual Axis Adjustable (1)	Dual Axis Adjustable (1)	Dual Axis Adjustable (1)
Mounting Base	Low-Profile Swivel Base	Low-Profile Swivel Base	Low-Profile Swivel Base	Low-Profile Swivel Base	Universal Base
Spool	Stainless Steel	Composite	Stainless Steel	Composite	Composite
Boom	Stainless Steel Telescopic (24" to 53")	Stainless Steel Telescopic (24" to 53")	Stainless Steel Telescopic (24" to 53")	Stainless Steel Telescopic (24" to 53")	Stainless Steel (24")
Depth Counter	Digital	Digital	Analog	Analog	Analog
Weight Capacity	20 lb	20 lb	20 lb	20 lb	20 lb
Limited Lifetime Warranty	Yes	Yes	Yes	Yes	Yes
Includes Line Release	Yes (2)	Yes (2)	Yes (1)	Yes (1)	Yes (1)
Integrated Ball Storage Hook	Yes	Yes	Yes	Yes	Yes
One-Hand Clutch Deploy	n/a	n/a	n/a	n/a	n/a
Ergonomic Crank Handle	n/a	n/a	n/a	n/a	n/a
Enclosed Boom End	Yes	Yes	Yes	Yes	Yes

\*Requires Cannon Transducer Accessory

## MANUAL



	UNI-TROLL 10 TS	UNI-TROLL 10	UNI-TROLL 5	EASI-TROLL	LAKE-TROLL	MINI-TROLL
Wireless Integration	n/a	n/a	n/a	n/a	n/a	n/a
Mobile App Control	n/a	n/a	n/a	n/a	n/a	n/a
Fish Hawk Compatible	n/a	n/a	n/a	n/a	n/a	n/a
Depth Cycle	n/a	n/a	n/a	n/a	n/a	n/a
Preset Depth Storage	n/a	n/a	n/a	n/a	n/a	n/a
Bottom Tracking*	n/a	n/a	n/a	n/a	n/a	n/a
Adjustable Speeds	n/a	n/a	n/a	n/a	n/a	n/a
Waterline Zero	n/a	n/a	n/a	n/a	n/a	n/a
Soft Stop	n/a	n/a	n/a	n/a	n/a	n/a
Short-Stop	n/a	n/a	n/a	n/a	n/a	n/a
Positive Ion Control	n/a	n/a	n/a	n/a	n/a	n/a
Auto Up	n/a	n/a	n/a	n/a	n/a	n/a
Removable Side Plate	n/a	n/a	n/a	n/a	n/a	n/a
Line on Spool	200'/150 lb Stainless Steel Cable	200'/150 lb Stainless Steel Cable	200'/150 lb Stainless Steel Cable	150'/150 lb Stainless Steel Cable	100'/135 lb Stainless Steel Cable	100'/135 lb Stainless Steel Cable
Retrieval Speed	2:1	2:1	2:1	1.5:1	1:1	1:1
Rod Holders	Dual Axis Adjustable (1)	Dual Axis Adjustable (1)	Dual Axis Adjustable (1)	Single Axis Adjustable (1)	Tube Style (1)	Tube Style (Optional)
Mounting Base	Low-Profile Swivel Base	Low-Profile Swivel Base	Universal Base	Universal Base	Tab Lock Base	Clamp Mount Base
Spool	Stainless Steel	Composite	Composite	Composite	Composite	Composite
Boom	Stainless Steel Telescopic (24" to 53")	Stainless Steel Telescopic (24" to 53")	Stainless Steel (24")	Stainless Steel (24")	Composite (18")	Composite (12")
Depth Counter	Analog	Analog	Analog	Analog	Swivel-Head Dial	Swivel-Head Dial
Weight Capacity	20 lb	20 lb	20 lb	12 lb	8 lb	4 lb
Limited Lifetime Warranty	Yes	Yes	Yes	Yes	Yes	Yes
Includes Line Release	Yes (1)	Yes (1)	Yes (1)	Yes (1)	Yes (1)	-
Integrated Ball Storage Hook	Yes	Yes	Yes	-	-	-
One-Hand Clutch Deploy	Yes	Yes	Yes	Yes	Yes	-
Ergonomic Crank Handle	Yes	Yes	Yes	Yes	-	-
Enclosed Boom End	Yes	Yes	Yes	Yes	-	-