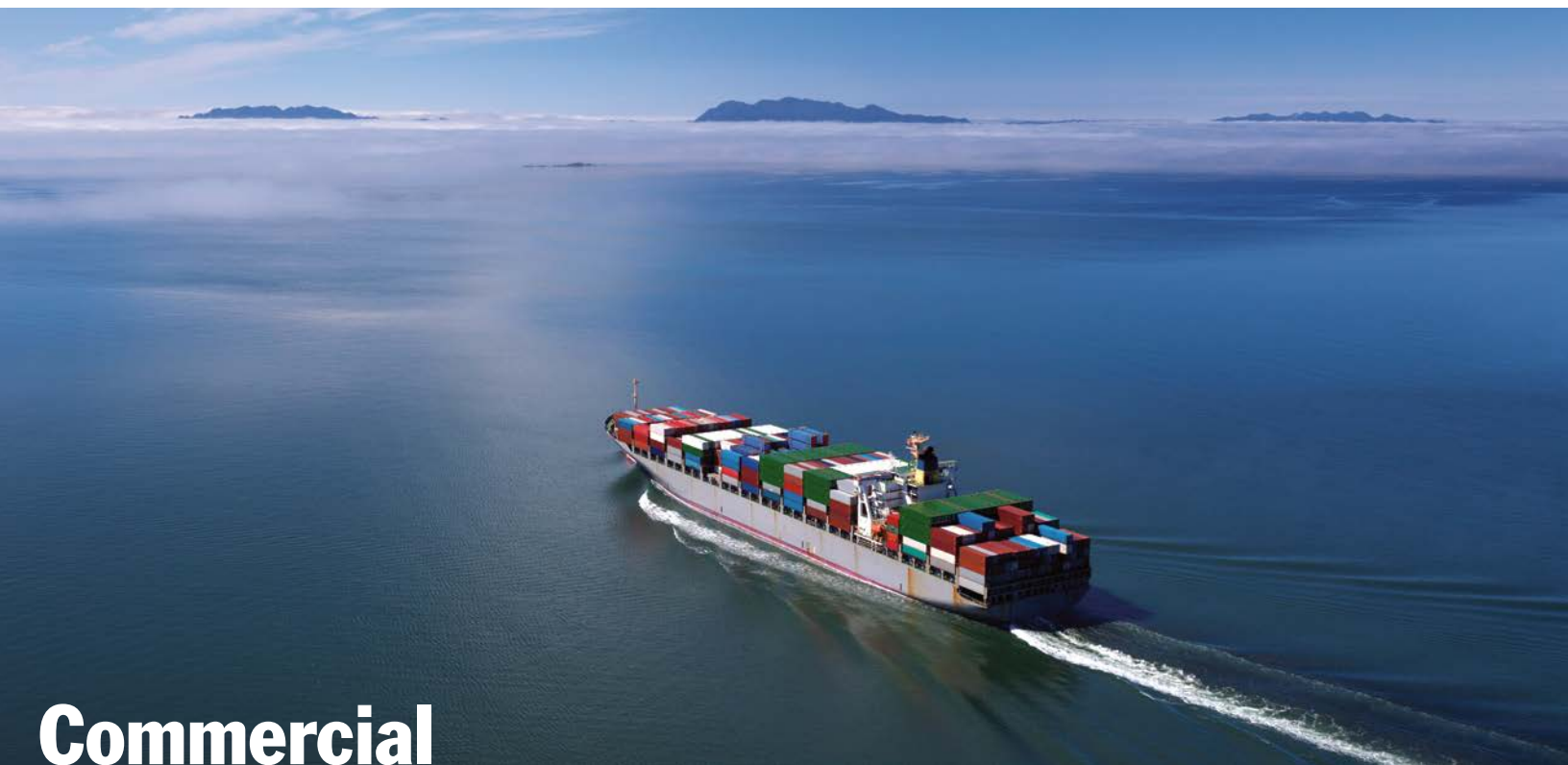




Leisure



Commercial

MARINE PRODUCTS
Full Line Catalog

EXPERIENCE. KNOWLEDGE. QUALITY.



The Shakespeare® Tradition

Shakespeare® is a global antenna brand with a reputation for superior quality, performance and durability. With manufacturing and distribution centers in Asia, North America and Europe, we are positioned to deliver excellent service to our customers worldwide. We have a rich tradition serving both military and civilian maritime customers globally, and we offer our customers high quality products that have been perfected through a strong collaboration with professionals, Navies and Coast Guards since 1952.

Although we are very proud of our premier antenna portfolio, our approach to satisfying customers reaches far beyond antenna design and technology. With unparalleled focus on service and quality, there is simply no reason to look anywhere else for your marine antenna needs.



Shakespeare® Innovation

While we are proud to be the world's leading marine antenna company, we recognize that innovation is necessary to adapt to changing needs in the market. With our new product line expansion into Wi-Fi, Cellular and Multi-Function Antennas, our products will enable you to stay connected to friends and family further offshore than before. Whether you want to check emails, share photos on social media, watch your favorite TV shows, stream movies or just make phone calls to shore, we have the solution for you.

Choose a genuine Shakespeare® product and relax – you've made the right choice.

Table of Contents

New Products	2	Cellular / WiFi Products	39
WebWatch™	2	Phase III™	40
QuickConnect™	3	Galaxy®	41
About The Brands	4	Anywhere by Shakespeare®	42-44
Phase III™	4	Multi-Function Antennas	45
Galaxy®	5	Galaxy®	46
Classic	6	Classic	47-48
AIS Antennas	8	TV / AM / FM / SiriusXM® Antennas	49
Phase III™	10	TV / AM / FM	50
Galaxy®	10	SeaWatch®	50-51
Classic	11-13	AM / FM	52
VHF Antennas	14	Phase III™	52
Boats 14-22 ft (4-7 m)	16	Galaxy®	53
Phase III™	16	Classic	53-55
Galaxy®	16	SiriusXM	56
Classic	17-21	Galaxy®	56
Boats 22+ ft (7+ m)	22	CB / Loran Antennas	57
Phase III™	22	Galaxy®	58
Galaxy®	23-24	Classic	58-59
Classic	25-29	Extension Masts	60
Sailboat	30	Galaxy®	62
Classic	30-32	Classic	63
HF/SSB Antennas	33	Mounts & Hardware	64-69
Phase III™	34	Accessories	70-74
Galaxy®	34-35	Power Supplies	75
Classic	35-38		

NEW Products

WEBwatch™

ANYWHERE
by Shakespeare

WCT-1

WebWatch™ lets you access the internet from a Wi-Fi hotspot or cellular network and share it either wirelessly or via an Ethernet cable to your internet devices onboard. The antenna automatically switches to available Wi-Fi networks to limit data usage on your cellular plan. This innovative entertainment hub also provides free high definition TV signal so that you can watch your favorite TV shows onboard.



 Easy Set Up
  Energy Efficient and Durable
  Increase Reception = MORE BARS
  Global Compatibility

Features:

- Dual antenna design
- Auto switch between Wi-Fi and Cellular
- iOS and Android app, web-based management
- Wi-Fi hotspot or Ethernet port network
- SMS and app reboot function
- High performance CPU and SDRAM
- Single cable for power and TV

Benefits:

- Pick up the best signal with maximum clarity
- Save on data when possible, uninterrupted.
- Device management tools, optimize mobile screen, computer or tablet
- Flexibility to extend Wi-Fi network
- Safely reboot without accessing power supply
- Fast, reliable, and responsive
- Only single cable to be installed if not using LAN



WC-1

You get all the same great features as in the WCT-1 but without the TV functionality.

See page 43.



QUICK CONNECT™

To make it easy and convenient to install/replace your antenna, we designed our QuickConnect™ antenna system with cable attached to the mount instead of the antenna itself. Simply screw on/off the antenna, and enjoy this hassle-free and cost-effective alternative to the traditional antenna installation. The QuickConnect™ products have a 2 year warranty and have the same mounting hole pattern as our standard antenna mounts. Note: When selecting a QuickConnect™ antenna, you must pair it with a QuickConnect™ mount.



 Easy Set Up

 Customizable

 Standardized Mounting

 Global Compatibility

Features:

- QuickConnect™
- High quality connection
- Hanging dust protection cap
- Water protection cap
- Centerpin PL-259-CP-G Connector
- Standard mount design

Benefits:

- Unscrew or screw antenna to disconnect or connect
- No noise generated due to vibrations
- Protect the connector on the mount when antenna is disconnected
- Cap stays fastened to mount to prevent it from getting lost
- Easy Solderless Centerpin Connector
- Upgrade to a high-end Shakespeare antenna without purchasing a new mount

Available Models:

QC-3, QC-4 and QC-8

Mounts (required for installation and operation):

QCM-S, QCM-N, QCM-SR and QCM-NR

See page 29.



We've further improved our super premium Phase III™ antennas by making them easier to install by upgrading the construction with new technology to give you unparalleled performance. The new Phase III™ antennas also have an industry-leading 8 years warranty to give you the peace of mind that no other antenna on the market will last longer. To maximize the performance of your marine radio, and to get peace of mind that your antenna will last for years to come, choose our Phase III™ products.

Quality Conductors

Stranded, high-quality tinned copper inner conductor maximizes signal strength

12-Sided Facet

Indexes and prevents the antenna from rotating during installation

Versatile Stainless Steel Ferrule

Polished to a high luster, our versatile stainless steel ferrule assembly provides installation flexibility

Ethafoam Spacer System

Isolates the radiators from vibration and moisture for long, dependable service

Silver-Plated Elements

All Phase III™ antennas have silver-plated elements for maximum electrical efficiency that actually improves with age

Shakespeare® Fiberglass Radome

For mechanical support, our high-strength fiberglass radomes are unsurpassed in the industry

SO-239 Connector

Remove or install your Phase III™ antenna without re-routing coax

PHASE III™

8 YEAR

WARRANTY



Shakespeare[®] Galaxy[®] Antennas have long been revered as the industry standard for both beauty and performance, with top notch materials and master craftsmanship as the basis for every antenna. Our master craftsmen solder, assemble, tune and finish each antenna by hand, following a 20-plus-year tradition.

Relied upon for high performance and chosen for their extra durable construction, they are also universally admired for their beautiful, distinctive Galaxy[®] finish.

With mirror-polished, stainless steel ferrules, the antennas' pristine white radomes are protected by a proprietary, high-gloss polyurethane that won't fuzz or turn yellow in the sun.



Exclusive white fiberglass seals out moisture to prevent corrosion. Rugged, high-gloss finish assures long-lasting beauty.

Low-loss ethafoam spacer for strong mechanical support.

Low-loss polyethylene dielectric.

Stranded, high-quality tinned copper inner conductor maximizes signal strength.

High-quality brass choking sleeve suppresses cable radiation for maximum on-air signal.

High-quality, brass outer element for maximum efficiency and mechanical strength.

Flexible low-loss coax that has higher power capabilities, less loss per foot, UV stable jacketing, stranded copper core, and a higher concentration of copper shielding to help maximize antenna performance.

Stainless steel ferrule resists corrosion.

GALAXY[®]
5 YEAR
WARRANTY

Classic ANTENNAS



Since the 1970s, Shakespeare® Classic Antennas have been manufactured to provide basic communication and navigation capabilities. The Classic Series covers the widest variety of vessels in the Shakespeare® family. (Classic Series antennas are not recommended for mounting on hard-tops.)



Choosing the Right Antenna

Reliability Begins with Quality Construction

Shakespeare fiberglass antennas are built with precision, beginning with hand-soldered connections, brass and copper elements, strong mechanical joints and superior electronics. The radiator and electrical elements are then encased in our exclusive Shakespeare fiberglass radomes.

Choosing the Proper Antenna

Since many factors influence the selection of the most appropriate antenna for a specific application, we encourage consultation with a local dealer whenever possible. For instances where this is not possible, the following tips should be considered before making a final decision.

Antenna Length

Length is of paramount importance when deciding on an optimal antenna for your vessel. Remember that the higher an antenna is mounted and the further it extends upward, the better signal broadcast and reception will be. That said, be sure to allow adequate lay down room for clearing low bridge of other obstacles.

Gain and Beamwidth

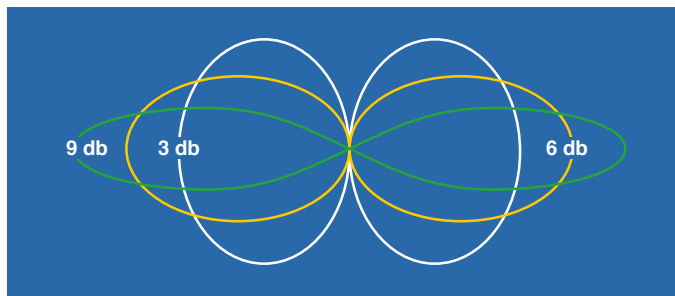
Two key performance parameters for antennas are gain and beamwidth.

Gain

Gain is a measure of how much of the input power is concentrated in a particular direction, expressed with reference to an antenna radiating in all directions equally at the same power level, stated in decibels (dB). Generally, the higher the gain, the greater the communication range.

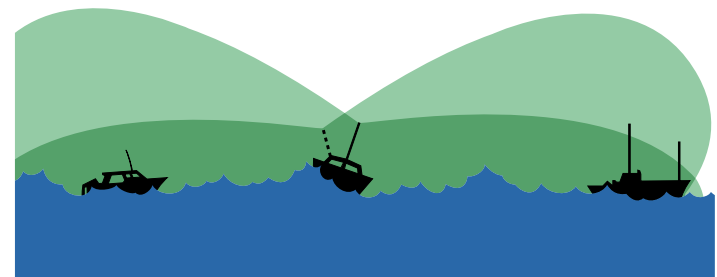
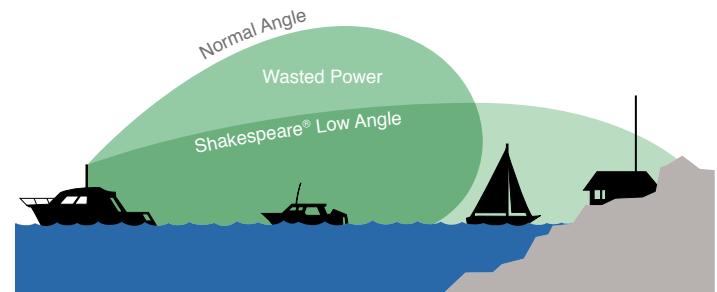
Beamwidth

Beamwidth, in generalized terms, is the angular separation between the half power points on an antenna's radiation pattern. The relationship between gain and beamwidth is important when selecting an appropriate antenna. As gain increases, beamwidth is compressed or narrowed. A narrow beam can cause fading in rough or rolling seas. Small, lightweight boats, which tend to roll excessively in heavy seas, normally do not use an antenna with a gain rating higher than 6dB. Larger or more stable vessels can use higher gain antennas effectively.



Low Angle Radiation

Shakespeare helped boaters manage the gain vs. beamwidth compromise by pioneering low angle radiation techniques in the 1960's, and incorporating this technology into our line of marine antennas. Low angle minimizes fading while maximizing range, even during excessive boat roll in turbulent seas. A normal angle does not offer as much range and wastes power in non-effective areas.



Mounting your antenna

Mounts

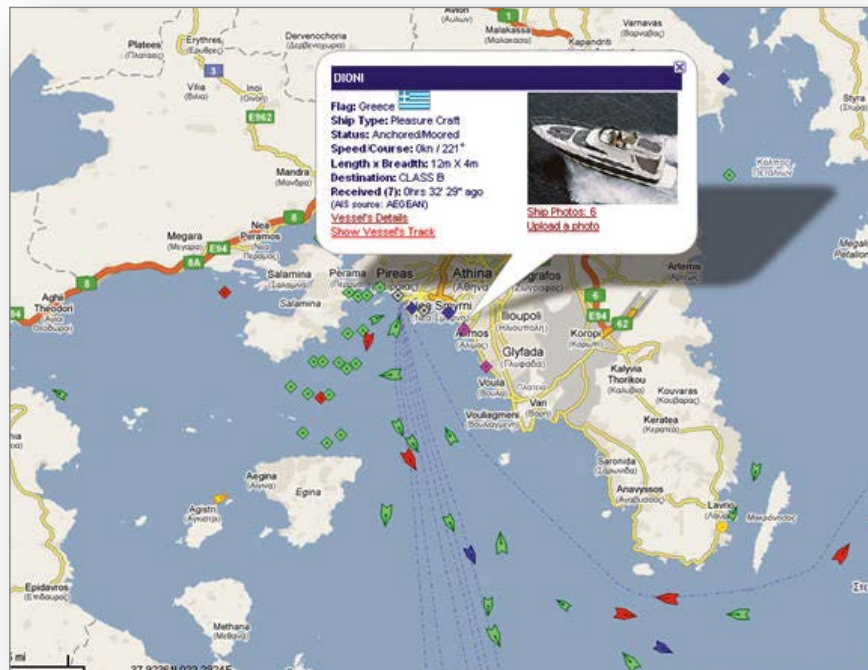
Choosing the right antenna mount is equally as important as selecting the right antenna to ensure reliable communications, and to avoid damage to either the antenna and/or the vessel. Select a mount style designed for the installation location and method that works best for your particular boat. Remember to account for lay down room to clear bridges, overpasses and other obstacles. When using a two-piece antenna greater than 10' in length, and upper support clamp should also be installed. For antennas of 14'-18', the upper clamp should be 3' to 5' from the base of the antenna. For antennas of 18' to 23', the upper clamp should be 4' to 8' from the base. Positioning the upper clamp to high or too low will significantly increase the potential for structural failure. Shakespeare quality mounts are designed and tested to compliment and support our antennas in a wide variety of applications.

Cable

RG-58 cable is sufficient for cable runs up to 20'. For longer runs, RG-8X, RG-8A/U, or RG-213 are better choices offering thicker and more robust jacketing and better efficiency. Shakespeare uses low-loss RG-8X throughout its Galaxy® antenna line. For optimum performance from your VHF, HF/SSB and cellular communication systems, the cable should be kept as short as possible. Shakespeare offers a full line of field-installable connectors that enable a custom and optimized installation on your vessel. Be sure to thoroughly review all Shakespeare antenna instructions sheets, as some cables supplied with some antennas may not be cut or altered.

Automatic identification systems (AIS) are used to automatically identify and track ships and other watercraft by electronically exchanging data with other ships, AIS base stations and satellites. This technology is used for collision avoidance, fishing fleet monitoring and control, vessel traffic services, maritime security, search and rescue, etc. Recent amendments to the U.S. Coast Guard's (USCG) AIS code require vessels of various sizes operating in or visiting U.S. waters to be outfitted with a USCG type-approved and properly installed operational AIS no later than March 1st, 2016.

Selecting a quality Shakespeare® Marine AIS antenna for your AIS system will ensure compliance to the USCG AIS code, and our AIS antennas are available in various styles and sizes to match our other VHF-style antennas. Reach and antenna mounting guidelines for AIS antennas are very similar to a traditional VHF antennas: Tall AIS antennas mounted on larger ships can provide an effective range of about 60 nautical miles (111 Km) when paired with an appropriate AIS system, while smaller antennas mounted on small vessels can extend effective communication to roughly 5 nautical miles (9 Km).



AIS Antennas

Shakespeare®

MARINE - RULE THE WAVES

AIS ANTENNAS





PHASE III™

6396-AIS 4' (1.2m) AIS/VHF 3dB Gain

Specially engineered for the extra bandwidth required by AIS transceivers, this Phase III™ antenna enables reliable communication over marine VHF frequencies. The foam-filled radome and silver-plated elements enhance the antenna's technical performance and longevity to meet your needs.

- Silver-plated outer conductor, copper inner conductor
- Stainless steel mounting sleeve
- Type "N" connector inside mounting sleeve for easy mounting and dismounting for stowage
- Suggested mount: Shakespeare® Style 4187-HD Ratchet Mount

Max. Power Input: 50 watts

SWR: Less than 1.5:1 at 162 MHz

Bandwidth: 5 MHz within 2.0:1 VSWR

Frequency: VHF AIS Marine Band



GALAXY®

5396-AIS Little Giant™ 4' (1.2m) AIS/VHF 3dB Gain

Cruise with confidence and communicate reliably over the VHF band waves using the Galaxy® 5396-AIS Little Giant™. Specifically designed to meet the broader bandwidth requirements of all popular AIS transceivers, this antenna features a commercial-grade fiberglass construction to ensure performance and durability. These benefits combined with the great look of our Galaxy® high-gloss finish signifies a standard of quality to be admired.

- Brass and copper elements
- High-gloss, non-yellowing polyurethane finish
- Stainless steel ferrule with 1"-14 thread
- Includes 20' RG-8/X low-loss cable plus a PL-259 connector
- Suggested mount: Style 4187 or 5187

Max. Power Input: 50 watts

SWR: Less than 1.5:1 at 158 MHz

Bandwidth: 5 MHz within 2.0:1 VSWR

Frequency: VHF AIS Marine Band





Classic

396-1-AIS 4' (1.2m) VHF AIS 3dB Gain

Designed to meet the broader bandwidth requirements of all popular AIS transceivers, commercial-grade construction of this 4' broadband antenna is complete with a mast mounting sleeve. Brass and copper elements sealed within the durable, fiberglass radome enhance quality transmissions.

- Brass and copper elements
- SO-239 connector at the base
- Suggested Mount: U-Bolts included; or use optional 4715 mounting clamps – see page 55
- Coax cable sold separately

Max. Power Input: 50 watts

SWR Nominally: 1.5:1 at 158 MHz

Bandwidth: 6 MHz within 2.0:1 VSWR

Frequency: VHF AIS Marine Band



Classic

AIS-COM 5.4' (1.65m) AIS Band 3dB Gain Commercial AIS antenna



Heavy-duty, mast mount, white fiberglass dipole AIS antenna. Specially designed AIS antenna ideal for the extreme conditions found on fishing vessels in the North Sea type environment and on dhows in the Indian Ocean. Aluminum and copper elements for improved performance. Supplied with extra heavy-duty galvanized 4715 steel clamp set for mast mount. 1m RG-213 with N connector.

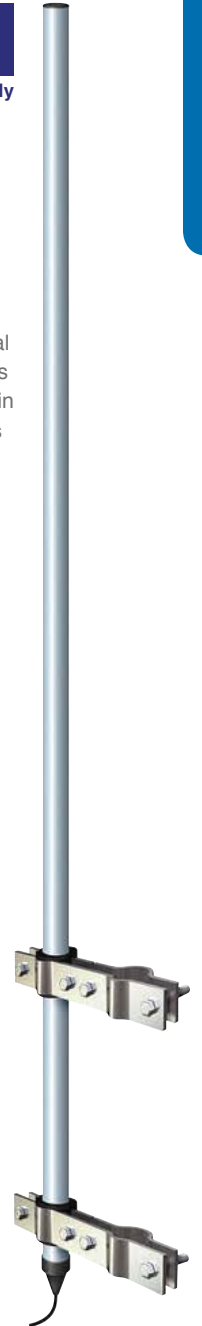
- High grade aluminum elements
- Mounting sleeve
- Type "N" connector inside mounting sleeve
- 4715 mount included
- One section: 1.65m

Max. Power Input: 100 watts

SWR Nominally: 1.5:1 161.5 MHz

Bandwidth: 5 MHz within 2.0:1 VSWR

Frequency: AIS Marine Band



AIS ANTENNAS



★★★ (Short Range)

Classic



HA156C-AIS Heliflex Stub Antenna

Lightweight, low windage, compact helical VHF antenna for short range communications. A favorite for racing yachts and sports boats. Integral aluminum masthead mounting bracket. 20m of RG-58 cable and PL-259 connector.



★★★★

Classic



AIS-MAST 3' (0.9m) VHF/AIS Marine Band 3dB Gain

Heavy-duty stainless steel whip AIS antenna. Ideal for sail and power boats to withstand the most rugged conditions. Watertight, strong, lightweight (0.2 kg) construction. Matches YWX (VHF). 20m RG-58 cable plus PL-259 connector and 180mm nylon cranked bracket.



★★★ (Short Range)

Classic



MD23-AIS Heliflex Stub Antenna

Extra heavy-duty helical AIS antenna for short range communications. Ideal for sail and power boats to withstand the most rugged conditions. Watertight, strong, lightweight (0.3 kg) construction. Electronics are sealed in epoxy for additional protection.

MD23-AIS: supplied with 20m RG-58 cable plus PL-259 connector and 180mm aluminum bracket

MD23-N-AIS: fitted with 'N' connector to allow detachable cable. (Bracket not included)

Packed in poly bag



★★★★

Classic

5215-AIS 3' (0.9m) VHF/AIS Marine Band 3dB Gain

Communication performance over VHF marine frequencies is optimized with the master craftsmanship of this Classic 5215-VHF/AIS, built with extra bandwidth for all popular AIS transceivers. The lightweight, low-profile, stainless steel VHF antenna stands at 3' tall and is designed for masthead mounting to enhance transmission quality.

- Designed specifically for AIS transceivers
- Sealed, tin-plated copper wire coil
- Stainless steel body and 36" whip
- SO-239 connector
- Mount: Stainless steel "L" bracket supplied

Max. Power Input: 50 watts

SWR Nominally: 1.5:1 at 162 MHz

Bandwidth: 7 MHz within 2.0:1 VSWR

Frequency: VHF AIS Marine Band





Classic

5250-AIS

3' (0.9m) VHF Marine Band 3dB Gain

Shakespeare's master craftsmanship enables the creation of VHF antennas to accommodate any size vessel. The compact size and light weight of the Classic 5250-VHF/AIS, complete with a sealed, tin-plated copper wire coil, is ideal for marine vessels with limited space, such as bass boats and center console fishing vessels.

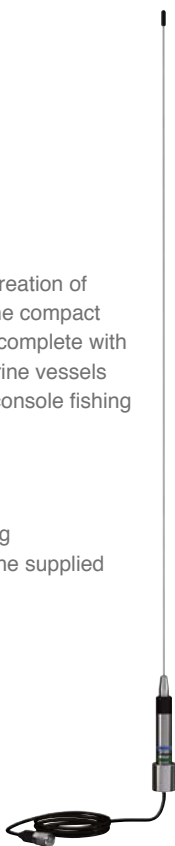
- Stainless steel whip (36")
- Sealed, tin-plated copper wire coil
- Chrome plated brass canister minimizes de-tuning
- Requires mount with center hole for passage of the supplied cable
- 15' RG-58 cable and PL-259 connector included
- Suggested mount: Style 4187, 5187, 4188-S, or 4190 Ratchet Mounts

Max. Power Input: 50 watts

SWR Nominally: 1.5:1 at 156.8 MHz

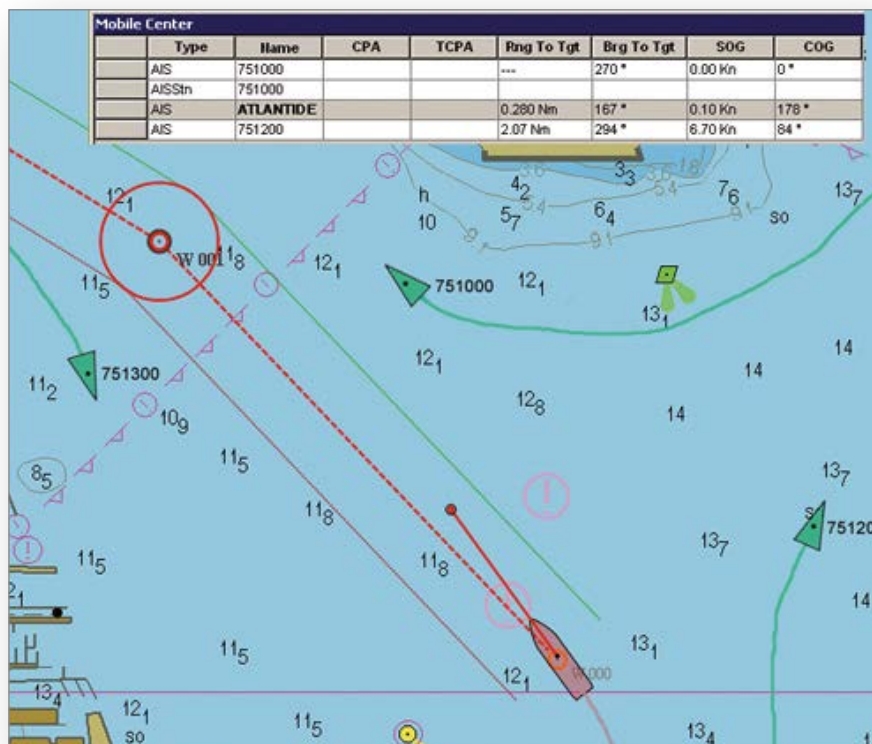
Bandwidth: 7 MHz within 2.0:1 VSWR

Frequency: VHF Marine Band



Why 2 Stars?

Although all Shakespeare antennas are made with the highest quality standards, those rated as two stars reflect a decrease in range as compared to other Classic series antennas.



A marine radio is only as good as its antenna, so it is very important to select an antenna that will maximize the performance of your marine radio. Although our Classic antennas have a 2 year warranty and are designed to provide good performance, we highly recommend selecting antennas from our Galaxy® or Phase III™ series for better signal quality, range, and longevity.



VHF Antennas



VHF ANTENNAS



PHASE III™

6400-R

4' (1.2m) VHF Marine Band 3dB Gain

Collinear-Phased 5/8 Wave Elements

This high performing, 4' VHF antenna is infused with the quality of our incomparable Phase III™ electronic elements. The commercial grade antenna is great for hardtops, T-tops and other locations aloft where the compact size can deliver reliable communications via VHF radios. The master craftsmanship of the ethafoam spacer system radome positions this antenna within our finest line.

- Silver-plated outer conductor, copper inner conductor
- Stainless steel mounting sleeve
- Type "N" connector inside mounting sleeve for easy mounting and dismounting for stowage
- Suggested mount: Shakespeare® Style 4187-HD Ratchet Mount

Max. Power Input: 150 watts

SWR: Less than 1.5:1 at 156.8 MHz

Bandwidth: 3 MHz within 2.0:1 VSWR

Frequency: VHF Marine Band



GALAXY®

5400-XT Little Giant™

4' (1.2m) VHF Marine Band 3dB Gain

Built by master craftsmen, the heavy-duty construction of this 4' Shakespeare® antenna delivers exceptional performance for VHF communications. The small size of this antenna makes it ideal on T-tops, hardtops and other positions aloft where it can deliver maximum range. Exemplifying the same luxury other Galaxy® Series antennas emanate, this Little Giant™ looks sleek in an exclusive black Galaxy® finish.

- Brass and copper elements to maximize range and efficiency
- Stainless steel ferrule with standard 1"-14 thread
- Includes 20' RG-8/X low-loss cable plus a PL-259 connector
- Suggested mount: Style 4187 or 5187

Max. Power Input: 50 watts

SWR: Less than 1.5:1 at 156.8 MHz

Bandwidth: 5 MHz within 2.0:1 VSWR

Frequency: VHF Marine Band



5401-XT Little Giant™

4' (1.2m) VHF Marine Band 3dB Gain

Same as 5400-XT except with a black finish.

5400-XP

4' (1.2m) VHF Marine Band 3dB Gain

Same as the 5400-XT, but with these enhanced features:

- Copper and silver-plated brass elements for maximum range and efficiency
- High-gloss, non-yellowing polyurethane finish



Europe Only





Classic

5104

4' (1.2m) VHF Marine Band 3dB Gain

High-value quality is evident in this hand crafted, hand assembled and hand finished Shakespeare® antenna. The durability and performance of the Centennial® 5104 is met with the best of our high-end features, creating a luxurious looking digital antenna with an attractive value to match.

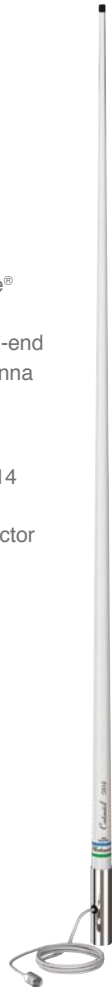
- Brass and copper elements
- Chrome-plated brass ferrule with standard 1"-14 thread
- Includes 15' RG-58 cable and a PL-259 connector
- Suggested mount: Style 4187, 5187 Ratchet Mounts

Max. Power Input: 50 watts

SWR Nominally: 1.5:1 at 156.8 MHz

Bandwidth: 5 MHz within 2.0:1 VSWR

Frequency: VHF Marine Band



Classic

420

5' (1.5m) VHF Marine Band 3dB Gain

One of Shakespeare's most economical and value-packed VHF antennas, the Classic 420 is ideal for day-to-day cruising in calm to moderate seas. This 5' digital antenna is complete with an integral polycarbonate Lift-n-Lay mount for deck mounting as well as a leveling plate and installation hardware. The brass and copper elements offer optimized performance while surrounded by a durable radome.

- Brass and copper elements
- Leveling plate and mounting hardware included

Max. Power Input: 50 watts

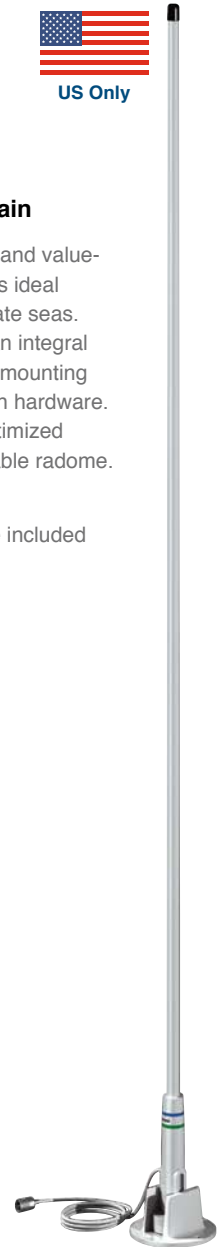
SWR Nominally: 1.5:1 at 156.8 MHz

Bandwidth: 5 MHz within 2.0:1 VSWR

Frequency: VHF Marine Band



US Only



VHF ANTENNAS

Tech Tips

- All Shakespeare® VHF marine antenna cables can be shortened or lengthened with proper connectors, but this is not the case for most CB marine antennas. CB antennas comprise of a tuned system and should not have cables altered or connectors removed.
- Always match the mount's material to the antenna ferrule's material.
- For a cleaner look, route the cable out the bottom of the antenna and through the top center hole of the antenna mount if available.





Classic

5241-R
3' (0.9m) VHF Marine Band 3dB Gain

Shakespeare® engineers constantly push the limits to succeed and conquer innovative antennas that fit the varying, yet specific needs of boaters. The Classic 5241-R VHF antenna fulfills the need of bass boats, center console fishing boats, or any vessels where compact size is most important. Measuring in at 3', the sealed, tin-plated copper wire coil delivers quality performance while the heavy-duty stainless steel whip maintains extra stability at high speeds.

- Sealed, tin-plated copper wire coil
- Chrome plated brass canister minimizes de-tuning
- Stainless steel whip (36")
- Requires mount with center hole for passage of the supplied cable
- 15' RG-58 coax cable and a PL-259 connector included
- Suggested mount: Style 4187, 5187, 4188-S, or 4190 Ratchet Mounts

Max. Power Input: 50 watts
SWR Nominally: 1.5:1 at 156.8 MHz
Bandwidth: 7 MHz within 2.0:1 VSWR
Frequency: VHF Marine Band



Classic

396-1
5' (1.5m) VHF Marine Band 3dB Gain

Shakespeare® antennas are trusted by boaters worldwide, including the Coast Guard. We manufacture innovation, performance and reliability with a high build quality. Designed to reduce signal fading in rough seas using brass and copper elements, this basic 5' VHF antenna is virtually the most widely used antenna on Coast Guard vessels.

- Brass and copper elements
- Chrome-plated brass ferrule with standard 1"-14 thread
- Includes 15' RG-58 cable and a PL-259 connector
- Suggested mount: Style 4187 or 5187 Ratchet Mounts

Max. Power Input: 50 watts
SWR Nominally: 1.5:1 at 156.8 MHz
Bandwidth: 5 MHz within 2.0:1 VSWR
Frequency: VHF Marine Band



US Only



Classic

5247-A-D
36" VHF Marine Band 3db Gain

Low Profile with Heavy-Duty Lift-N-Lay Whip

The style 5247-A-D is a 3db base load antenna with a three-foot, extra heavy-duty, stainless steel whip that Lifts-N-Lays down so that it is out of the way for fishing, trailering, boat covers or storage. The Lift-N-Lay feature makes the antenna extra easy to set up and lay down. Superb value, performance and convenience. A right-angle "L" bracket is included for side mounting.

- Sealed copper wire coil
- 36" extra heavy-duty stainless steel whip minimizes flexing at high speeds
- SO-239 connector
- "L" bracket included for mounting to a vertical surface
- Coax and PL-259 connector sold separately
- One section

Max. Power Input: 50 watts
SWR Nominally: 1.5:1 at 156.8 MHz
Bandwidth: 7 MHz within 2.0:1 VSWR
Frequency: VHF Marine Band



The Lift-n-Lay whip feature makes it easy to lay this antenna down and out of the way.



Europe Only



Classic



US Only



5242-A
3' (0.9) VHF Marine Band 3dB Gain

While we manufacture our antennas to perform at the highest level, we also design with our boaters in mind. With a convenient press-and-twist bayonet fitting, attaching or removing the stainless steel whip from this VHF antenna is quick and easy. The bayonet has been re-designed and improved for extra convenience.

- Stainless steel whip (36in)
- Whip is user replaceable.
- SO-239 connector
- "L" shaped bracket included for mounting to a vertical surface
- Coax and PL-259 connector sold separately
- One section

Max. Power Input: 50 watts
SWR Nominally: 1.5:1 at 156.8 MHz
Bandwidth: 7 MHz within 2.0:1 VSWR
Frequency: VHF Marine Band



★★★ (Short Range)

Classic

5912
7" (18cm) VHF Marine Band Unity Gain

Communicate reliably and concisely over VHF radio with our 7" Classic 5912, designed specifically for small boat applications needing only short-range communications. The compact, lightweight and space-saving antenna includes a Flush Mounting Kit with gold-plated connectors to ensure low-loss performance, also making attaches and detaches a quick and easy process.

- Space-saving design
- Quick, easy setup
- Gold-plated Flush Mounting Kit included

Max. Power Input: 25 watts

Bandwidth: N/A

Frequency: VHF Marine Band



★★★ (Short Range)

Classic

5911 The Stowaway™
10" (25cm) VHF Marine Band Unity Gain

Emergencies on the water can happen at any time, especially when your main VHF antenna is broken or disabled. The Stowaway™ can serve as a reliable VHF emergency backup and comes packed in a 12" weather-resistant, plastic tube which can "stow away" in an easy-to-reach location. Complete with 12' cable, connector, and rubber suction cup for fast, easy mounting to any smooth horizontal surface, this 10" VHF antenna is a boater's survival kit must-have.

- Flexible vinyl outer covering
- 10" overall length
- Velcro strips for storage included

Max. Power Input: 25 watts

Bandwidth: N/A

Frequency: VHF Marine Band



★★★ (Short Range)

Classic

HA156C
Heliflex Stub Antenna

This popular masthead antenna is perfect for race boats or for sailors who want an antenna with the lowest possible windage. The Heliflex performed very well in an independent test conducted by *Sailing Today* and their conclusion was: *It actually performed very well and almost managed to hold its own against the other whip antennas.* This antenna is frequently specified for original equipment by leading sail boat makers and it is presented in an attractive blister pack.

- Low windage antenna for race yachts
- Ultra lightweight
- Helical construction
- Unobtrusive
- Integral aluminium masthead fitting plus 20m of RG58 cable
- PL-259 plug
- Does not require ground plane
- Blister packed

Frequency: 156-162 MHz VHF marine band

Gain: Unity Gain

V.S.W.R.: <1.5:1 at resonance

Length: 0.15 m

Weight: 0.05 kg



Europe Only



★★★

Classic

SL156C
Emergency VHF Antenna

Shorelink Emergency Antenna

- Sealed in waterproof container
- Stored easily on bulkhead or in flare pack
- 6m of miniature co-axial cable (RG174) with PL259 plug fitted
- Compulsory for R.O.R.C. racing
- Blister packed
- Available in EU only



Europe Only



Why 2 Stars?

Although all Shakespeare antennas are made with the highest quality standards, those rated as two stars reflect a decrease in range as compared to other Classic series antennas.





Classic



MD20

3' (0.9m) VHF Marine Band 3dB Gain

Heavy-duty stainless steel whip VHF antenna. Ideal for sail and power boats to withstand the most rugged conditions. Watertight, strong, lightweight (0.2 kg) construction. Electronics are sealed in epoxy for additional protection.

MD20: supplied with 20m RG-58 cable plus PL-259 connector and 180mm aluminum cranked bracket.

Packed in clear poly bag.



MD20N

Same as MD20 but fitted with "N" Connector

Fitted with 'N' connector to allow detachable cable. (Bracket not included).

Packed in clear poly bag.



Classic



427-N

5' (1.52m) VHF Marine Band 3dB Gain

Durable, smooth gloss finished, white fiberglass VHF antenna. Very good value, this antenna is ideal for power and work boats. Brass and copper elements for extra performance. Includes 6m RG-58 cable and PL-259 connector (not attached). Matches 5350-N (MD-24).

Suggested mounts: 4186, 4721 or 495-B



VHF ANTENNAS



Classic

427-N-KIT

5' (1.52m) VHF Marine Band 3dB Gain

Durable, smooth gloss finished, white fiberglass VHF antenna. Very good value, this antenna is ideal for power and work boats. Brass and copper elements for extra performance. Includes 6m RG-58 cable and PL-259 connector (not attached). Matches 5350-N (MD-24).

Includes 4186 mount.



Classic

427-S

5' (1.52m) VHF Marine Band 3dB Gain

Durable, smooth gloss finished, white fiberglass VHF antenna. A very good looking antenna, ideal for power and work boats. Brass and copper elements for extra performance. Includes 6m RG-58 cable and PL-259 connector (not attached). Matches 5350-S (MD-24SS) AM/FM antenna. Suggested mounts: 4187 or 5187.





Classic



Europe Only

426-N

5' (1.52m) VHF Marine Band 3dB Gain

White fiberglass VHF antenna. Designed for high speed sports boats and RIBs working in rough conditions. Quality copper cable elements for good range and efficiency. Includes 4.5m RG-58 cable and PL-259 connector (not attached). Suggested mounts: 4186, 4721 or 4722.



Classic



Europe Only

YRR

2' (0.61m) VHF Marine Band Unity Gain

Black, stainless steel VHF antenna for short range communications.

Designed to avoid snagging and excessive whip action, ideal for RIBs and high speed craft. Solderless connector system for ease of installation and removal. Integral bracket with mounting holes. 8m of RG-58 cable with PL-259 connector



YRR-W

Same as YRR but in white

White, stainless steel VHF antenna for short range communications



VHF ANTENNAS





PHASE III™

6225-R 8' (2.4m) VHF Marine Band 6dB Gain

Built for performance and durability, this flagship Phase III™ VHF antenna will stand strong against high speeds and high winds. Combining our innovative construction of a ethafoam spacer system radome with a sleek and luxurious appearance, this antenna is a master of VHF communication.

- Silver-plated outer conductor, copper inner conductor
- Stainless steel mounting sleeve
- SO-239 connector inside mounting sleeve for easy mounting and dismounting for stowage
- Suggested mount: Shakespeare® Style 4187-HD Ratchet Mount

Max. Power Input: 150 watts
SWR: Less than 1.5:1 at 156.8 MHz
Bandwith: 3 MHz within 2.0:1 VSWR
Frequency: VHF Marine Band



PHASE III™

6018-R 17' 6" (5.3m) VHF Marine Band 9dB Gain

Good communication over the VHF Marine Band depends on antenna height, quality and dB Gain. This high performing Phase III™ marine antenna is a powerhouse providing all of those necessities in our rugged, high-strength, ethafoam spacer system fiberglass radome for stability in high seas, high winds and high speeds.

- Silver-plated outer conductor, copper inner conductor
- Stainless steel mounting sleeve
- SO-239 connector inside mounting sleeve for easy mounting and dismounting for stowage
- Suggested mount: Shakespeare® Style 409-R or 410-R Mounting Kit
- Two sections: Base 110" (2.8m), Tip 110" (2.8m)

Max. Power Input: 150 watts
SWR: Less than 1.5:1 at 156.8 MHz
Bandwidth: 3 MHz within 2.0:1 VSWR
Frequency: VHF Marine Band





GALAXY®

5225-XT

**8' (2.4m) VHF Marine Band
6dB Gain**

Embodying Shakespeare's extreme durability standards, the Galaxy® 5225-XT is built extra-tough with a stronger, stiffer radome. The extra resistant construction of this VHF antenna undergoes stringent in-house testing to withstand Mother Nature's tests when placed on hardtops, T-tops, radar arches, or anywhere exposed to high winds and high speeds. The high performance and durability of this digital antenna maximizes range all while keeping its pristine white finish.

- Brass and copper elements for maximum range and efficiency
- High-gloss, non-yellowing polyurethane finish
- Stainless steel ferrule with standard 1"-14 thread
- Includes 20' RG-8/X low-loss cable plus a PL-259 connector
- Suggested mount: Style 4187 or 5187

Twinn to: Galaxy® Style 5223-XT, 5237-XT, 5235-XT

Max. Power Input: 100 watts

SWR: Nominally 1.5:1 at 156.8 MHz

Bandwidth: 6 MHz within 2.0:1 VSWR

Frequency: VHF Marine Band



5226-XT

**8' (2.4m) VHF Marine Band
6dB Gain**

Same as the 5225-XT, but with the exclusive Galaxy® high-gloss black finish.



5225-XP

8' (2.4m) VHF Marine Band 6dB Gain

Same as the 5225-XT, but with these enhanced features:

- Copper and silver-plated brass elements for maximum range and efficiency
- High-gloss, non-yellowing polyurethane finish



Europe Only



GALAXY®

5399

9' 6" (2.9m) VHF Marine Band 6dB Gain

Hand soldered, hand assembled and hand finished, the Galaxy® 5399 possesses the quality and high performance expected of a Shakespeare® antenna. The strength and durability of this 9' 6" VHF antenna enables it to be self-supporting, even in high winds and high speeds. (Not recommended for self-supported mounting on T-tops or radar arches, due to limitations of the mount and mounting surface.)

- Brass and copper elements for maximum range and efficiency
- High-gloss, non-yellowing polyurethane finish
- Stainless steel ferrule with standard 1"-14 thread
- Includes 20' RG-8/X low-loss cable plus a PL-259 connector
- Suggested mount: Use only Shakespeare's extra heavy-duty Style 4187-HD Ratchet Mount for self-supporting applications, or use a Style 409-R or 410-R mounting kit for installation with an upper support bracket.
- Two sections: Base 75", Tip 39" - UPS shippable

Max. Power Input: 100 watts

SWR: Nominally 1.5:1 at 156.8 MHz

Bandwidth: 3 MHz within 2.0:1 VSWR

Frequency: VHF Marine Band



VHF ANTENNAS



★★★★★
GALAXY®

5309-R
23' (7m) VHF Marine Band 9dB Gain

The renowned experience and innovative standards of our Shakespeare® engineers are put to the test with this 23' VHF antenna. The quality and high performance of the Galaxy® 5309-R exemplifies our success, producing the clearest possible transmission and reception over the longest range on VHF radio. It sounds as good as it looks.

- Brass and copper elements
- High-gloss, non-yellowing polyurethane finish
- Stainless steel ferrule with standard 1"-14 thread
- Includes 20' RG-8/X low-loss cable plus a PL-259 connector
- Suggested Mount: Shakespeare® Style 409-R or 410-R Mounting Kit (each sold separately - pictured mount not included)
- Two sections: Base 172", Tip 105"
- Twin to: Galaxy® Style 5310-R HF/SSB

Max. Power Input: 150 watts
SWR: Nominally 1.5:1 at 156.8 MHz
Bandwidth: 3 MHz within 2.0:1 VSWR
Frequency: VHF Marine Band



★★★★★
GALAXY®

5230
14' (4.3m) VHF Marine Band 8dB Gain

Our high performance quality is unveiled in this 14' VHF antenna, revealing the most effective 8dB antenna system available anywhere. Not only is this one of the best digital antennas for increased signal capture area, but it maximizes range in style.

- Brass and copper elements for maximum range and efficiency
- High-gloss, non-yellowing polyurethane finish
- Stainless steel ferrule with standard 1"-14 thread
- Includes 20' RG-8/X low-loss cable plus a PL-259 connector
- Suggested mount: Shakespeare® Style 409-R or 410-R Mounting Kit
- Two sections: Base 94", Tip 74" - UPS shippable

Max. Power Input: 200 watts
SWR: Nominally 1.5:1 at 156.8 MHz
Bandwidth: 3 MHz within 2.0:1 VSWR
Frequency: VHF Marine Band



★★★★★
GALAXY®

5018
17' 6" (5.3m) VHF Marine Band 9dB Gain

Reliable communication over VHF radio is imperative when far offshore. The highly sophisticated design and craftsmanship of this antenna enable long distance communication when you need it most. Extra rugged for salt water durability and stability in high seas, surprising light weight and a signature Galaxy® high-gloss finish are all Shakespeare® benefits you can count on.

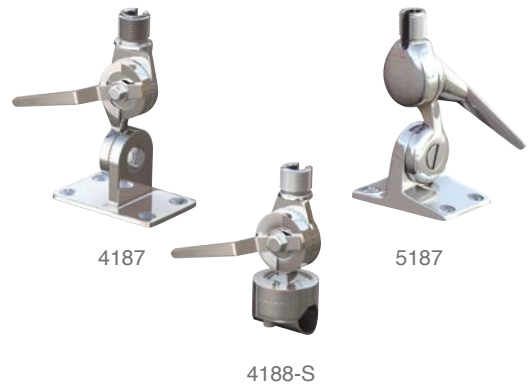
- Brass and copper elements for maximum range and efficiency
- High-gloss, non-yellowing polyurethane finish
- Stainless steel ferrule with standard 1"-14 thread
- Includes 20' RG-8/X low-loss cable plus a PL-259 connector
- Twin to: Style 5390 HF/SSB antenna
- Suggested Mount: Shakespeare® Style 409-R or 410-R Mounting Kit (sold separately - pictured mount not included)
- Two sections: Base 105", Tip 105" - UPS shippable

Max. Power Input: 150 watts
SWR: Nominally 1.5:1 at 156.8 MHz
Bandwidth: 3 MHz within 2.0:1 VSWR
Frequency: VHF Marine Band



Mounts & Accessories

Shakespeare® carries a full line of mounts and accessories. See page 66.





Classic

5101

8' (2.4m) VHF Marine Band 6dB Gain

Holding strong to the values of our high-end features, this 8' VHF antenna is a value pack of Shakespeare's durability, quality and performance. The pristine white radome coated in a gloss finish ensures lasting beauty while protecting the brass and copper elements that provide the range you need in a marine antenna.

- Brass and copper elements
- Chrome-plated brass ferrule with standard 1"-14 thread
- Includes 15' RG-58 cable and a PL-259 connector
- Suggested mount: Style 4187, 5187 Ratchet Mounts, or use a 410-R Mounting Kit plus a Style 4008 Extension Mast to form a 16' antenna system

Max. Power Input: 50 watts
SWR Nominally: 1.5:1 at 156.8 MHz
Bandwidth: 5 MHz within 2.0:1 VSWR
Frequency: VHF Marine Band



5101-S

Same as 5101 but with stainless steel ferrule



Classic

399-1M

9'6" VHF 6dB Gain

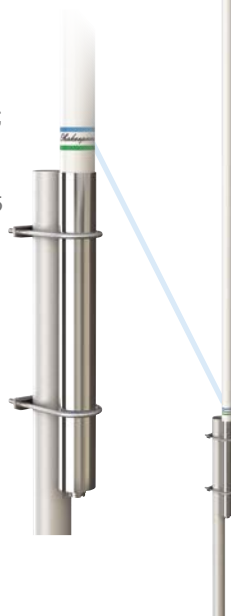
Same as the 399-1, but with a special aluminum sleeve for mast mounting.

- SO-239 connector at the base
- Suggested mount: 1 1/4" U-bolts are supplied; The 399-1M can be strapped to a larger mast using steel banding (not supplied); or use optional 4715 mounting clamps – see page 55

Max. Power Input: 100 watts
SWR Nominally: 1.5:1 at 156.8 MHz
Bandwidth: 5 MHz within 2.0:1 VSWR
Frequency: VHF Marine Band



All fiberglass should be even with or above the mast.



Classic

5206-N

8' (2.4m) VHF Marine Band 6dB Gain

The Classic 5206-C is an economical alternative to our high-end series antennas while maintaining the durability, reliability and quality boaters trust. This 8' VHF antenna is lightweight, self-supporting and utilizes copper cable elements to deliver quality communications where range is not the predominant factor.

- Not for T-tops
- Quality copper cable elements
- Nylon ferrule with standard 1"-14 thread
- Includes 15' RG-58 cable and a PL-259 connector
- Suggested mount: Style 4187 or 5187 Ratchet Mounts
- Twin to: Styles 5205 and 5207 CB antennas

Max. Power Input: 50 watts
SWR Nominally: 1.5:1 at 156.8 MHz
Bandwidth: 3 MHz within 2.0:1 VSWR
Frequency: VHF Marine Band



5206-C
Same as 5206-N but with chrome brass ferrule



VHF ANTENNAS





Classic

4018

19' (5.8m) VHF Marine Band 9dB Gain

Despite the exceptional light weight of this long-distance VHF antenna, quality build and rigidity enable it to uphold an erect position in rough seas. This level of durability and performance, along with the lasting beauty of the pristine white radome, make the Classic 4018 the top choice for charter boat captains and experienced sport fishing enthusiasts.

- Brass and copper elements
- Chrome-plated brass ferrules
- Includes 20' RG-58 cable and a PL-259 connector
- Suggested mount: Style 409-R or 410-R Mounting Kit
- Two sections: Base 162" (4.1m), Tip 66" (1.7m)

Max. Power Input: 50 watts

SWR Nominally: 1.5:1 at 156.8 MHz

Bandwidth: 3 MHz within 2.0:1 VSWR

Frequency: VHF Marine Band



Support bracket should be mounted 3'-5' from base on 19' antennas. Mount kit sold separately.



Classic

4018-M

19' (5.8m) VHF Marine Band 9dB Gain

Same as Style 4018, with a special sleeve for mast mounting. Used primarily for land-based stations and on commercial vessels.

- Brass and copper elements
- Mid-section ferrules: chrome-plated brass; bottom ferrule: aluminum sleeve
- SO-239 connector at base
- Suggested mount: Mast mount using supplied 1 3/4" U-bolts; or use optional 4715 mounting clamps – see page 55
- Two sections: Base 162" (4.1m), Tip 66" (1.7m)

Max. Power Input: 50 watts

SWR Nominally: 1.5:1 at 156.8 MHz

Bandwidth: 3 MHz within 2.0:1 VSWR

Frequency: VHF Marine Band



4715
Mounting Clamps
(see page 55)



All fiberglass should be even with or above the mast.





Classic

5208-3

23' (7m) VHF 9dB Gain

The Style 5208-3 delivers performance and then some. Its nine phased 1/2-wave element, 23' design means long distance communications in heavy seas – no problem!

- Brass and copper elements
- Chrome-plated brass ferrules
- Includes 20' RG-58 cable and a PL-259 connector
- Suggested mount: Style 409-R or 410-R Mounti Kit for deck or side mounting
- Three sections: Base 75" (1.9m), Middle 100" (2.5m), Tip 105" (2.7m) – UPS shippable

Max. Power Input: 50 watts
SWR Nominally: 1.5:1 at 156.8 MHz
Bandwidth: 3 MHz within 2.0:1 VSWR
Frequency: VHF Marine Band
DC Grounding: No



Classic

476

21' (6.4m) VHF Marine Band 10dB Gain

The Classic 476 is an exemplary model of the high quality and performance boaters trust in a Shakespeare® antenna. Particularly designed to deliver a message at all costs, our 21' VHF antenna positions the signal on the horizon to provide gain in all directions. Ideally built for heavy-duty seagoing applications, such as workboats, tugs and tidal well service boats, this Classic is also an excellent choice for land-based stations.

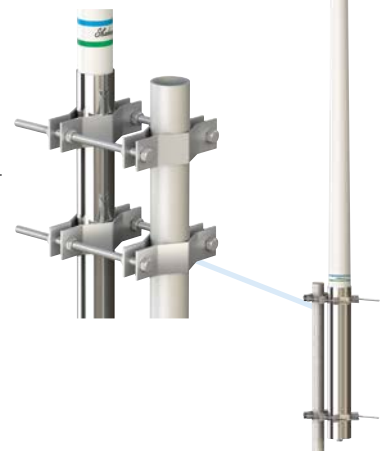
- Brass and copper internal elements
- SO-239 connector at the base
- Mount: The 476 has a 2 3/4" diameter x 26" (.7m) long 6061-T-6 aluminum sleeve which can be strapped directly to a mast or used with Shakespeare® Style 483 Clamp Set or Style 484 Wall Mounting Brackets (each sold separately)

Max. Power Input: 350 watts
SWR Nominally: 1.5:1 at 156.8 MHz
Bandwidth: 10 MHz within 2.0:1 VSWR
Frequency: VHF Marine Band



**Style 483
Mast Clamp**

Heavy-duty galvanized steel.
Sold separately.





VHF ANTENNAS



Classic



MD15

9' (2.7m) VHF Marine Band 6dB Gain Commercial VHF antenna

The MD15 is a heavy duty stacked collinear antenna with 3dBd gain. The antenna element is made from solid brass and steel bar. The antenna offers a good wide bandwidth/VSWR characteristic set to 156-162MHz for marine band use. Mounting is by use of included side clamps (4715).

- Solid Brass and Steel elements
- GRP tube filled with closed cell foam and epoxy resin
- 1 meter of RG-213 coax with N connector
- 4715 mount included
- One section: 2.7m

Max. Power Input: 150 watts
SWR Nominally: 1.5:1 156.8 MHz
Bandwidth: 5 MHz within 2.0:1 VSWR
Frequency: VHF Marine Band



Classic



MD70

5' (1.5m) VHF Marine Band 3dB Gain Commercial VHF antenna

The MD-70 is a 3dB end fed antenna, fully sealed in a GRP tube. The antenna offers a good wide bandwidth/VSWR characteristic to cover the full 156-162MHz marine band. Mounting is by use of the included V-bolts that can clamp to a horizontal or vertical pole.

- Solid Brass elements
- Integrated V-bolt system
- 1 meter of RG-213 coax with N connector
- V-bolts included
- One section: 1.5m

Max. Power Input: 150 watts
SWR Nominally: 1.5:1 156.8 MHz
Bandwidth: 5 MHz within 2.0:1 VSWR
Frequency: VHF Marine Band





Classic



MD7A

5' (1.55m) VHF Marine Band 3dB Gain Commercial VHF antenna

The MD7A is of rugged construction with the radiating elements sealed within a GRP tube with closed cell foam and epoxy resin. The antenna offers a good wide bandwidth/VSWR characteristic within the frequency range 156 - 162 MHz supplied complete with 1 meter of RG213 low loss coaxial cable with fitted 'N' type jack and stainless steel clamps (4715).

- High grade aluminum elements
- GRP tube filled with closed cell foam and epoxy resin
- 1 meter of RG-213 coax with N connector
- 4715 mount included
- One section: 1.55m

Max. Power Input: 100 watts
SWR Nominally: 1.5:1 156.8 MHz
Bandwidth: 5 MHz within 2.0:1 VSWR
Frequency: VHF Marine Band



QuickConnect™

QC-8

8' Antenna Installation System

To make it easy and convenient to install/replace your antenna, we designed our QuickConnect™ antenna system with cable attached to the mount instead of the antenna itself. Simply screw on/off the antenna, and enjoy this hassle-free and cost-effective alternative to the traditional antenna installation. The QuickConnect™ products have a 2 year warranty and have the same mounting hole pattern as our standard antenna mounts. Note: When selecting a QuickConnect™ antenna, you must pair it with a QuickConnect™ mount.



QC-4 and QC-3

Same as QC-8 but in 4' and 3' configurations



Classic



1200-V

4' (1.26m) VHF Marine Band 3dB Gain Commercial VHF antenna

This commercial antenna is designed for commercial operators where performance and ease of installation are a necessity. With brass and copper elements for extra performance and wide frequency range (16MHz) to meet the demands of professional operators (146-162MHz).

- Brass and copper elements
- Chrome-plated brass ferrule with standard 1"-11 BSP thread
- Type SO-239 connector inside mounting sleeve for easy mounting and dismantling for stowage
- Suggested mount: Standard 1" 11 thread mount
- One section: 1.26m

Max. Power Input: 100 watts
SWR Nominally: 1.5:1 at 156.8 MHz
Bandwidth: 16 MHz within 2.0:1 VSWR
Frequency: VHF Marine Band



Why 2½ Stars?

Although all QuickConnect™ antennas are made with the quality materials, our Classic antennas perform slightly better. The benefit with QuickConnect™ antennas is convenience of installation and removal.



VHF ANTENNAS



Sailboat

Our sailboat antennas are specifically designed for elegance and easy masthead mounting. Attractive, convenient and sailboat friendly, these quality antennas will provide reliable radio communication on your sailboat.



VHF ANTENNAS

★★★ (Short Range)

Classic

5216 15" (38cm) VHF Marine Band Unity Gain

Whether cruising or racing on the open water, VHF marine radio is necessary to communicate with bridge operators, the Coast Guard or other boaters around you. Built specifically for sailboat racers, the Classic 5216 VHF antenna is small in size and extra lightweight to uphold exceptional performance. Quality gold-plated connectors that maintain low-loss performance are complemented by a black stainless steel whip, providing a sleek look of luxury.

- Small and extra light weight
- Black stainless steel whip
- Black "L" bracket included for mast mounting
- Gold-plated connector

Max. Power Input: 25 watts
SWR Nominally: 1.5:1 at 156.8 MHz
Bandwidth: 5 MHz within 2.0:1 VSWR
Frequency: VHF Marine Band



★★★

Classic



5215 Squatty Body® 36" VHF 3dB Gain

End-fed 1/2-wave stainless steel whip

A favorite with sailboat owners. Lightweight, low profile. Designed for masthead mounting.

- Sealed, tin-plated copper wire coil
- Stainless steel whip
- SO-239 connector
- Mount: Stainless steel "L" bracket supplied

Max. Power Input: 50 watts
SWR Nominally: 1.5:1 at 156.8 MHz
Bandwidth: 7 MHz within 2.0:1 VSWR
Frequency: VHF Marine Band



5215-D Same as 5215 but in Blister Pack



★★★

Classic

5215-C-X Squatty Body® 36" VHF 3dB Gain

Same as the Style 5215 but comes with 60' of RG-8/X low-loss cable and PL-259 connectors.





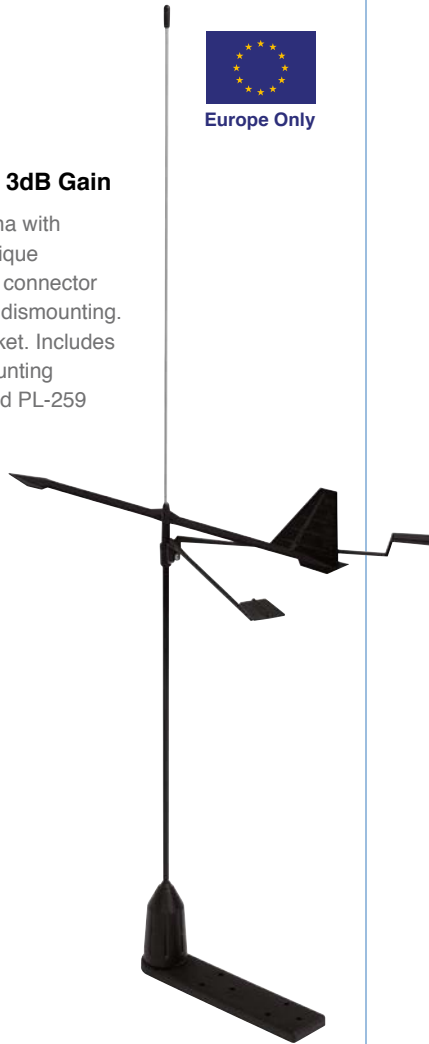
Classic

YHK
3' (0.9m) VHF Marine Band 3dB Gain

Stainless steel whip VHF antenna with 'Hawk' windex for sail boats. Unique solderless, watertight masthead connector system for easy installation and dismantling. Lightweight - 0.15 kilo with bracket. Includes 180mm flat masthead nylon mounting bracket. 20m of RG-58 cable and PL-259 connector. Fitting instructions in 17 languages.



Europe Only



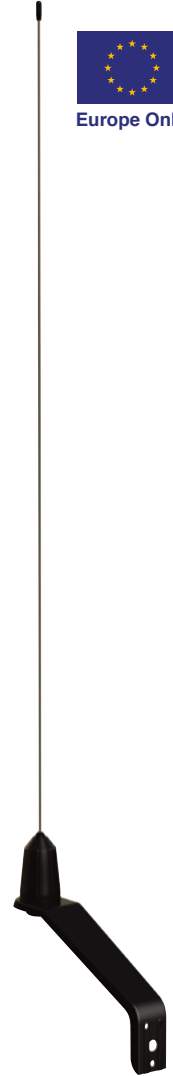
Classic

YWX
3' (0.9m) VHF Marine Band 3dB Gain

Stainless steel whip VHF antenna for sail boats. Unique solderless, watertight masthead connector system for easy installation and dismantling. Lightweight - 0.15 kilo with bracket. Includes 180mm cranked masthead nylon mounting bracket. 20m of RG-58 cable and PL-259 connector. Fitting instructions in 17 languages.



Europe Only



VHF ANTENNAS



Why 2 Stars?

Although all Shakespeare antennas are made with the highest quality standards, those rated as two stars reflect a decrease in range as compared to other Classic series antennas.

★★ (Short Range)

Classic

MD23
Heliflex Stub Antenna

Extra heavy-duty helical AIS antenna for short range communications. Ideal for sail and power boats to withstand the most rugged conditions. Watertight, strong, lightweight (0.3 kg) construction. Electronics are sealed in epoxy for additional protection.

MD23-AIS: supplied with 20m RG-58 cable plus PL-259 connector and 180mm aluminum bracket.



Packed in poly bag.

MD23N
Same as MD23 but fitted with "N" Jack

MD23-N-AIS: fitted with 'N' connector to allow detachable cable. (Bracket not included).

Packed in poly bag.



★★★

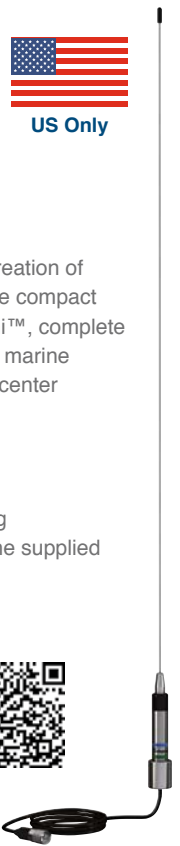
Classic

5250 Skinny Mini™
3' (0.9m) VHF Marine Band 3dB Gain

Shakespeare's master craftsmanship enables the creation of VHF antennas to accommodate any size vessel. The compact size and light weight of the Classic 5250 Skinny Mini™, complete with a sealed, tin-plated copper wire coil, is ideal for marine vessels with limited space, such as bass boats and center console fishing vessels.

- Stainless steel whip (36")
- Sealed, tin-plated copper wire coil
- Chrome plated brass canister minimizes de-tuning
- Requires mount with center hole for passage of the supplied cable
- 15' RG-58 cable and PL-259 connector included
- Suggested mount: Style 4187, 5187, 4188-S, or 4190 Ratchet Mounts

Max. Power Input: 50 watts
SWR Nominally: 1.5:1 at 156.8 MHz
Bandwidth: 7 MHz within 2.0:1 VSWR
Frequency: VHF Marine Band



5250-D
Same as 5250 but in Blister Pack



VHF ANTENNAS

Why 2 Stars?

Although all Shakespeare antennas are made with the highest quality standards, those rated as two stars reflect a decrease in range as compared to other Classic series antennas.



HF/SSB Antennas

Shakespeare®
MARINE - RULE THE WAVES



HF/SSB ANTENNAS

HF/SSB Antennas

Marine HF/SSB (high frequency / single-sideband) radios are high powered communication systems that enable extra-long range communication while on the water. When paired with a quality Shakespeare® antenna, an HF radio system facilitates communication with users hundreds or thousands of miles away. Shakespeare's HF/SSB antennas deliver the high quality and performance needed to keep you connected, even while you are far off shore.



6390-R 18' 4" (5.6m) SSB Marine Band

For long range HF/SSB communication, this side-fed antenna handles 1 KW output power. Silver-plated elements inside of a foam-filled, fiberglass radome provide superior performance and stability in tough conditions. Your long range signals will "skip" in style with the sleek high-gloss finish of this antenna.

- Silver-plated outer conductor, copper inner conductor
- Stainless steel mounting sleeve
- Side-fed termination stud
- Suggested Mount: Shakespeare® Style 409-R or 410-R Mounting Kit
- Two sections: Base 110" (2.8m), Tip 110" (2.8m)

Max. Power Input: 1000 watts
Resonant Frequency: 10.8 MHz
Frequency: 2-30 MHz with a tuner (tuner not supplied)



5390 17' 6" (5.3m) SSB Marine Band

This hand crafted Galaxy® antenna is with reinforced insulating qualities to allow input power up to 1 KW. Full-length conductors are permanently sealed in pristine white fiberglass, coated in a high-gloss to prevent yellowing in the sun. The master craftsmanship of this antenna ensures reliable and efficient long range communication.

- High-gloss, non-yellowing polyurethane finish
- Stainless steel ferrule with standard 1"-14 thread
- Side-feed termination stud
- Suggested mount: Shakespeare® Style 409-R or 410-R Mounting Kit (each sold separately - pictured mount not included)
- Two sections: Base 105" (2.7m); Tip 105" (2.8m) - UPS shippable
- Twin to: Style 5018 VHF antenna

Max. Power Input: 1 KW
Resonant Frequency: 14 MHz
Frequency: 2-30 MHz with a tuner (tuner not supplied)





GALAXY®

5310-R 23' (7m) SSB Marine Band

This hand-crafted Galaxy® antenna is a top performer for commercial vessels, yachts and larger sportfishing boats. The 23' antenna easily handles up to 1 KW input power and communicates with maximum range and efficiency, encasing brass and copper elements. High performance, durability and a sleek high-gloss finish are all staples in a genuine Shakespeare® antenna.

- Brass and copper elements for maximum range and efficiency
- High-gloss, non-yellowing polyurethane finish
- Stainless steel ferrule with standard 1"-14 thread
- Side feed termination stud
- Suggested mount: Shakespeare® Style 409-R or 410-R Mounting Kit (each sold separately - pictured mount not included)
- Two sections: Base 172" (4.4m), Tip 105" (2.7m)
- Twin to: Galaxy® Style 5309-R VHF

Max. Power Input: 1 KW
Resonant Frequency: 10.8 MHz
Frequency: 2-30 MHz with a tuner (tuner not supplied)



Support bracket should be mounted 5'-7' up from base on 23' antennas. Mount kit and cable sold separately.



Classic

390 23' (7m) SSB Marine Band

This award-winning performer is often called "the standard of the industry" by virtue of its capabilities and popularity. Reinforced insulating qualities of this antenna allow input power up to 1 KW. Shakespeare's durable fiberglass seals the conductors to optimize the performance and efficiency of long range communication.

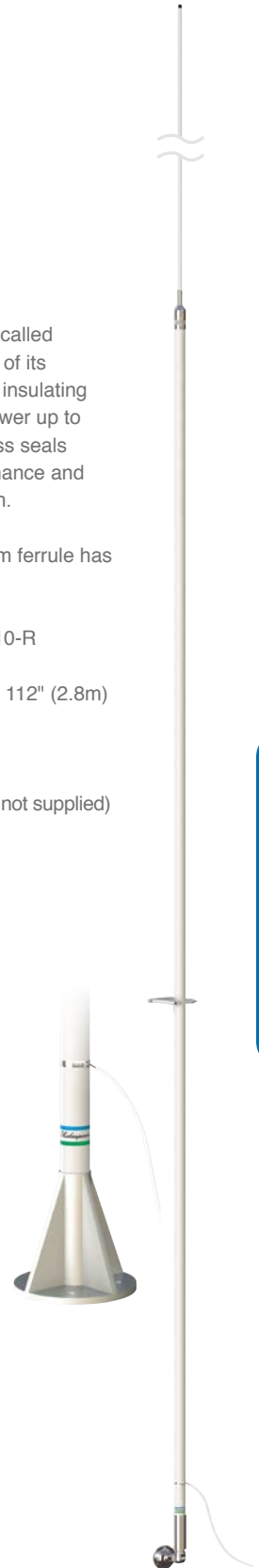
- Chrome-plated brass ferrules; bottom ferrule has 1"-14 thread
- Side feed termination band
- Suggested mount: Style 409-R or 410-R Mounting Kit
- Two sections: Base 162" (4.1m), Tip 112" (2.8m)

Max. Power Input: 1 KW
Resonant Frequency: 10.8 MHz
Frequency: 2-30 MHz with tuner (tuner not supplied)



390-1 23' (7m) SSB Marine Band

Same as Classic 390 only with anodized Almag 35 aluminum base flange and side feed termination band. Base is 6" in diameter.



HF/SSB ANTENNAS



Classic

393

23' (7m) SSB Marine Band

The Classic 393 antenna is electrically the same as the industry standard Classic 390, but is designed in three sections for convenient shipping. This Shakespeare® antenna performs best in calm to moderate seas.

- Chrome-plated brass ferrules; bottom ferrule has 1"-14 thread
- Side feed termination band
- Suggested mount: Style 409-R or 410-R Mounting Kit
- Three sections: Base 92" (2.3m), Center 92" (2.3m), Tip 92" (2.3m) – UPS shippable

Max. Power Input: 1 KW

Resonant Frequency: 10.8 MHz

Frequency: 2-30 MHz with tuner
(tuner not supplied)



Support bracket should be mounted 5'-7' up from base on 23' antennas. Mount kit sold separately.



Classic

5300

28' (8.5m) SSB Marine Band

This heavy-duty performer is designed primarily for larger commercial vessels, which demand peak performance over the entire HF marine band. This antenna allows input power up to 1 KW and permanently seals conductors within the pristine white, Shakespeare® fiberglass.

- Chrome-plated brass center fittings; anodized aluminum bottom ferrule
- Side feed termination band
- Mount: The 2 3/8" diameter x 24" (.6m) long 6061-T-6 anodized aluminum sleeve can be strapped directly to a mast or used with Shakespeare's Style 483 Clamp Set or Style 484 Wall Mounting Brackets (each sold separately, see page 56).
- Two sections: Base 192" (4.9m), Tip 144" (3.7m)

Max. Power Input: 1 KW

Resonant Frequency: 8.4 MHz

Frequency: 2-30 MHz with tuner
(tuner not supplied)





Classic



US Only

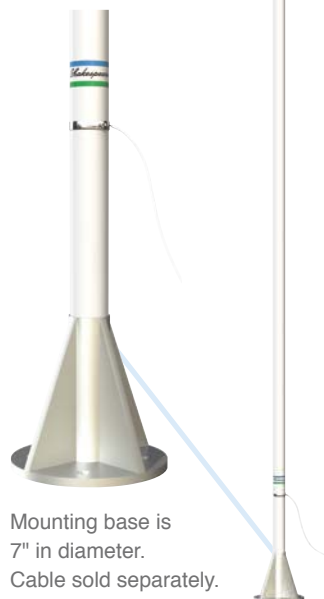
4328
28' HF/SSB

Self supporting whip antenna with conductors running full length (no loading coil)

This commercial antenna is designed for large vessels where highest HF-band performance is required. The two-piece Style 4328 easily accommodates input up to 1 kilowatt. Its white Shakespeare® fiberglass radome has a built in flange base for mounting to a deck as a self-supporting antenna.

- Chrome-plated brass center fittings, anodized aluminum mounting flange
- Side-feed termination band
- Two sections: Base 192", Tip 144"

Max. Power Input: 1 KW
Resonant Frequency: 8.4 MHz
Frequency: 2-30 MHz with tuner
(tuner not supplied)



Mounting base is 7" in diameter.
Cable sold separately.

Tech Tips

- HF/SSB antennas require GTO-15 high voltage cable (not supplied)
- All HS/SSB systems require adequate grounding. Consult a local installer for ground plane requirements.
- A separate antenna tuner (not supplied) is required for most SSB radios. Consult a radio manufacturer for more information.
- All HF/SSB systems require suitable grounding. Consult your transceiver's documentation for guidance.

HF/SSB ANTENNAS





Classic

222-BA
35' (10.6m) HF/SSB Band
Commercial HF/SSB antenna



This Heavy-duty thirty-five shipboard antenna can be found in use worldwide. Using the Shakespeare® fiberglass process assures this antenna of seaworthy construction for years to come. An integrated base flange is used for mounting this antenna in a self-supporting fashion where take down and storage is not required. Separate insulators are not required and the antenna comes with a side-feed termination point. A must have antenna for any commercial vessel traveling international waters.

- Brass and copper elements
- Integrated Steel base flange
- Side-feed termination stud
- Self-supporting
- Two sections: Base 17'6" (5.3m), Tip 17'6" (5.3m)

Max. Power Input: 5 KW
SWR Nominally: N/A
Bandwidth: Resonant Frequency 10.8 MHz
Frequency: HF/SSB Band



Classic

9000-H
30' (9m) HF/SSB Band
Commercial HF/SSB antenna

This commercial antenna is designed for large vessels where highest HF-band performance is required. The three-piece Style 9000-H easily accommodates up to 1.2 kw. Its pristine white Shakespeare® fiberglass radome will give years of service while the copper elements will ensure performance over the entire HF band.

- Brass and copper elements
- Mounting collars
- Side-feed termination stud
- Suggested mount: 4715 or 484
- Three section: Base 12.1' (3.7m), Mid 8.7' (2.64m), Tip 8.7' (2.63m)

Max. Power Input: 1.2 KW
SWR Nominally: N/A
Bandwidth: Resonant Frequency 10.8 MHz
Frequency: HF/SSB Band



Classic



9010-H
30' (9m) HF/SSB Band
Commercial HF/SSB antenna

This commercial antenna is designed for large vessels where highest HF-band performance is required. The four-piece Style 9000-H easily accommodates up to 1.2 kw. Its pristine white Shakespeare® fiberglass radome will give years of service while the copper elements will ensure performance over the entire HF band. Ships in under 10' (3m) in length.

- Brass and copper elements
- Mounting collars
- Side-feed termination stud
- Suggested mount: 4715 or 484
- Four section: Base 3.4' (1.03m), Mid A 8.8' (2.66m), Mid B 8.7' (2.64m), Tip 8.7' (2.63m) – UPS shippable

Max. Power Input: 1.2 KW
SWR Nominally: N/A
Bandwidth: Resonant Frequency 10.8 MHz
Frequency: HF/SSB Band



Classic

8000-H
27' (8m) HF/SSB Band
Commercial HF/SSB antenna

This commercial antenna is designed for large vessels where highest HF-band performance is required. The three-piece Style 8000-H easily accommodates up to 1.2 kw. Its pristine white Shakespeare® fiberglass radome will give years of service while the copper elements will ensure performance over the entire HF band. Ships in under 3' (3m) in length.

- Brass and copper elements
- Mounting collars
- Side-feed termination stud
- Suggested mount: 4715 or 484
- Three section: Base 8.8' (2.66m), Mid 8.7' (2.64m), Tip 8.7' (2.63m)

Max. Power Input: 1.2 KW
SWR Nominally: N/A
Bandwidth: Resonant Frequency 10.8 MHz
Frequency: HF/SSB Band



Cellular/WiFi Products

Whether you need to make phone calls, check emails, surf on the internet, stream videos or stay connected to friends and family via social media, you will likely need some of our cellular products to stay connected at sea. Extended range from shore, faster data speeds and fewer dropped calls are some of the benefits you will get when outfitting your boat with Shakespeare® cellular products.



NETFLIX hulu

YouTube
www



CELLULAR/WIFI PRODUCTS



PHASE III™

6410

4' (1.2m) Cellular Band 3dB Gain

Hand assembled and hand soldered by our master craftsmen, the Phase III™ 6410 marine cellular antenna ensures reliable communication over all digital, analog and PCS cellular bands. Silver-plated elements maximize the electrical efficiency and performance of this antenna while encased by the fiberglass radome. The feeling of luxury that exudes from the gleaming white, high-gloss finish will give you something to call home about. See our cell phone amplifiers to connect your cell phone.

- Silver-plated outer conductor, copper inner conductor
- Stainless steel mounting sleeve
- Type "N" connector inside mounting sleeve for easy mounting and dismounting for stowage
- Suggested mount: Shakespeare® Style 4187-HD

Max. Power Input: 50 watts

SWR: Less than 1.5:1 to 852.65 MHz;

Less than 1.5:1 at 1918.7 MHz

Bandwidth: 96 MHz within 2.0:1 VSWR

(800/900 MHz band);

140 MHz within 2.0:1 VSWR

(1900 MHz band)

Frequency: Dual Band 800-

900 MHz and 1800-1900 MHz



PHASE III™

6237

8' (2.4m) Cellular Band 3dB Gain

The innovative engineering behind this 8' antenna supplies the high-end features to optimize quality communication over all digital, analog and PCS cellular bands. A foam-filled, fiberglass radome coated in a high-gloss, non-yellowing finish provides stability and durability during tough conditions. The electrical efficiency of the silver-plated elements within this marine cellular antenna improves with age, increasing the longevity and dependability of your service. See our cell phone amplifiers to begin using your cell phone aboard.

- Silver-plated outer conductor, copper inner conductor
- Stainless steel mounting sleeve
- Type "N" connector inside mounting sleeve for easy mounting and dismounting for stowage
- Suggested mount: Shakespeare® Style 4187-HD

Max. Power Input: 50 watts

SWR: Less than 1.5:1 to 852.65 MHz;

Less than 1.5:1 at 1918.7 MHz

Bandwidth: 96 MHz within 2.0:1 VSWR

(800/900 MHz band);

140 MHz within 2.0:1 VSWR

(1900 MHz band)

Frequency: Dual Band 800-

900 MHz and 1800-1900 MHz



PHASE III™

8 YEAR

WARRANTY



GALAXY®

5237-XT

8' (2.4m) Dual Band Cellular 3dB Gain

This dual band cellular antenna covers digital, analog and PCS cell phone bands in an 8' radome that coordinates with our other Shakespeare® Galaxy® antennas. The brass and copper elements are hand soldered by master craftsman for reliability of range and efficiency. Our craftsmen also hand finish the pristine white radome with the Galaxy® high-gloss finish to ensure a lasting beauty and look of luxury. See our cell phone amplifiers to begin taking your calls aboard.

- Brass and copper elements to maximize range and efficiency
- High-gloss, non-yellowing polyurethane finish
- Stainless steel ferrule with standard 1"-14 thread
- Includes 25' of Shakespeare® exclusive RG-8/X low-loss cable and a "TNC" connector
- Suggested mount: Style 4187 or 5187

SWR: Bandwidth: 96 MHz within 2.0:1 VSWR (800/900 MHz band); 140 MHz within 2.0:1 VSWR (1900 MHz band)

Frequency: Dual Band 800-900 MHz and 1800-1900 MHz



GALAXY®

5410-XT Little Giant™

4' (1.2m) Dual Band Cellular 3dB Gain

Covering the digital, analog and PCS cellular bands, voices will be clearly heard with our compact, extra tough marine cellular antenna. The range and efficiency of this Little Giant™ are maximized by brass and copper elements inside of a durable, pristine white radome. The renowned quality and reliability of a Shakespeare® antenna will shine bright with the lasting, Galaxy® high-gloss finish. See our cell phone amplifiers to connect your phone for service on the water.

- Brass and copper elements to maximize range and efficiency
- High-gloss, non-yellowing polyurethane finish
- Stainless steel ferrule with standard 1"-14 thread
- Includes 25' of RG-8/X low-loss cable and a "TNC" connector
- Suggested mount: Style 4187 or 5187

SWR: Less than 1.5:1 at 852.65 MHz; Less than 1.5:1 at 1918.7 MHz

Bandwidth: 96 MHz within 2.0:1 VSWR (800/900 MHz band) 140 MHz within 2.0:1 VSWR (1900 MHz band)

Frequency: Dual Band 800-900 MHz and 1800-1900 MHz



5411-XT Little Giant™

4' (1.2m) Dual Band Cellular 3dB Gain

Same as the 5410-XT in an exclusive black Galaxy® finish.





2G/3G



AURA CA-VAT

The AURA Cellular Booster Kit enables you to optimize cellular coverage on your boat or in your home where reception is weak due to distance from cell tower, topography or building materials. Its compartmentalized design, sturdy metal casing ensures enhanced call clarity that will last for years. This kit enhances 3G voice and data for all major U.S. carriers and will support 5-10 simultaneous users in a 50 ft. wide by 100 ft. long direction, for total coverage of 5,000 square ft. The kit comes with indoor and outdoor antennas, cell booster and cabling for a complete cellular enhancement solution. The AURA Booster features adjustable dials for pinpoint enhancement and features an indoor panel antenna to direct coverage where it's needed most.



2G/3G/4G



FANTOM Amplifier CA-VAT-100

The FANTOM enables you to optimize cellular coverage on your large watercraft or in a spacious home where reception is weak due to distance from cell tower, topography or building materials. It is the most powerful self-contained, five-band cell on the market today. It combines 3G enhancement capabilities with 4G for Verizon, AT&T and T-Mobile as a total cellular amplification solution. Its highly linear design enables the FANTOM to support 100+ simultaneous users up to 80,000 square ft. in radius in the most efficient and elegant method possible. This full-featured amplifier includes adjustable control and automatic shutdown for maximum flexibility. Extremely competitively priced, it requires 1/5th the space requirements and is a fraction of the cost compared to similar amplifiers with its capabilities. Ideal for locations with a low cellular signal requiring large coverage.



2G/3G/4G



NEW SuperHALO CA-VAT-10-R

The SUPER HALO Cellular Booster Kit enables you to optimize cellular coverage on your boat or in your home where reception is weak due to distance from cell tower, topography or building materials. This kit will support 5-10 simultaneous users in a 50 ft. wide by 100 ft. long direction, for total coverage of 5,000 square ft. Its compartmentalized design, sturdy metal casing ensures enhanced call clarity that will last for years. The kit comes with indoor and outdoor antennas, cell booster and cabling for a complete cellular enhancement solution. The SUPER HALO Booster features adjustable dials for pinpoint enhancement and features an indoor panel antenna to direct coverage where it's needed most. The booster also features automatic shutdown and oscillation detection.



2G/3G



BOONIE CA-CAR

Add a cell phone booster to your vehicle and stay connected in the most challenging of geographical locations. By increasing a weak signal, the Boonie CA-CAR 2G/3G 50dB Cellular Booster kit lets you make and receive clear calls in what would have been a dead zone. This cellular booster kit is 2G and 3G compatible with all major US carriers. Not only does the Boonie enhance and extend your coverage, it can also extend the battery life on your phone or handheld cellular device by drastically reducing tower search that commonly drains a device's battery while roaming. The kit comes with an interior low-profile antenna that will rebroadcast the amplified cell signal throughout your vehicle, cabin or even home, providing an approximate coverage area of up to 15 square feet.



WEBwatch™ WCT-1

Take your entertainment wherever you go. WebWatch lets you access the internet from a Wi-Fi Hotspot or cellular network with up to 4G speeds and share it wirelessly or through Ethernet. Access your favorite local TV channels through the WebWatch's built in TV receiver. for use on your boat, recreational vehicle, cabin or AnyWhere else.

Features:

- Dual antenna design
- Auto switch between Wi-Fi and Cellular
- iOS and Android app, web-based management
- Wi-Fi hotspot or Ethernet port network
- SMS and app reboot function
- High performance CPU and SDRAM
- Single cable for power and TV

Benefits:

- Pick up the best signal with maximum clarity
- Save on data when possible, uninterrupted.
- Device management tools, optimize mobile screen, computer or tablet
- Flexibility to extend Wi-Fi network
- Safely reboot without accessing power supply
- Fast, reliable, and responsive
- Only single cable to be installed if not using LAN



WEBwatch™ WC-1

The WC-1 brings you all the same great features as the WCT-1, but without TV functionality.

Technical Specifications

Power Supply & Consumption	DC12V/24V, 600 A @12 VDC Max
Device Management	iOS app, Android app and web browser
Internet access through	Wi-Fi hotspot or 3 Ethernet ports
Number of Users	Up to 32 on Wi-Fi and Cellular
Connectors	Male "F" connector (TV), 1 x Ethernet (WAN), 3 x Ethernet (LAN)
Wire	25ft (7.62m) RG-59 coax cable/power cable
RoHS Compliant	Yes
Dimensions	Dia. 11.75 in x 13 in (29.84cm x 33.02cm)
Weight	3.85lbs (1.74kg)
Wireless Approvals & Certifications	FCC, CE

Wireless and Network

Incoming	Long-Range Wi-Fi receiver, Cellular or 1 WAN port
Outgoing	thru Wi-Fi Router, thru Ethernet Router
Frequency	2.4 GHz
Other Network Features	Built-in Firewall, Dynamic DNS, Integrated Open VPN, IP Sec
Port Speed	LAN - 10/100Mbps, WAN- 10/100Mbps
Gain	2dB

Cellular Specifications

Bands	
LTE (FDD)	B2/B4/B55/B17 with diversity
HSPA	DC-HSPA+/HSPA+/HSPA/WCDMA B2/B4/B5 with diversity
Speed	
LTE 4G	Up to 100 Mbps Download, 50 Mbps Upload (dependent on carrier)
HSPA+ 3G	Up to 42 Mbps Download, 5.76 Mbps Upload (dependent on carrier)
Gain	4dB

TV Specifications

Receiving Range	VHF/UHF
Frequency ranges	AM: 520-1719 KHz FM: 88-108MHz, VHF: 87.5-230MHz; UHF: 470-790MHz
Antenna Gain	28dB
Max Output Level	100dBµV Max
Impedance	75Ω
Noise Figure	≤4.5dB
Compatibility	NTSC, ATSC (HDTV), T-DMB





WebWhip™

WiFi-1

Stay connected to the world of information where ever you go. Increase the coverage of public hotspots with the WebWhip, our fully integrated Wi-Fi antenna, radio and router, for hassle-free internet reception on your boat, RV, cabin or AnyWhere® else. Access the internet directly through LAN or wirelessly, by connecting WebWhip to any standard Wi-Fi router. Manage the network without any software installation through any device with a web browser. Simple, powerful, AnyWhere.

Features:

- 28dBm receiver
- Built-in router
- Works with normal Wi-Fi router
- Power over Ethernet (PoE)
- Fully plug and play
- Web-based device manager
- FCC and CE certified radio



Benefits:

- Long range WiFi reception on land or water
- Connect straight to your computer without separate router
- Easy to create local Wi-Fi hotspot with any standard Wi-Fi router
- Single wire for power and data. No power consumed from connected device
- Simple, intuitive set-up and operation. No software installation required
- Manage device easily on any device with an internet browser
- Safe and legal



Technical Specifications

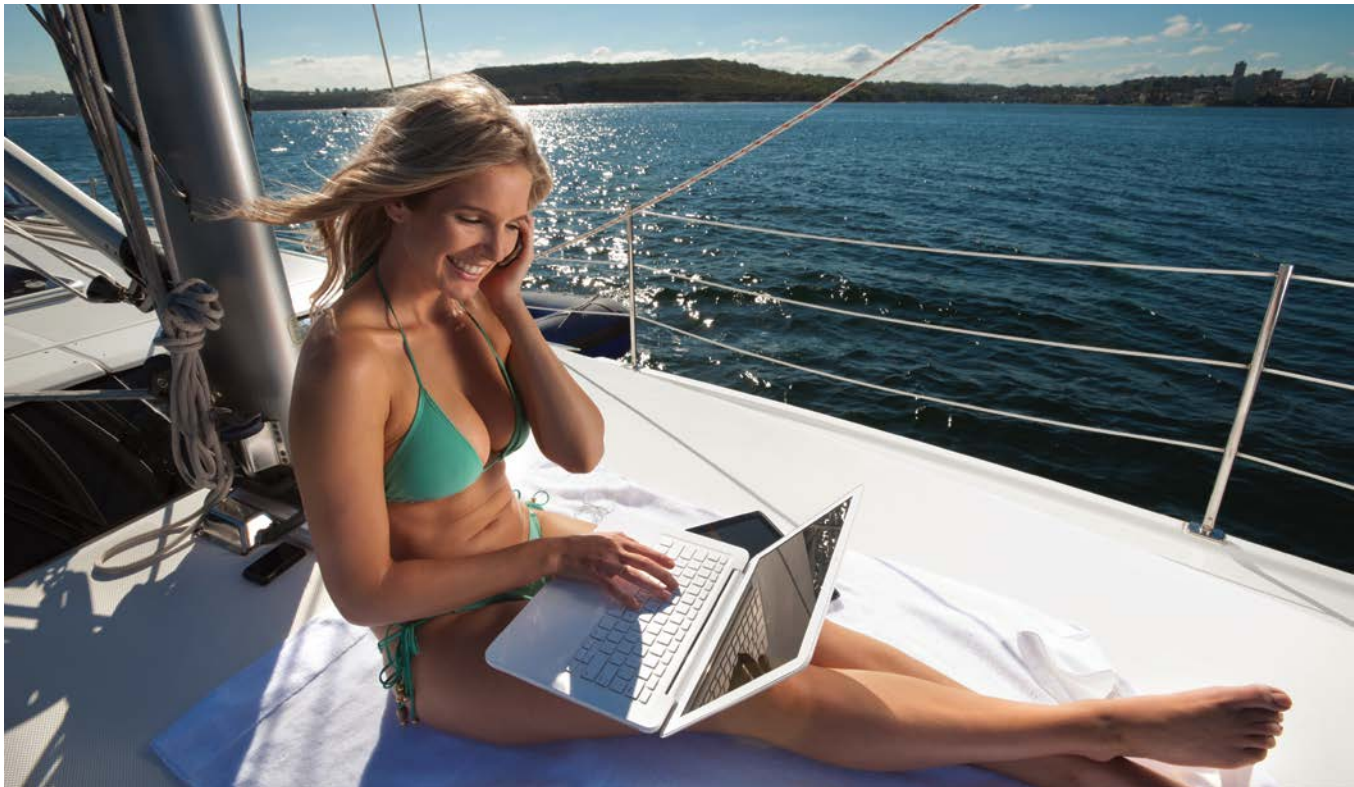
Frequency and Wireless Standards	2.4GHz, 802.11 b/g/n
Radio Power	Up to 28dBm
Antenna Gain	5dB
Range	Up to 7 Miles*
Throughput	100+ Mbps
Wire	25ft (7.62m) Ethernet cable
Connectors	N-Female (Antenna), Ethernet (Device)
Power Supply & Consumption	12VDC & 120/220VAC, 0.6A at 12VDC
Wireless Approvals	FCC Part 15.247, IC RS210, CE
RoHS Compliant	Yes
Dimensions	19.5in x 3.1in x 1.5in (24.13cm x 7.87cm x 3.81cm)
Weight	13.6oz
FCC ID (USA)	SWX-M2B

*Range may increase or decrease depending on factors like hotspot strength and obstacles in line of sight



WiFi-2

Same as WiFi-1 with stainless steel construction



Multi-Function Antennas

Shakespeare®

MARINE - RULE THE WAVES



SPECIALTY ANTENNAS

Multi-Function Antennas



GALAXY®

5239

**9.25" (23cm) World Band Cellular 3dB
698-960 MHz and 1700-2700 MHz Cellular**

698-960 MHz and 1700-2700 MHz Cellular
The Galaxy® 5239-P antenna is our smallest Galaxy® antenna, but don't let the size fool you. This World-band antenna provides coverage for 2G/3G/4G and WLAN systems for Cellular, PCS, AWS and LTE frequencies, as well as 802.11n Wi-fi. This compact, feature rich antenna is at home on virtually any watercraft, and is fitted with a stainless steel ferrule and N-connector that are compatible with nearly all Shakespeare 1in -14 threaded mounts.

- Full Band (698 – 2700 MHz) Broadband
- 2G/3G/4G and WLAN systems
- Wi-fi 802.11n compatible
- Designed for marine use
- Omni-directional antenna 3-4 dB Gain.
- Easy to install

For use with dual band and multi band amplifiers

Technical Specifications:

- Frequency 698-960/1700-2700MHz
- Input Impedance 50 ohm
- Antenna Gain 2-3dB at 698-960 MHz
- 3-4dB at 1700-2700 MHz
- VSWR \leq 1.8
- Power Rating (W) 10
- Polarization Type Vertical
- Radiation Omni-directional
- Maximum Power 100 Watt
- Connector type N-Female or based on customer request
- Dimension 9.25" (23.5cm) x 2.625" (6.7cm)
- Color White
- Operating Temperature -22° F Degrees to +176° Degrees
- Mount Mounts on roof or wall
- Beamwidth E:72 H:92/ E:50 H:80
- Groundplane Built-in ground plane
- Material Fiberglass



GALAXY®

HS-2774-1-R

6' 6" (2m) Broadband 4dB Gain

Built for maximum performance, this 6' 6" broadband antenna can handle continuous duty at maximum input power. Our master craftsmen hand solder, hand assemble and hand finish the self-supporting antenna designed primarily for military, commercial, law enforcement, and disaster preparedness applications. No tuning or ground plane required.

- Hand soldered brass elements for maximum range and efficiency
- High-gloss, non-yellowing polyurethane finish
- Stainless steel ferrule, standard 1"-14 threads
- Includes 20' of RG-8/X low-loss cable plus a N-connector
- Suggested mount: Use only Shakespeare® Style 4187-HD for self-supporting applications; use a Style 410-R if an upper support bracket installation is preferred

Max. Power Input: 125 Watts - continuous

VSWR: Less than 2:1 across the 136-174 MHz VHF band

Directive Gain On the Horizon: @136 MHz +3.3dBi;

@ 154 MHz +4dBi; @174 MHz +4.3dBi

Frequency: 136-174 MHz

U.S. Patent 5,982,332





Classic

JF-3 Versatile, Multi-Band Antenna

The JellyFish is a 3-way omni-directional, IP67 waterproof antenna for marine communication and transportation harsh environment applications. This antenna delivers advanced antenna technology for GPS/2G/3G/4G/WiFi in a compact package. The functions of WiFi include 802.11abgn and emerging 802.11ac. The antenna has its own ground-plane and can radiate on any mounting surface such as metal, plastic, or fiberglass without affecting performance.

- 3-in-1 antenna functions
- High performance for GPS/WiFi/2G/3G/4G
- Resistant to harsh outdoor environment
- Omni-directional for cellular system
- 1 Cellular/LTE (2G/3G/4G) antennas
- 1 WiFi (802.11abgn, ac) 2.4/5G antennas
- 1 GPS antenna
- Waterproof IP67
- Mounting Thread: M20 x 2.5mm
- Dimensions: 1.6" (4cm) X 4" (10.2cm)



Frequency band	2.4~2.5GHz	5~5.4GHz	5.4~5.9GHz
Average peak gain	4.8dBi	6.9dBi	7.7dBi
Average efficiency	73%	65%	70%
VSWR Max	3.0:1	3.0:1	3.0:1
Impedance	50Ω		
Pattern type/polarization	Omni-directional/ linear		
Power handling	25 watt		

Frequency band	1575.42 ± 2MHz
VSWR	1.5 Max
Bandwidth	20MHz Min. at -10dB
Axial ratio / Polarization	3dB Max. on a 70mm x 70mm ground plane / Right hand circular
Peak Gain:	4dBic Min. at 0° on a 70mm x 70mm ground plane
Gain & radiation coverage:	≥-4dBic at -90° ≤ θ ≤ 90° (over 75% volume)
Gain	27dB Typical
Noise figure	2.5dB Max.
LOW voltage operation	2.7-6.0Vdc
Impedance	50 OHMS
VSWR	2:1 Max.
Brand rejection	-35dB @ ±100MHz
Power handling	1W Max.
Current	10±3mA

Frequency band	LTE 696~800MHz	AMPS/GSM 824~960MHz	DCS/PCS 1710~1990MHz	WCDMA 1920~2170MHz 2600 MHz
Average peak gain	2.6dBi	-0.1dBi	6.7dBi	6.8dBi
Average efficiency	64%	39%	78%	80%
VSWR Max	3.0:1	3.0:1	3.0:1	2.0:1
Impedance	50Ω			
Pattern type/polarization	Omni-directional/ linear			
Power handling	25 watt			





Classic



Europe Only

AA20

3' (0.9m) Multi-Band Antenna

Heavy-duty stainless steel Active whip antenna. Receive only wideband antenna. Ideal for sail and power boats that require receive only information – HF / Navtex / weatherfax. Designed to withstand the most rugged conditions. Watertight, strong, lightweight (0.2 kg) construction. Requires AAX1 power supply. 20m RG-58 cable plus BNC connector. 180mm cranked, black aluminum bracket.

Packed in poly bag.



Classic
2YEAR
WARRANTY



Classic



Europe Only

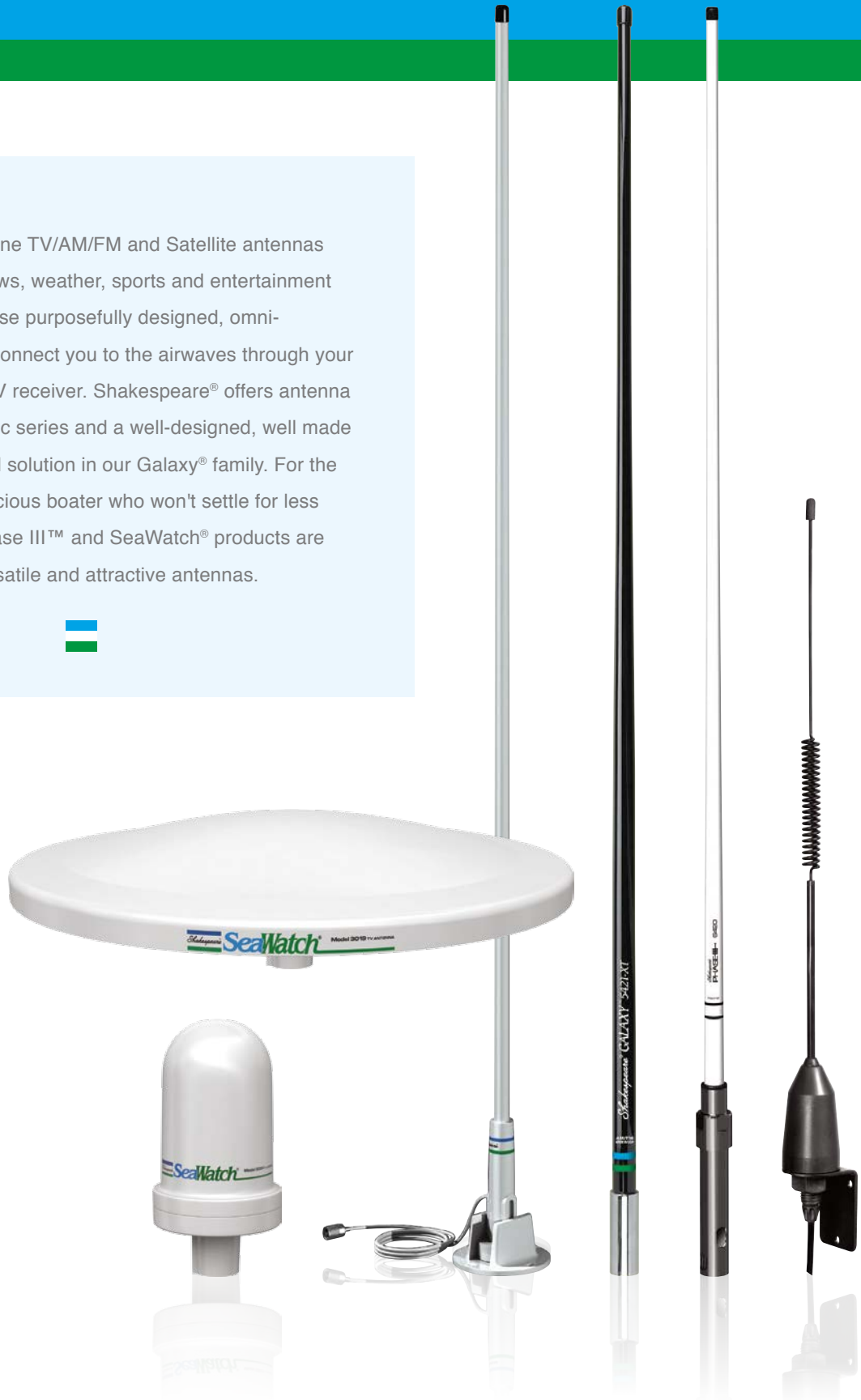
AAX1

Power Supply for Active Antennas:
AM, HF/SSB, Navtex, Weather Fax
Single output only



TV/AM/FM and SiriusXM[®] Antennas

Shakespeare[®] Marine TV/AM/FM and Satellite antennas brings your music, news, weather, sports and entertainment from near or afar. These purposefully designed, omni-directional antennas connect you to the airwaves through your on-board stereo or A/V receiver. Shakespeare[®] offers antenna solutions in our Classic series and a well-designed, well made and beautifully crafted solution in our Galaxy[®] family. For the discerning, tech-conscious boater who won't settle for less than the best, our Phase III[™] and SeaWatch[®] products are our most durable, versatile and attractive antennas.



TV/AM/FM and SiriusXM® Antennas

SeaWatch®



SeaWatch®



US Only



3019 HDTV/FM Antenna

The Shakespeare® SeaWatch® series of TV antennas are Omni-directional over-the-air digital HDTV solutions that bring sleek lines and 360° high-performance coverage to your watercraft or RV. Designed to accept common 1in-14 threaded mounts, the antennas are well suited to fit virtually any application. Everything needed to connect the antenna to your converter or television is in the box. When paired with an optional 2-way band separator between the antenna and the amplifier, these antennas can also receive AM/FM radio signals. A full line of mounts and extension masts are available to fine-tune the installation.

The 3019 antenna is designed for the mobile lifestyle and can be used on marine vessels, RVs, pop-up campers and more! Watch your favorite sports, sitcoms, reality TV, crime dramas, local news, weather, kids programming and more for FREE and in 1080 HD!



SeaWatch®



3015 HDTV/FM Antenna

The Shakespeare® SeaWatch® series of TV antennas are Omni-directional over-the-air digital HDTV solutions that bring sleek lines and 360° high-performance coverage to your watercraft or RV. Designed to accept common 1in-14 threaded mounts, the antennas are well suited to fit virtually any application. Everything needed to connect the antenna to your converter or television is in the box. When paired with an optional 2-way band separator between the antenna and the amplifier, these antennas can also receive AM/FM radio signals. A full line of mounts and extension masts are available to fine-tune the installation.

The 3015 antenna is designed for the mobile lifestyle and can be used on marine vessels, RVs, pop-up campers and more! Watch your favorite sports, sitcoms, reality TV, crime dramas, local news, weather, kids programming and more for FREE and in 1080 HD!



US Only



SeaWatch®

2061 HDTV/FM Antenna

This razor-thin, multi-directional amplified antenna is the most advanced dual band (VHF/UHF) antenna on the market. Designed with our revolutionary Clear Circuit Technology®, the embedded amplifier is able to amplify 100% of the signal at the element to maximize channel reception and minimize pixelation and dropouts for the best viewing experience possible.

The 2061 antenna is designed for the mobile lifestyle and can be used on marine vessels, RVs, pop-up campers and more! Watch your favorite sports, sitcoms, reality TV, crime dramas, local news, weather, kids programming and more for FREE and in 1080 HD!



SeaWatch®



3004 Dome HDTV/FM Antenna

The Shakespeare® SeaWatch® series of TV antennas are Omni-directional over-the-air digital HDTV solutions that bring sleek lines and 360° high-performance coverage to your watercraft or RV. Designed to accept common 1in-14 threaded mounts, the antennas are well suited to fit virtually any application. Everything needed to connect the antenna to your converter or television is in the box. When paired with an optional 2-way band separator between the antenna and the amplifier, these antennas can also receive AM/FM radio signals. A full line of mounts and extension masts are available to fine-tune the installation.

The 3004 antenna is designed for the mobile lifestyle and can be used on marine vessels, RVs, pop-up campers and more! Watch your favorite sports, sitcoms, reality TV, crime dramas, local news, weather, kids programming and more for FREE and in 1080 HD!



SA-HDTV-MAR14 Identical to the 3019



Europe Only

SA-HDTV-MAR8 Identical to the 3019



Europe Only

SA-HDTV-MAR10

HDTV/FM Antenna

10" (240mm) Omni Directional HDTV Antenna (with built-in LTE filter) newly designed using the latest TV technologies. Compact, lightweight, white ASA, weatherproof, HDTV antenna. Comes with built in high gain, low noise amplifier and LTE filter. Ideal for small power boats and sail boats. Includes amplifier gain control unit. 25m 75 Ohm RG59 cable with 2x F connectors + IEC to F connector. 1.5m adapt cable fitted with F plug to IEC. Power 12/24V DC - AC/DC Power Adapter (UK/EURO) included. Outputs: x2 TV's



TV/AM/FM and
SiriusXM ANTENNAS

Specifications

	3019	2061	3015 / SA-HDTV-MAR14	3004 / SA-HDTV-MAR8	SA-HDTV-MAR10
Frequency range	VHF:47-230MHz UHF: 470-862MHz	VHF:47-230MHz UHF: 470-862MHz	VHF:47-230MHz UHF: 470-862MHz	VHF:47-230MHz UHF: 470-862MHz	VHF:47-230MHz UHF: 470-862MHz
Receiving range	FM/VHF/UHF	FM/VHF/UHF	FM/VHF/UHF	FM/VHF/UHF	FM/VHF/UHF
Gain	30dB	28dB	30dB	30dB	30dB
Noise figure	3dB	≤3dB	3dB	3dB	3dB
Max. output level	110dBμV	100dBμV	110dBμV	110dBμV	110dBμV
Impedance	75Ω	75Ω	75Ω	75Ω	75Ω
Connector	F-connectors		F-connectors	F-connectors	F-connectors
Power supply	DC 12V, AC 110V	Power Supply 1: AC/DC adapter(DC 12V/50mA) Power Supply 2: DTV set-top box(DC 5V/40mA)	DC 12V, AC 110V	DC 12V, AC 110V	DC 12V, AC 110V
Dimensions	19" x 3"	12" x 13"	15" x 3"	8" x 4"	8" x 4"

Marine TV Antenna Accessories

SeaWatch® 4366

Marine TV Antenna Mast Mount

This aluminum mast mount complements SeaWatch® 2030-G marine TV antennas and is supplied with standard 1"-14 thread fitting.



4360

TV & AM/FM Band Separator

The Shakespeare® 4360 is a multi-function distribution amplifier and power supply that will work with all Shakespeare® TV antennas. This device will amplify and distribute off-air TV signals to two TV sets, one additional TV set or DAB receiver, and off-air AM/FM signals to one AM/FM stereo. This unit will also replace the existing power supply that is used with the TV antenna. There is a variable gain control to allow for maximum reception of all received off-air signals.



4365

Straight Mount

4" high, 1"-14 thread stainless steel mount. Perfect for radar arches. May be used with Style 4364 Extension Mast.



TV-1060

Screw-On Type "F" Connector

No soldering or crimping required.
• For RG-59 cable



Classic 4364

12" (30cm) Extension Mast

Our 1-inch diameter extension mast is best suited for light to moderate-duty applications. This one-section extension antenna mast includes white molded polycarbonate male upper and female lower 1"-14 threads, and fits standard antenna mounts. The Classic 4364 is an excellent choice for marine TV antennas.



4710

Flange Mount Stainless Steel

Heavy-duty, low profile, 1" high mount with standard 1"-14 threads. For GPS, Marine TV, and shorter antennas.



4711

Flange Mount Nylon

Same as style 4710, but made of nylon for moderate-duty applications.





PHASE III™

6420

4' (1.2m) AM/FM Band

This top-of-the-line, high performance AM/FM antenna brings the entertainment to your vessel. Ideal for hardtops, T-tops and radar arches, the tested durability of our fiberglass radomes ensures exceptional quality during tough conditions. The high-gloss finish coordinates with other Phase III™ antennas providing a complete and lasting look of luxury.

- High-glass, non-yellowing polyurethane finish
- Stainless steel mounting sleeve
- Type "N" connector inside mounting sleeve for easy mounting and dismounting for stowage
- Includes 20 RG-62 cable with Motorola type plug installed
- Suggested mount: Shakespeare® Style 4187-HD Ratchet Mount



PHASE III™

6235

8' (2.4m) AM/FM Band

Our master craftsmen take AM/FM reception to new heights with this hand soldered, hand assembled and hand finished AM/FM antenna. The quality build of this 8' antenna ensure high performance and durability. The high-gloss polyurethane finish protects the fiberglass from yellowing under UV rays, providing a lasting look of beauty for years to come.

- High-glass, non-yellowing polyurethane finish
- Stainless steel mounting sleeve
- Type "N" connector inside mounting sleeve for easy mounting and dismounting for stowage
- Includes 20 RG-62 cable with Motorola type plug installed
- Suggested mount: Shakespeare® Style 4187-HD Ratchet Mount





GALAXY®

5420-XT Little Giant™
4' (1.2m) AM/FM Band

Sturdy construction and outstanding performance enables this Little Giant™ to bring the entertainment to your vessel. Built extra rigid and extra tough, this 4' AM/FM antenna is an excellent choice for T-tops, hardtops and other elevated mounting positions. Take pride in the sleek, luxurious look of this Shakespeare® antenna knowing the beauty is meant to last.

- Copper elements for maximum range
- High-gloss, non-yellowing polyurethane finish
- Stainless steel ferrule with standard 1"-14 thread
- Includes 12' RG-62 cable with Motorola type plug installed
- Suggested mount: Style 4187 or 5187



GALAXY®

5421-XT Little Giant™
4' (1.2m) AM/FM Band

Same as the 5420-XT with an exclusive black Galaxy® finish.

- Copper elements for maximum range
- Stainless steel ferrule with standard 1"-14 thread
- Includes 12' RG-62 cable with Motorola type plug installed
- Suggested mount: Style 4187 or 5187



TV/AM/FM and
SiriusXM ANTENNAS



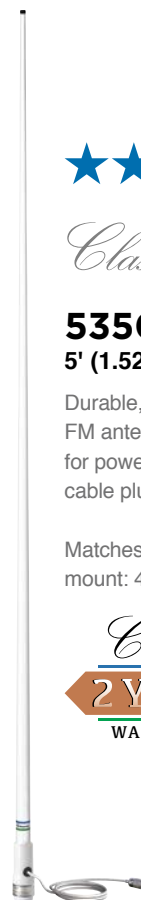
Classic



5350-N
5' (1.52m) AM/FM Antenna

Durable, smooth gloss finished, white fiberglass AM/FM antenna. Good performing AM/FM antenna, ideal for power and work boats. Includes 4.6m RG-62 cable plus Motorola plug attached.

Matches 427-N (RV120P) VHF antenna. Suggested mount: 4186



NOTE: Shakespeare® does not recommend cable runs longer than 25' with AM/FM antenna systems.



Classic

5120 8' (2.4m) AM/FM Band

When far from your favorite stations, the high-end features of this AM/FM antenna help bring them in without breaking the bank. The Centennial® 5120 provides the range and efficiency needed to deliver AM/FM signals loud and clear. The durability and stability of this 8' antenna, along with the high-gloss finish, are signature Shakespeare® benefits boaters trust.

- Chrome-plated brass ferrule with standard 1"-14 thread
- Includes 15' RG-62 cable and Motorola type connector
- Suggested mount: Style 4187 or 5187 Ratchet Mount



Includes cable and connector. Motorola type plug is factory installed. Compatible with boat/car stereos.

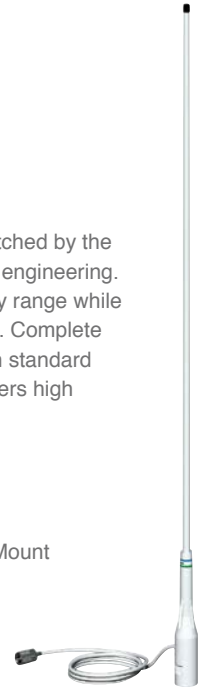


Classic

4351 3' (0.9m) AM/FM Band

The value of this 3' AM/FM antenna is matched by the features of Shakespeare's innovation and engineering. Brass and copper elements provide quality range while sealed inside a durable fiberglass radome. Complete with 1"-14 thread nylon ferrule for use with standard marine mounts, this Classic antenna delivers high performance to your vessel.

- Includes 10' RG-62 coax with Motorola type plug
- One section, 39" overall length
- Suggested mount: Style 4186 Ratchet Mount



5120-S Same as 5120 but with stainless steel ferrule



4352 AM/FM Stereo 10' Extension Cable Kit

This Classic extension cable kit includes 93-ohm RG-62 cable with male and female Motorola type plugs installed.



Classic

4353 24" (0.6m) On-Glass AM/FM Antenna

This innovative design provides flexibility when choosing the best location of an AM/FM antenna on your boat. The Classic 4353 is a 24" clear tape with embedded antenna elements. A permanent adhesive strip enables quick and easy attachment onto your boat's windshield or any smooth, non-metallic surface. This Shakespeare® antenna includes a 6' cable and attached Motorola type plug.



4357-S AM/FM/VHF Marine Band Separator

Designed with you in mind, Shakespeare® engineers developed this AM/FM/VHF band separator to simply your marine electronics needs. The Classic 4357-S eliminates the need for separate AM/FM and VHF antennas, enabling boaters to operate AM/FM and VHF radios simultaneously and removing any interference of VHF radio performance. This Classic antenna is complete with 10' RG-62 AM/FM cable, 3' RG-58 VHF cable and connectors.



★★ (Short Range)

Classic

4354
2' (0.61m) AM/FM Antenna

Black, stainless steel AM/FM antenna. Designed to avoid snagging and excessive whip action, ideal for RIBs and high speed craft.

Matches YRR (VHF)
Integral black bracket with mounting holes. 8m of RG-58 cable with Motorola type connector.



★★★

Classic

4356
3' (0.9m) AM/FM Antenna

Compact, lightweight, stainless steel whip AM/FM antenna. Ideal for small power boats. Sealed, tin-plated copper wire coil. 4.5m of RG-62 cable plus Motorola type connector plug included. Requires a mount with center hole for cable. Suggested mounts: 4187, 5187, 4188-S, 4190



★★ (Short Range)

Classic

YRR-AM/FM
2' (0.61m) AM/FM Antenna
Same as 4354



★★★

Classic

4355
3' (0.9m) AM/FM Antenna

Stainless steel whip AM/FM antenna for sail boats. Lightweight and low profile with removable whip. SO-239 (UHF) connector in base. 4.5m cable hank, terminated with PL-259 and Motorola plug. Sealed, tin-plated copper wire coil. Stainless steel "L" bracket supplied for mast mounting or use. Optional 4716 or 4717 mast head mounts.



TV/AM/FM and
SiriusXM ANTENNAS

Why 2 Stars?
Although all Shakespeare antennas are made with the highest quality standards, those rated as two stars reflect a decrease in range as compared to other Classic series antennas.





GALAXY®



US Only

NEW SRA-50

Using the latest Satellite Radio technology, this SiriusXM® Approved antenna meets the most recent specifications set forth by SiriusXM®. This antenna is compatible with all radios and docks that work on the Sirius and XM networks with push on style, single input SMB connector. This antenna can be mounted on almost every possible surface with 4 different mounting options:

- Flush mount
- Surface mount
- 1" 14 thread mount
- Pedestal mount



Features:

- Sleek ultra low-profile design
- 4-way mounting system
- White UV-stabilized housing
- Flush Mounting
- SiriusXM approved accessory
- Warranty

Benefits:

- Looks good on a boat, vehicle or home
- Flexibility to choose from 4 ways to mount your SRA-50
- A beautiful white that's resistant to discoloring
- Latest requirements for radios and docks on the Sirius and XM networks
- Two year limited warranty



GALAXY®
5 YEAR
WARRANTY

GALAXY®

Satellite Antenna Accessories

For longer cables, select the appropriate length Shakespeare® SRC Series cable kit. Connectors are preinstalled on all cables. These cable kits must be run as a single piece and cannot be joined together.

SRS-3-KIT: Use this splitter kit to connect two SIRIUS Satellite radio receivers to one Galaxy® SRA-40 or SRA-25. Includes three 25' cables which permits up to a 50' cable run from the antenna to each receiver.

SRC-35: 35' of marine-grade RG-58
SRC-50: 50' of marine-grade RG-58
SRC-90: 90' of marine-grade RG-8/X



Receiver and satellite radio service subscription required, available separately. For more information on the services visit www.siriusxm.com.



CB/LORAN Antennas

Shakespeare[®]
MARINE - RULE THE WAVES



CB/LORAN ANTENNAS

CB/LORAN Antennas

Shakespeare® CB (Citizens Band) and Loran-DGPS (Long Range Navigation – Differential Global Positioning System) antennas are recommended by most equipment manufacturers as our products comply with the specifications for these applications and have a proven track record of withstanding harsh marine conditions.



CB/LORAN ANTENNAS



GALAXY®

5223-XT

8' (2.4m) CB Marine Unity Gain

This tunable, easily installed Galaxy® CB antenna delivers top performance in demanding situations. The connector is supplied but not installed, requiring only a 3/8" hole for passage of the cable, while coax length can be altered to the preferred size. Confidently communicate over your CB radio with this master crafted Shakespeare® antenna.

- High-gloss, non-yellowing polyurethane finish
- Stainless steel ferrule with standard 1"-14 thread
- Includes 20' RG-8/X cable, which can be cut to size, plus a PL-259 connector
- Suggested mount: Shakespeare® Style 4187 or 5187 Ratchet Mount, or use a 410-R Mounting Kit and a 5228 Extension Mast to form a 16' antenna system
- Twin to: Galaxy® Style 5225-XT VHF

Max. Power Input: 25 watts

SWR: 1.5:1 or less at Channel 19

Bandwidth: 440 kHz within

2.0:1 VSWR

Frequency: 27 MHz Citizens Band



Classic

176-1 Marine Big Stick™

18' (5.5m) CB Marine 7.65dB Gain

For work boat and large yacht installation, this Big Stick™ CB antenna provides maximum performance and durability for long distance communication over your CB radio. The pristine white, high-gloss finish of this 18' antenna signifies the hand craftsmanship and lasting beauty of a genuine Shakespeare® product.

- Chrome-plated brass ferrules with 1"-14 thread
- SO-239 connector on the side of the ferrule
- Suggested mount: Style 409-R or 410-R Mounting Kit
- Two sections: Base 120", Tip 96"

Max. Power Input: 300 watts

SWR Nominally: 1.5:1 or less at Channel 19

Frequency: 27 MHz Citizens Band

DC Grounding: Yes



Support bracket should be mounted 3'-5' from base on 18' antennas.





Classic

4208 Navigator™ 8' (2.4m) Loran C

Never lose your way with this popular Loran C antenna. Virtually all Loran manufactures recommend the Navigator™ which possesses the same electrical specs as the famous Shakespeare® Classic 10-3.

- Chrome-plated brass ferrule with standard Loran C 3/8"-24 thread
- Loran coupler not included



Classic

4050-B Little Giant™ 3' (0.9m) CB Marine Unity Gain

Our compact Classic CB antenna is complete with a built-in Lift-n-Lay mount. This Little Giant™ is great for bass and other boats where fishing over a 3' antenna is more desirable than greater range. Durability and performance are enhanced by the permanently sealed coil inside pristine white, Shakespeare® fiberglass.

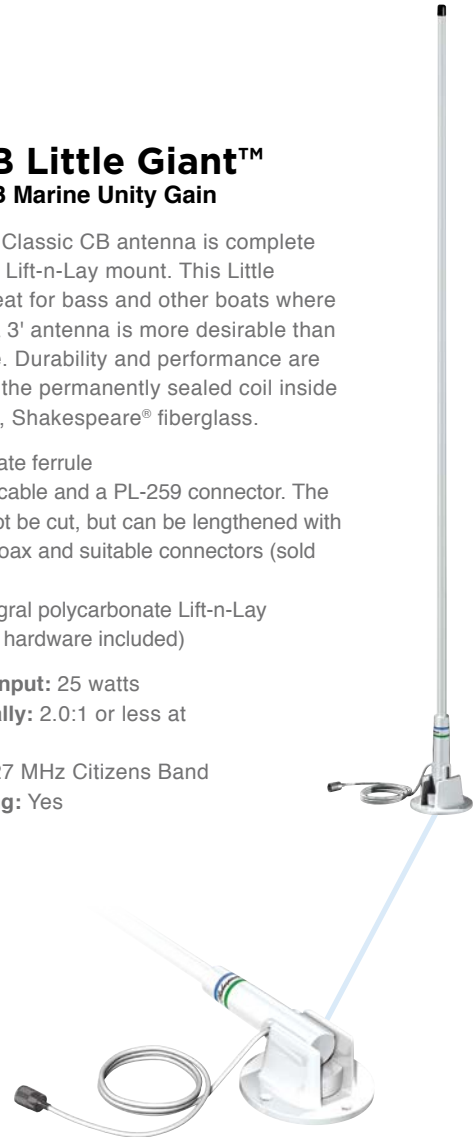
- Polycarbonate ferrule
- Includes 7' cable and a PL-259 connector. The cable cannot be cut, but can be lengthened with extension coax and suitable connectors (sold separately).
- Mount: Integral polycarbonate Lift-n-Lay (installation hardware included)

Max. Power Input: 25 watts

SWR Nominally: 2.0:1 or less at Channel 19

Frequency: 27 MHz Citizens Band

DC Grounding: Yes



Lift-n-Lay mount can also be locked in a right-angled position.

CB/LORAN ANTENNAS





EXTENSION MASTS

Extension Masts

Shakespeare[®]
MARINE - RULE THE WAVES



EXTENSION MASTS

Extension Masts

Shakespeare® offers a full line of Extension Masts to make our antennas fit your mast plan. Use our Extension Mast to improve the range of your radio communication, or to raise the placement of the antenna to avoid on-board obstructions.



GALAXY®

5228 8' (2.4m) Extension Mast

This 1 1/2" diameter Galaxy® extension mast can be used to increase the height of an antenna and thus improve effective range, or to boost placement of an antenna above on-board obstructions. The 8' mast is constructed with high-quality, pristine white Shakespeare® fiberglass and hand finished to match Galaxy® antennas.

- Stainless steel upper and lower ferrules with standard 1"-14 thread
- High-gloss, non-yellowing polyurethane finish
- Mount: A Style 409-R or 410-R Mounting Kit is required (each sold separately)
- Actual length: 95"



GALAXY®

5228-4 4' (1.2m) Extension Mast

Same as the Galaxy® 5228, but 4' length (nominal).

- Mount: Shakespeare® Style 409-R or 410-R Mounting Kit (each sold separately)
- Actual length: 44"



GALAXY®

5228-2 2' (61cm) Extension Mast

Same as the Galaxy® 5228, but 2' length and 1" diameter. Best used for light to moderate applications such as GPS or TV antennas to clear on-board obstructions.

- Suggested mount: Shakespeare® Style 4187 or 5187 Ratchet Mount (each sold separately)
- Actual length: 24"



GALAXY®

5228-1 1' (30cm) Extension Mast

Same as the Galaxy® 5228-2, but 1' length with a 1" diameter. Best used for light to moderate applications such as GPS and TV antennas.

- Suggested mount: Shakespeare® Style 4187 or 5187 Ratchet Mount (each sold separately)
- Actual length: 12"



Classic

4700
Heavy-duty Extension Masts

Excellent for clearing obstructions, this series of heavy-duty stainless steel extension masts are complete with standard 1"-14 thread male and female fittings.

4700-2
Extension Mast

• Actual length: 24"



4700-1
Extension Mast

• Actual length: 12"



4700
Extension Mast

• Actual length: 6"



Classic

4008-4
4' (1.2m) Extension Mast

This sturdy, lightweight, 1½" diameter extension mast is manufactured of structurally strong fiberglass. The mast is best when use with a Shakespeare® Style 409-R or 410-R Mounting Kit (sold separately), and is hollow to ensure easy passage of your antenna's cable.

- Chrome-plated brass ferrules, upper male, lower female
- Standard 1"-14 thread
- Actual length: 50"



4008
8' (2.4m) Extension Mast

Same as Style 4008-4, but longer.
• Actual length: 91"



Classic

4364-B
12" (30cm) Extension Mast

Our 1-inch diameter extension mast is best suited for light to moderate-duty applications. This one-section extension antenna mast includes white molded polycarbonate male upper and female lower 1"-14 threads, and fits standard antenna mounts. The Classic 4364-B is an excellent choice for marine TV antennas.



EXTENSION MASTS





Mounts and Hardware

No antenna installation is complete without the right mount, and we have a wide range of styles and designs to ensure that your antenna installation is optimized. For the best performance, aesthetics, functionality and durability, make sure to pair your antenna with a Shakespeare[®] mount.



Mounts and Hardware

Ratchet Mounts



4186 Ratchet Mount Solid Nylon

Four-way ratchet design with handle, for deck or side mounting. Not for use with antennas longer than 8' in self-supporting mode - this nullifies all warranties. Standard 1"-14 thread.

- Bolt holes: 9/32" dia., 3" x 1 1/2" on center

QuickConnect™ QCM-N

Same as 4186-BP with 15' of RG-58 attached. Can only be used with Shakespeare® QuickConnect® antennas.



4187 Ratchet Mount Stainless Steel

Versatile four-way ratchet design for deck or side mounting. Quick-action handle makes operation easy. Standard 1"-14 thread.

- Slot for cable feed-through
- Bolt holes: 9/32" dia., 3" x 1 1/2" on center



4187-HD Extra Heavy-Duty Ratchet Mount Stainless Steel

Same as Style 4187 with extra strength and rigidity. Use wherever its extra heavy-duty construction is needed. Standard 1"-14 thread.

- Slot for cable feed-through
- Bolt holes: 9/32" dia., 3" x 1 1/2" on center

QuickConnect™ QCM-S

Same as 4187 with 15' of RG-58 attached. Can only be used with Shakespeare® QuickConnect® antennas.



5187 Ratchet Mount Stainless Steel

Sleek simple lines come from a nutless, boltless, design. Standard 1"-14 threads and a special cable slot that eliminates removal of most factory installed connectors when installing the antenna.

- Five-degree teeth for finer adjustments than standard ratchet mounts
- Slot for cable feed-through
- Bolt holes: 9/32" dia., 3" x 1 1/2" on center
- U.S. Patent 7,525,507

Rail Mounts



4188-SL Ratchet Rail Mount Stainless Steel

Ratchet action, fast release design for quick and easy laydown. Mounts easily on 7/8" 1", and 1 1/2" vertical or horizontal rails. Standard 1" 14 thread.

- Slot for cable feed-through
- Handles antennas up to 8'

QuickConnect™ QCM-SR

Same as 4188-SL with 15' of RG-58 attached. Can only be used with Shakespeare® QuickConnect™ antennas.



4190 Rail Mount Stainless Steel

Ratchet action, designed for quick and easy installation on 7/8" and 1" vertical or horizontal rails. Standard 1"-14 thread.

- Slot for cable feed-through
- Handles antennas up to 8'



4721 Economy Ratchet Rail Mount Nylon

Attaches to 7/8" and 1" vertical, horizontal, and angled rails. Lever action makes lowering antenna quick and easy. Has a hole for coaxial cable pass-through. Standard 1"-14 thread.

QuickConnect™ QCM-NR

Same as 4721 with 15' of RG-58 attached. Can only be used with Shakespeare® QuickConnect® antennas.



4722 Rail Mount

This sturdy plastic mount attaches to 7/8" and 1" horizontal rails and has a side slot in the 1"-14 thread section for antennas with coax exiting the bottom center of their ferrule.



4720 Economy Rail Mount Stainless Steel

Mount comes with nylon adapters to fit 7/8", 1" and 1 1/4" vertical or horizontal, square or round rails. For use with standard 1"-14 thread antennas. Can also be mounted to flat surfaces.



Cable Slot

Special Cable Slot that eliminates removal of most factory installed connectors!

Flange Mounts



4710 Flange Mount Stainless Steel

Heavy-duty, low profile, 1" high mount with standard 1"-14 threads. For GPS, Marine TV, and shorter antennas.



4365 Straight Mount Stainless Steel

4" high, 1"-14 thread stainless steel mount. Perfect for radar arches.



4711 Flange Mount Nylon

Same as style 4710, but made of nylon for moderate-duty applications.



495-B Lift-n-Lay Mount White Polycarbonate

This innovative mount enables your antenna to Lift-n-Lay with a positive snap action. Leveling plate provided for mounting to a sloping deck. Standard 1"-14 thread. Insert included to accommodate 3/8"-24 thread antennas.

- Has 3/8"-24 thread brass insert
- Handles antennas up to 8'

Mast Mounts



4715 Mounting Clamps

Attaches an antenna of 1" to 2" diameter to a mast of 1" to 2" in diameter. Two clamps per set.

- Pliable rubber pad cushions the antenna
- Sturdy construction



MXG100 Mounting Plate



Galvanized steel mounting plate with 2 sets of U-Bolts and nuts. Plate size: 100mm X 100mm



483 Mast Clamp Kit

Mast Clamps kit for Shakespeare® Style 476 antenna

- Galvanized metal construction



MDM70-11 Mast or Rail Mount



Mast or rail mount. Heavy duty aluminium bracket for 1" - 11 TPI. Stainless steel U-bolts included



MDM70-14 Mast or Rail Mount



Mast or rail mount. Heavy duty aluminium bracket for 1" - 14 TPI. Stainless steel U-bolts included

Mount Kits



407 **Heavy-Duty Swivel Mount** **Chrome-plated Brass**

Versatile four-way action. Fits almost any mounting location and permits antenna laydown in desired direction. For deck or side mounting when used with a stand-off bracket (sold separately). Standard 1"-14 thread.

- Bolt holes: 9/32" dia., 3" x 1 1/4" on center



409-R **Mounting Kit**

Combines the versatile Style 407 heavy-duty Swivel Mount with the Shakespeare® Style 408-R Insulated Stand-off Bracket. The bracket features an insert to accept 1", 1 1/8", or 1 1/2" diameter antennas or extension masts.

- Swivel mount is chrome-plated brass construction



81-S **Swivel Mount** **Stainless Steel**

For deck or side mounting when used with an upper support bracket (sold separately). Base is dual jointed, free-pivoting, and allows easy lowering of antenna for clearing overhead obstructions. Standard 1"-14 thread.



410-R **Mounting Kit**

Combines the Style 81-S Swivel Mount with the Shakespeare® Style 408-R molded upper bracket. The bracket features an insert to accept 1", 1 1/8", or 1 1/2" diameter antennas or extension masts.

- Swivel mount is stainless steel construction



484 **Wall Bracket Kit**

Wall brackets kit for Shakespeare® Style 476 antenna

- Galvanized metal construction



408-R **Upper Bracket** **White Molded Plastic**

Insulated stand-off bracket of white molded plastic. Corrosion resistant. Easy-open for quick laydown. For use with Styles 81-S and 407 Swivel Mounts and antennas of 1", 1 1/8" and 1 1/2" diameter (each sold separately).



4191 **Stand-Off Extension** **Stainless Steel**

Use with 408-R, 409-R or 410-R to clear overhang or other obstacles.

- Adjustable length: 3" to 8"

Tech Tips

For tech tips and installation FAQ's, visit www.shakespeare-marine.com

Unless specified, mounting hardware not included. For connectors and adapters, see pages 72-73.

Mount Accessories



414 Heavy-Duty Rubber Shim Kit for Ratchet Mounts

Kit of four shims, two each with front/back and side/side slope. Each shim adds a half-notch (5°) tilt. Stack them for extra height or for compound angles. For all Shakespeare® ratchet type deck mounts.



418 Round Shim Kit

Set of two durable yet flexible rubber shims for Shakespeare® styles 4710, 4711 and 4365 round flange mounts.

4006 Double Female Ferrule Stainless Steel

4 1/2" ferrule with 1"-14 female threads at both ends.



ADAPT3

Adapts SO-239 (UHF) male to 1" x 14 TPI female thread (chrome plated brass) - (converts 5215 & 5247 to 1" x 14 TPI)



ADAPT1

Adapts M16 male to 1"x14 TPI female thread (converts YRR, YWX, YHK to 1"x14 TPI)



ADAPT4

Adapts M16 male to 1" x 14 TPI female thread (converts YRR, YWX, YHK to 1" x 14 TPI)

ADAPT2

Adapts 1"x14 TPI female to M16 male thread



ADAPT7

Adapts 1"x14 TPI male to 1"x11 BSP female thread



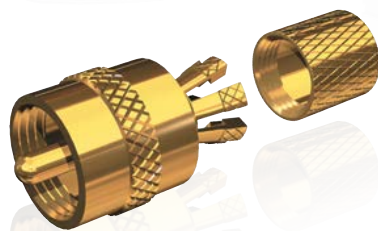


MOUNTS & HARDWARE

Accessories

Shakespeare[®]

MARINE - RULE THE WAVES



We offer a complete range of high quality accessories for your on-board antenna system. Whether you need a replacement whip, cable, connector, switch, speaker or antenna tester, you can trust that our accessories are designed to make your installation smooth, effective and reliable.

REPLACEMENT WHIPS

4171

Replacement tip for 390 antenna

4202

Replacement tip for 5230 antenna

4204

Replacement tip for 4018 antenna

4239

Replacement tip for 5300 antenna

4318

Replacement tip for Style 5018 and 5309-R antennas

4319

Replacement tip for Style 5390 and 5310-R antennas

4324

Replacement tip for Styles all 5215 Series, all 5250 Series antennas

4325

Replacement Stainless Steel whip for Style 5241-R antenna

4327

Replacement Stainless Steel whip for Style 5242-A antenna

4369

Replacement Stainless Steel whip for Style 5247-A antenna

4088

Replacement tip for 399-1, 399-1-M and 5399 antennas

YRA

Replacement tip for YRR (Raider) Antenna Only



YHA

Replacement tip for YHK (Hawk) Antenna



YWA

Replacement tip for Whipflex Antenna



CONNECTORS AND ADAPTORS



PL-258-G

Barrel connector for PL-259-ended cables



NM-8X-G

Male "N" connector for RG-8/X coax



PL-258-L-G

Bulkhead mountable barrel connector for PL-259-ended cables



NM-8-213-G

Male N connector for RG-8U and RG-213 coax



PL-259-G

PL-259 connector for RG-8/AU and RG-213 coax



TV-1060

Screw-on F type connector for RG-59 cable. Gold plated. Two per pack.



PL-259-8X-G

PL259 connector with UG176 adapter and DooDad® for RG-8/X coax



ACC140

N-Type Plug for RG-58 Cable



PL-259-58-G

PL-259 connector with UG175 adapter and DooDad® for RG-58 coax



ACC142

N-Type Jack for RG-58 Cable



RA-259-239-G

Right-angle PL-259 to SO-239 adapter



ACC155

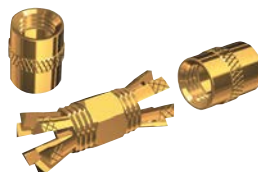
Connector Jack, BNC for RG58



Centerpin PL-259-CP-G

For RG-58 A/U and RG-8/X coaxial cable. Installing a PL-259 connector hasn't been simple. Now it is.

Also in this series: PL-259-CPB-G (Bulk Pack)



Centerpin PL-258-CP-G

The Centerpin® PL-258-CP-G connector puts Centerpin convenience to work on the double-trouble task of splicing RG-58 A/U and RG-8/X coaxial cables.

Also in this series: PL-258-CPB-G (Bulk Pack)

Centerpin® is a registered trademark of Centerpin Technology, Inc.

CONNECTORS AND ADAPTORS (continued)



ACC105

For Coaxial Cable With N-Type Connectors Deck plug and socket for RG-58 coaxial cable with N-Type connectors.



ACC106

For Coaxial Cable With N-Type Connectors Deck plug and socket for RG-213 cable with N-Type connectors.



ACC158

Solderless Connector Termination Kit As supplied with Hawk, Whipflex and Raider antennas.

COAXIAL CABLES AND ACCESSORIES

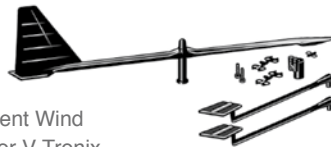
4078-50 RG-8X Cable

50' RG-8X 50-ohm low loss coax cable, white



YHI

Replacement Wind Indicator for V-Tronix Hawk antenna



RG58

100m reel of RG-58 50 Ohm coaxial cable



4079 RG-58 Cable

A 1-meter RG-58 cable with PL-259 connectors for ART-2, CS-2, AS-2



ACC108

Thru Deck Gland for RG-58 and RG-213 cables complete with stainless steel screws



RG213

50m reel of 50 Ohm coaxial cable



4184

Chrome-plated Cable Outlet

Shakespeare® offers an extensive line of marine grade connectors and adaptors for antenna installations.



- Provides a neat, water resistant installation
- Use this attractive, chromed brass, cable outlet to neatly pass cables through bulkheads. Its rubber internal grommet grips the cable and keeps water out. For RG-8/AU, 8X, 58, 59, 213 and coax cables.



ACC135

UHF Deck Connector for RG-58 or RG-213 cable complete with rubber gasket and protection caps



YCP20

RG58 Coax Cable (20m)



YBR

Right Angle Bracket Mount



TESTERS & SWITCHES

ART-3

Antenna Radio Tester

No need to call for a radio check when you have this compact, easy to use unit on-board. Unlike other meters in its class, the ART-3 tests receiver function as well as output power and VSWR (antenna efficiency). It is powered by an internal battery or can be connected to ship's 12 vDC with the supplied power cable. Battery level can be checked at the flip of a switch. No serious boater should be without an ART-3.

Frequency Range: 155-158 MHz
 RF Power Scale: 0 to 30 watts
 Impedance: 50 ohms
 Accuracy: $\pm 10\%$
 Connectors: SO-239
 Construction: Die-cast aluminum
 Signal Generator: 3 KHz Deviation
 Tone: 1000 KHz
 RF Level: -115 dBm (approx.)

Requires Style 4079 Cable
 (sold separately)



AS-2

Automatic Switch

This automatic switch toggles two radios to one antenna. When you key the microphone on one of the radios, it switches the antenna to it... automatically. The radio stays locked onto the antenna until the automatic switch detects a transmit from the other radio.

(Does not allow simultaneous reception. Only one radio at a time is connected to the antenna.)

Frequency Range: Up to 600 MHz
 Power Rating: 30 watts
 Impedance: 50 ohms
 Connections: SO-239 type
 Construction: Cast aluminum case
 VSWR: Below 1.2:1
 Power Supply: 12 vDC @ 200 ma
 Sensing/Switching Time: Less than 100 ms
 Insertion Loss: Less than 1.2dB
 Isolation: Better than 50dB



SPEAKERS

Most VHF radios provide external audio outputs. These accessory speakers are color and performance matched to make installation a breeze.

HS-40

PA/Hailer Horn Speaker

Gets your point across with up to 40 watts power handling capacity and also supports loudhailer listen-back function. It is made of high impact white plastic and includes a tilt mount bracket. Measures 7" wide x 13" deep.

- 8 ohms, 40 Watts @ 400 Hz
- Frequency Response: 250 Hz to 8 KHz
- Operating temperature range: -40 to +176 degrees F (-40 to +80 C)



ES-2

External Speaker

A 2 1/4" external speaker with Mylar® cone in a compact white housing to withstand the rigors of the marine environment. A 4 ohm speaker for input power up to 5 watts (RMS). Comes with a ratchet-action mounting bracket, hardware mounting kit and 6' of cable with "mini phone" plug installed.



HS-5

Horn Speaker

Shakespeare's external Hailer Speaker is a 5", white plastic horn speaker of 4 ohms, handling 15 watts (RMS) input.



ES-4

External Speaker

A 4", 4 ohm, deluxe speaker with Mylar® cone and white plastic cabinet for protection against moisture. Maximum input power is 8 watts (RMS). Comes with swivel mounting bracket, hardware mounting kit and 6' of cable with "mini phone" plug installed.



Power Supplies

PowerVerter Common Earth Voltage Power Converters

- Cool running
- Power conversion efficiency typically 93 percent
- Low-mass, Surface Mount Technology components for small size and resistance to vibration
- Tamper proof, marine grade aluminum case sealed with nylon caps
- Low off load current - less than 10mA
- Quick fit installation clip, fixed in three points to allow mounting on uneven surfaces
- True power conversion, not just a voltage dropper



Europe Only

PV3s



Europe Only

PV3i



Europe Only

PV6s



Europe Only

PV6i



Europe Only

PV12s



Europe Only

PV12i





“Twenty years from now you will be more disappointed by the things that you didn’t do than by the ones you did do. So throw off the bowlines. Sail away from the safe harbor. Catch the trade winds in your sails. Explore. Dream. Discover.”

— Mark Twain



Shakespeare[®]

Celebrating over 100 years of innovation, Shakespeare[®] is the dominant force worldwide in marine antennas, and a world leader in military and commercial antenna technology, including land and emergency systems antennas.

Shakespeare[®] Headquarters
6111 Shakespeare[®] Rd.
Columbia SC 29223
Tel: +1-803-227-1590
www.Shakespeare-marine.com

Shakespeare[®] European Operations
Enterprise Way, Fleetwood, Lancashire,
FY7 8RY, England
Tel: +44 (0) 1253-858787
www.vtronix-antennas.com

Shakespeare[®] Military
6111 Shakespeare[®] Rd.
Columbia SC 29223
Tel: +1-800-845-7750 ext.3121
www.Shakespeare-military.com