

SEASTAR JACKPLATE

new high speed
hydraulic actuator

maximum
engine tilt

Superior
sealing system

Built and
prepared for the
toughest
environment

Heavy duty
equipment

exceptional
load capacity

tough and sleek

2" setback
increments

FOR SERIOUS COMPETITORS



SEASTAR^{HD}

JACKPLATE

The SeaStar HD Jackplates utilize high strength materials to be able to handle some of the strongest engines on the water.

The heavy duty frames are capable of handling four stroke engines rated to 350 HP. Designed with speed and durability in mind the HD Jackplate can adjust the engine height by 5.8" in just 8.5 seconds, even while the boat is moving at full power.



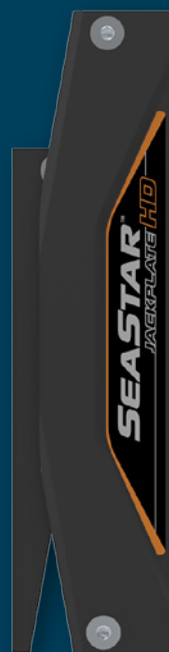
FEATURES

- HD Jackplate is using high strength materials and is easily capable of handling 350 horse power four stroke engines.
- Rapid hydraulic response in 8.5 seconds.
- Complete rigid engine support at full thrust.
- Easily moves engine at full thrust.
- Comes in 4" (JP4040HD) and 6" (JP4060HD) setbacks.
- JP4060HD compatible with Power Pole® and Talon®.

NOTE: JP4060HD requires an adapter kit DK4600 for anchoring system. Power Pole® and Talon® anchor systems compatible on JP4060HD only.

SeaStar HD Jackplate Setbacks

4" Setback



6" Setback



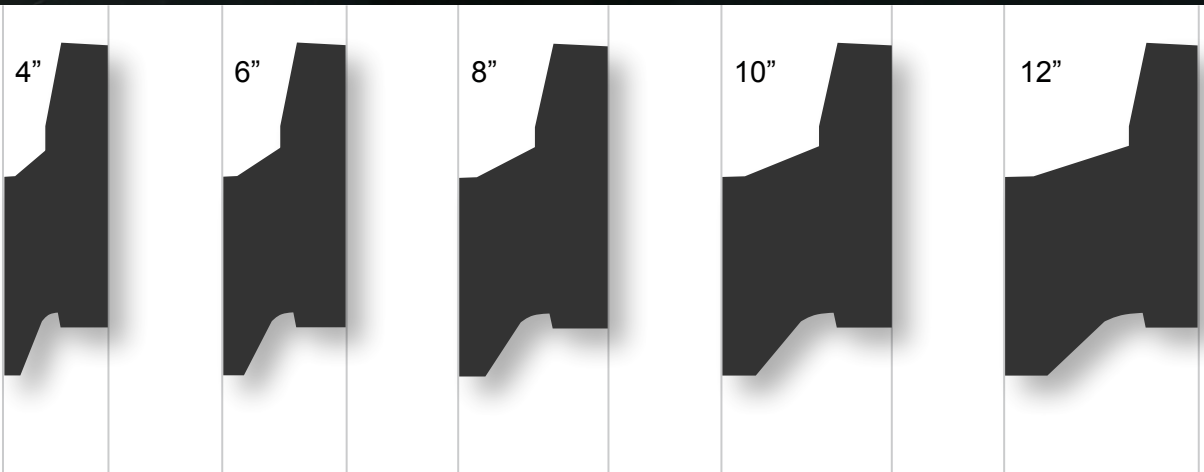


SEASTAR JACKPLATE

The SeaStar Jackplate is one of the sleekest and most durable engine Jackplates available. This essential performance accessory allows for higher speed, gains in fuel economy and the ability to run in shallow water. The all new SeaStar Jackplate features sleek, bold styling that is redefining the look for Jackplates.

- Sleek, bold styling – redefining the look for Jackplates.
- Presenting a full range of plates in 4, 6, 8, 10 & 12 inch setbacks.
- Aesthetically matched to SeaStar steering cylinders.
- New high speed hydraulic actuator. Bottom to top, 5.8" in under 8.5 seconds.
- High output integrated actuator to lift and lower engines in all conditions.
- Rated for 300hp engines up to 625 pounds dry weight.
- Environmentally sealed non-contact SmartStick position sensor kit available for precise height information.
- Complete rigid engine support at full thrust.
- Easily moves engine at full thrust.
- Designed to maximize engine tilt with SeaStar steering cylinders.
- High visibility lift scale for quick glance operation.
- Integrated circuit breaker gives electrical protection right at the battery post.
- All hydraulic Jackplates come with basic rocker switch DK4020.

SeaStar Jackplate Setbacks





SEASTAR *Manual* JACKPLATE

The JP1000 Series Jackplate comes in 4", 6", 8", and 10" setbacks to help you find the best match for your boat and optimize performance. 3" of available lift.

- Interlocking slide guides offer enhanced strength while providing smooth, 3" of bind-free travel.
- The lead screw assembly sets the plate height and the Side Locks are used to hold the position.
- The stainless steel lead screw is resistant to corrosion and pre-greased for smooth operation.
- Maximum supported engine weight of 585 lbs is capable of handling the most demanding outboard engines including the latest generation of 4-strokes.

JP1040SS
4" Setback

JP1060SS
6" Setback

JP1080SS
8" Setback

JP1100SS
10" Setback

SeaStar
Manual
Jackplate
Setbacks



SeaStar Jackplate Horsepower Rating

Jackplate Part Number	75HP	115HP	150HP	200HP	250HP	300HP*	350HP
JP4040							
JP4060							
JP4080							
JP4100							
JP4120							
JP4040HD							
JP4060HD							

*SeaStar Hydraulic Jackplates rated to 300HP and 625lbs engine weight.



DK4020
Optional Basic
Rocker Switch

DK4320 Optional Jackplate Gauge Kit

Order Information

Hydraulic Jackplates	Part No.
4" Setback Heavy Duty	JP4040HD**
6" Setback Heavy Duty	JP4060HD*
4" Setback	JP4040**
6" Setback	JP4060*
8" Setback	JP4080
10" Setback	JP4100
12" Setback	JP4120
Manual Jackplates with Side Locks	
4" Setback	JP1040SS
6" Setback	JP1060SS
8" Setback	JP1080SS
10" Setback	JP1100SS
Accessories	
Basic Rocker Switch	DK4020***
Pro-Trim Single Function	PT1000-1P
Pro-Trim Dual Function	PT2000-1P
SmartStick and Gauge Kit	DK4220
Gauge and Harness Kit	DK4320
Accessory Adapter	DK4600

Accessories	
Hole Shot Plate Kit, 6"	HSP4060
Hole Shot Plate Kit, 8"	HSP4080
Hole Shot Plate Kit, 10"	HSP4100
Hole Shot Plate Kit, 12"	HSP4120
Jackplate Relay	DK3010
Jackplate Wire Harness	DK4420
Actuator Kit, 3/8" Mount Bolt, 5/16" socket	DK4710****
Actuator Kit, 7/16" Mount Bolt, 3/8" socket	DK4720*****
SeaStar Stabilizer Clips, (pack of 2)	HYCL-001
Transom Plate, Small, 2" x 15"	18-79987
Transom Plate, Large, 4" x 17"	18-79988

NOTES: * Accessory adapter kit DK4600 is required for installation of Power Pole® or Talon® on JP4060 and JP4060HD.
 ** Cannot mount Power Pole® or Talon® anchoring systems.
 *** Included with Jackplate harness.
 **** Used on Jackplates with serial numbers D4000-00001 to D4000-001843
 ***** Used on Jackplates with serial numbers above D4000-001843 and any Jackplate serial numbers starting with JPXXXX

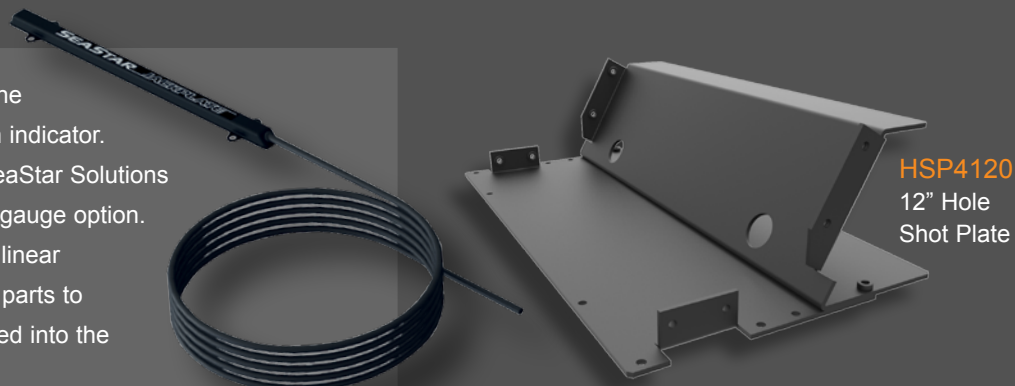
Pro-Trim Engine Trim Control

Trim control the way it's meant to be... at your fingertips. With Pro-Trim from SeaStar Solutions, you can keep both hands on the wheel and concentrate on your driving. Its clean, modern design looks at home in any cockpit and there are no cords to tangle around the steering wheel, a big plus for boats with hydraulic steering!



SeaStar SmartStick

A high-visibility position scale provides the driver with an at-a-glance visual position indicator. For real-time information at the helm, SeaStar Solutions offers a SmartStick position sensor and gauge option. The SmartStick sensor is a non-contact linear position sensor, so there are no moving parts to wear out. All the electronics are integrated into the sensor body, making it fully waterproof.



HSP4120
12" Hole Shot Plate



©2015 SeaStar Solutions All Rights Reserved.
 Document: SeaStar Jackplates - 2015. Printed in the USA.



Explore



www.seastarsolutions.com