

RV/Marine PRODUCT SHEET

OEM

100-000-21

Aftermarket

100-009-21

TYPICAL APPLICATIONS

Single fixture 12 VDC potable water installations.
Other uses include combinations with electric faucet systems. This pump may be used for general water transfer. For other applications, contact SHURflo.

PUMP

Type	Wobbler Pump
Ports	3/8" Barb
Liquid	130 °F [54 °C] Max
Prime	Flooded Inlet
Inlet PSI	30 PSI [2.1 Bar] Max
Run Dry	No

ELECTRICAL

Motor	12VDC Permanent Magnet, Intermittent Duty Splash-proof Housing
Protection	Thermal Overload, Automatic Restart
Leads	16 AWG, 17" [43 cm] Red +, 17" [43 cm] Black -
Fuse	5 Amp Time Delay Recommended
Control	No Control

MATERIALS

Housing	Ryton
Wobbler	Ryton
Hardware	Stainless Steel

APPROVALS

c-UL

WARRANTY

1 Year Limited Warranty
See SB-1041 & SB-1050 For Full Warranty Details

SHIPPING

Net Weight (Boxed)	1 Lb [0.45Kg] each
Carton Weight	24 each, 24 Lb [10.9 Kg]
Carton Size	14"L x 10"W x 13"H [36cm x 26cm x 33cm]

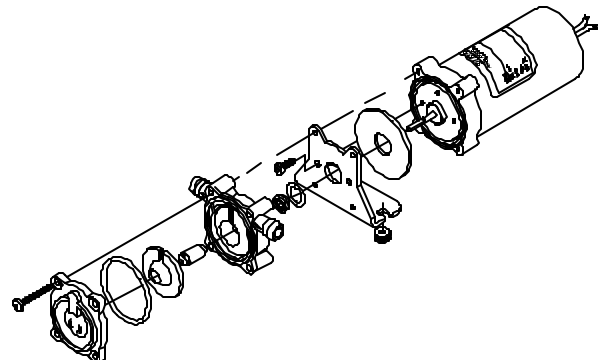
RELATED DOCUMENTS

Catalog	MS-030-083 MS-030-084
Installation Manual	911-420
Maintenance	911-420
Applications Spec Guide	MS-020-005
Warranty	SB-1041/SB-1050

Nautilus

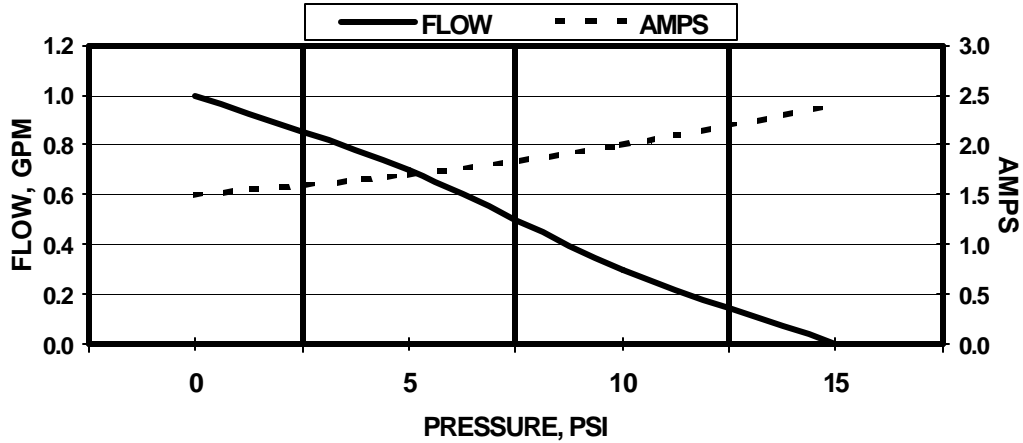


Exploded View--No Parts Kits Available

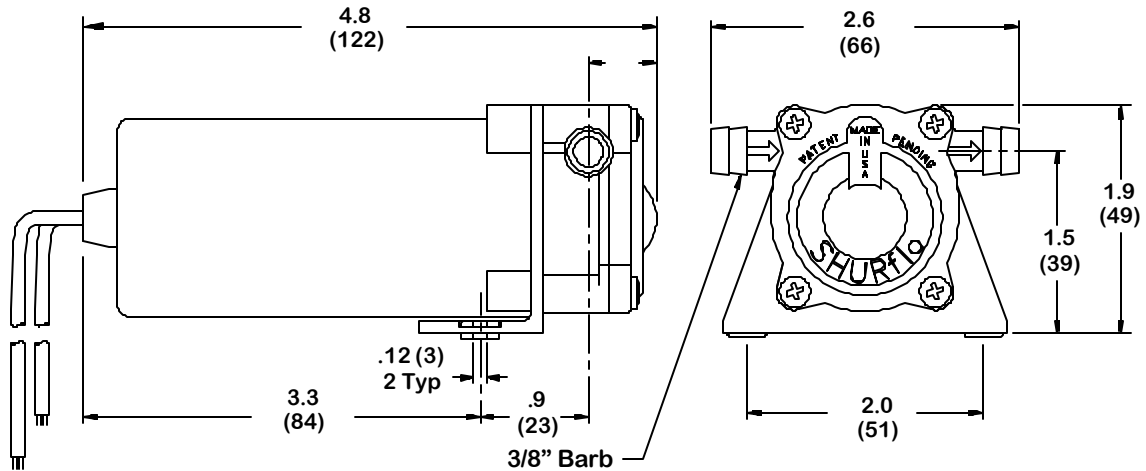


Typical Performance

PRESSURE		FLOW		CURRENT
BAR	PSI	GPM	LPM	AMPS
0.0	0	1.0	3.7	1.5
0.3	5	0.7	2.6	1.7
0.7	10	0.3	1.1	2.0
1.0	15	0	0	2.4



Typical Dimensions



SHURflo reserves the right to update specifications, prices, or make substitutions.

SHURflo, LLC Headquarters
 5900 Katella Avenue
 Cypress, California 90630
 Phone (562) 795-5200 Toll Free (800) 854-3218
 Fax (562) 795-7554

SHURflo, LLC East
 52748 Park Six Court
 Elkhart, Indiana 46514-5427
 Phone (562) 795-5200 Toll Free (800) 854-3218
 Fax (574) 264-2169
 © 2001 SHURflo, LLC All Rights Reserved

SHURflo Europe, Middle East, Africa
Pentair Water Belgium bvba,
 Industriepark Wolfstee, Toekomstlaan 30
 B-2200 Herentals, Belgium
 Phone +32-14-283500 Fax +32-14-283505